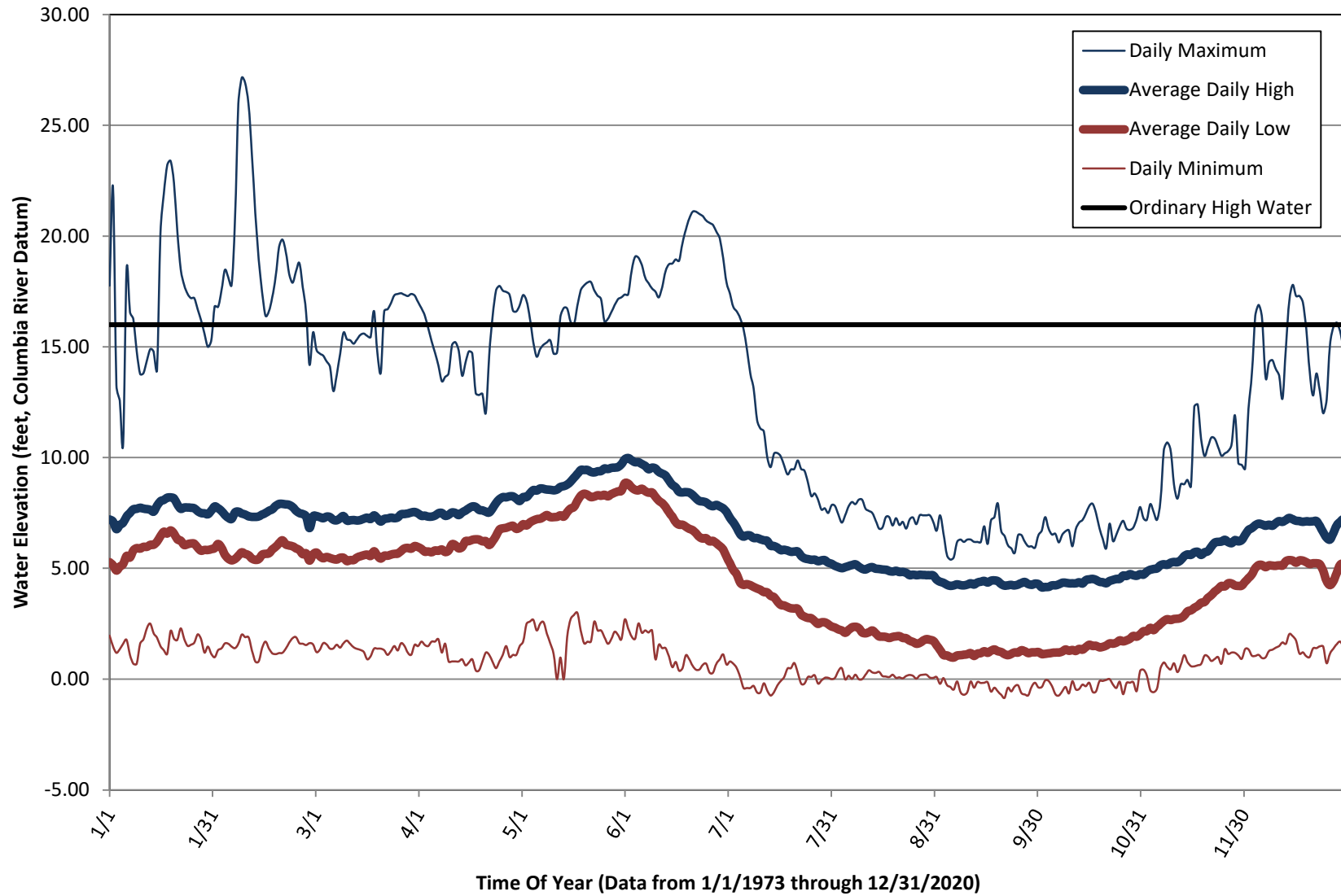


APPENDIX G: COLUMBIA WATER LEVEL

Columbia River Water Elevation at the Interstate Bridges



Note: The water level went above the ordinary high water mark (16' above CRD) less than 1.2% of the time (189 days / 17,113 days) between 1973 and 2020.

Columbia River Water Elevation at the Interstate Bridges, Daily Statistics (feet, Columbia River Datum)

	Daily Maximum	Daily Minimum	Average Daily High	Average Daily Low	Average Monthly Max	Average Monthly Min	Ordinary High Water
1-Jan	17.77	1.97	7.21	5.28	16.98	1.62	16
2-Jan	22.20	1.48	7.12	5.14	16.98	1.62	16
3-Jan	13.27	1.19	6.78	4.91	16.98	1.62	16
4-Jan	12.58	1.36	6.96	5.08	16.98	1.62	16
5-Jan	10.65	1.60	7.06	5.20	16.98	1.62	16
6-Jan	18.48	1.78	7.34	5.57	16.98	1.62	16
7-Jan	16.59	1.10	7.51	5.49	16.98	1.62	16
8-Jan	16.25	0.70	7.67	5.81	16.98	1.62	16
9-Jan	14.80	0.70	7.69	5.91	16.98	1.62	16
10-Jan	13.78	1.60	7.74	5.90	16.98	1.62	16
11-Jan	13.82	1.80	7.70	5.98	16.98	1.62	16
12-Jan	14.38	2.30	7.67	5.97	16.98	1.62	16
13-Jan	14.90	2.51	7.64	6.07	16.98	1.62	16
14-Jan	14.78	2.07	7.57	6.07	16.98	1.62	16
15-Jan	13.97	1.87	7.83	6.21	16.98	1.62	16
16-Jan	20.10	1.50	8.03	6.45	16.98	1.62	16
17-Jan	21.90	1.31	8.09	6.66	16.98	1.62	16
18-Jan	23.20	1.14	8.19	6.57	16.98	1.62	16
19-Jan	23.40	2.18	8.21	6.71	16.98	1.62	16
20-Jan	22.40	1.83	8.16	6.58	16.98	1.62	16
21-Jan	20.20	1.78	7.89	6.32	16.98	1.62	16
22-Jan	18.50	2.30	7.69	6.25	16.98	1.62	16
23-Jan	17.80	1.83	7.75	6.06	16.98	1.62	16
24-Jan	17.40	1.51	7.75	6.10	16.98	1.62	16
25-Jan	17.20	1.55	7.74	6.13	16.98	1.62	16
26-Jan	17.20	1.65	7.71	6.12	16.98	1.62	16
27-Jan	16.70	2.02	7.59	5.94	16.98	1.62	16
28-Jan	16.20	1.81	7.50	5.80	16.98	1.62	16
29-Jan	15.60	1.20	7.49	5.84	16.98	1.62	16
30-Jan	15.00	1.47	7.44	5.83	16.98	1.62	16
31-Jan	15.29	1.14	7.61	5.87	16.98	1.62	16
1-Feb	16.82	0.99	7.80	5.91	19.39	1.46	16
2-Feb	16.80	1.31	7.72	6.10	19.39	1.46	16
3-Feb	17.53	1.39	7.60	5.94	19.39	1.46	16
4-Feb	18.47	1.61	7.42	5.62	19.39	1.46	16
5-Feb	18.15	1.60	7.29	5.44	19.39	1.46	16
6-Feb	17.79	1.47	7.23	5.37	19.39	1.46	16
7-Feb	20.73	1.40	7.53	5.43	19.39	1.46	16
8-Feb	25.98	1.60	7.57	5.58	19.39	1.46	16
9-Feb	27.15	2.01	7.47	5.73	19.39	1.46	16
10-Feb	26.92	1.90	7.43	5.65	19.39	1.46	16
11-Feb	25.96	1.90	7.35	5.60	19.39	1.46	16
12-Feb	23.68	1.30	7.33	5.45	19.39	1.46	16
13-Feb	21.05	0.80	7.33	5.39	19.39	1.46	16
14-Feb	18.97	0.80	7.35	5.42	19.39	1.46	16
15-Feb	17.48	1.40	7.43	5.62	19.39	1.46	16
16-Feb	16.41	1.70	7.50	5.66	19.39	1.46	16
17-Feb	16.60	1.39	7.60	5.68	19.39	1.46	16
18-Feb	17.24	1.17	7.67	5.85	19.39	1.46	16
19-Feb	18.17	1.13	7.82	5.98	19.39	1.46	16
20-Feb	19.50	1.18	7.91	6.13	19.39	1.46	16
21-Feb	19.85	1.19	7.91	6.27	19.39	1.46	16
22-Feb	19.30	1.38	7.90	6.08	19.39	1.46	16
23-Feb	18.30	1.65	7.87	6.04	19.39	1.46	16
24-Feb	17.90	1.85	7.78	6.00	19.39	1.46	16
25-Feb	18.40	1.90	7.61	5.91	19.39	1.46	16
26-Feb	18.79	1.63	7.50	5.83	19.39	1.46	16
27-Feb	17.71	1.60	7.45	5.64	19.39	1.46	16
28-Feb	16.55	1.54	7.35	5.68	19.39	1.46	16
29-Feb	14.19	1.63	6.82	5.35	19.39	1.46	16
1-Mar	15.66	1.57	7.36	5.64	15.66	1.38	16
2-Mar	14.87	1.22	7.36	5.71	15.66	1.38	16

Columbia River Water Elevation at the Interstate Bridges, Daily Statistics (feet, Columbia River Datum), cont'd.

	Daily Maximum	Daily Minimum	Average Daily High	Average Daily Low	Average Monthly Max	Average Monthly Min	Ordinary High Water
3-Mar	14.70	1.33	7.32	5.55	15.66	1.38	16
4-Mar	14.60	1.63	7.26	5.46	15.66	1.38	16
5-Mar	14.35	1.57	7.34	5.51	15.66	1.38	16
6-Mar	14.10	1.38	7.32	5.47	15.66	1.38	16
7-Mar	13.00	1.39	7.19	5.43	15.66	1.38	16
8-Mar	13.75	1.56	7.17	5.40	15.66	1.38	16
9-Mar	14.70	1.42	7.27	5.48	15.66	1.38	16
10-Mar	15.65	1.63	7.36	5.48	15.66	1.38	16
11-Mar	15.35	1.74	7.16	5.33	15.66	1.38	16
12-Mar	15.30	1.59	7.17	5.38	15.66	1.38	16
13-Mar	15.15	1.44	7.19	5.38	15.66	1.38	16
14-Mar	15.35	1.37	7.16	5.50	15.66	1.38	16
15-Mar	15.55	1.32	7.18	5.55	15.66	1.38	16
16-Mar	15.60	1.22	7.25	5.59	15.66	1.38	16
17-Mar	15.50	0.90	7.29	5.62	15.66	1.38	16
18-Mar	15.45	1.04	7.23	5.56	15.66	1.38	16
19-Mar	16.62	1.38	7.39	5.77	15.66	1.38	16
20-Mar	14.70	1.38	7.27	5.57	15.66	1.38	16
21-Mar	13.85	1.38	7.12	5.44	15.66	1.38	16
22-Mar	16.62	1.31	7.24	5.58	15.66	1.38	16
23-Mar	16.70	1.10	7.25	5.57	15.66	1.38	16
24-Mar	16.98	1.27	7.30	5.62	15.66	1.38	16
25-Mar	17.33	1.50	7.26	5.66	15.66	1.38	16
26-Mar	17.39	1.30	7.30	5.67	15.66	1.38	16
27-Mar	17.42	1.63	7.44	5.79	15.66	1.38	16
28-Mar	17.35	1.50	7.46	5.91	15.66	1.38	16
29-Mar	17.30	1.19	7.48	5.92	15.66	1.38	16
30-Mar	17.39	1.11	7.53	5.89	15.66	1.38	16
31-Mar	17.32	1.55	7.55	6.01	15.66	1.38	16
1-Apr	17.02	1.49	7.48	5.96	15.21	1.08	16
2-Apr	16.74	1.70	7.37	5.88	15.21	1.08	16
3-Apr	16.40	1.54	7.38	5.75	15.21	1.08	16
4-Apr	15.84	1.50	7.34	5.77	15.21	1.08	16
5-Apr	15.25	1.70	7.34	5.73	15.21	1.08	16
6-Apr	14.73	1.70	7.39	5.82	15.21	1.08	16
7-Apr	14.16	1.80	7.49	5.79	15.21	1.08	16
8-Apr	13.45	1.20	7.50	5.85	15.21	1.08	16
9-Apr	13.65	1.60	7.38	5.74	15.21	1.08	16
10-Apr	13.80	0.80	7.42	5.81	15.21	1.08	16
11-Apr	15.07	0.80	7.53	6.09	15.21	1.08	16
12-Apr	15.22	0.80	7.51	6.05	15.21	1.08	16
13-Apr	14.83	0.80	7.40	5.91	15.21	1.08	16
14-Apr	13.70	0.90	7.53	5.96	15.21	1.08	16
15-Apr	14.30	0.62	7.61	6.23	15.21	1.08	16
16-Apr	14.80	0.76	7.72	6.24	15.21	1.08	16
17-Apr	14.70	0.90	7.80	6.29	15.21	1.08	16
18-Apr	12.92	0.40	7.78	6.31	15.21	1.08	16
19-Apr	12.83	0.40	7.64	6.30	15.21	1.08	16
20-Apr	12.87	0.80	7.62	6.23	15.21	1.08	16
21-Apr	12.03	1.20	7.56	6.23	15.21	1.08	16
22-Apr	14.64	1.10	7.52	6.06	15.21	1.08	16
23-Apr	16.38	0.78	7.72	6.23	15.21	1.08	16
24-Apr	17.54	0.50	7.95	6.47	15.21	1.08	16
25-Apr	17.75	0.80	8.12	6.75	15.21	1.08	16
26-Apr	17.54	1.10	8.22	6.81	15.21	1.08	16
27-Apr	17.48	1.50	8.21	6.83	15.21	1.08	16
28-Apr	17.36	1.00	8.25	6.89	15.21	1.08	16
29-Apr	16.64	1.10	8.25	6.92	15.21	1.08	16
30-Apr	16.60	1.10	8.15	6.79	15.21	1.08	16
1-May	16.88	1.50	8.04	6.85	16.44	1.94	16
2-May	17.34	1.70	8.23	6.99	16.44	1.94	16
3-May	17.08	2.50	8.22	6.94	16.44	1.94	16

Columbia River Water Elevation at the Interstate Bridges, Daily Statistics (feet, Columbia River Datum), cont'd.

	Daily Maximum	Daily Minimum	Average Daily High	Average Daily Low	Average Monthly Max	Average Monthly Min	Ordinary High Water
4-May	16.28	2.60	8.39	7.08	16.44	1.94	16
5-May	15.21	2.68	8.54	7.16	16.44	1.94	16
6-May	14.56	2.20	8.51	7.23	16.44	1.94	16
7-May	14.90	2.50	8.61	7.24	16.44	1.94	16
8-May	15.10	2.58	8.60	7.32	16.44	1.94	16
9-May	15.20	2.06	8.56	7.41	16.44	1.94	16
10-May	15.30	1.62	8.55	7.32	16.44	1.94	16
11-May	14.70	1.14	8.53	7.32	16.44	1.94	16
12-May	14.74	0.00	8.56	7.33	16.44	1.94	16
13-May	16.36	0.98	8.68	7.40	16.44	1.94	16
14-May	16.76	0.00	8.72	7.34	16.44	1.94	16
15-May	16.73	1.90	8.78	7.54	16.44	1.94	16
16-May	16.14	2.70	8.92	7.70	16.44	1.94	16
17-May	16.01	2.90	9.10	7.78	16.44	1.94	16
18-May	16.85	3.00	9.26	8.05	16.44	1.94	16
19-May	17.55	2.20	9.44	8.28	16.44	1.94	16
20-May	17.78	1.62	9.44	8.37	16.44	1.94	16
21-May	17.91	1.70	9.45	8.32	16.44	1.94	16
22-May	17.93	1.70	9.35	8.22	16.44	1.94	16
23-May	17.55	2.60	9.33	8.24	16.44	1.94	16
24-May	17.31	2.20	9.39	8.30	16.44	1.94	16
25-May	17.15	2.20	9.40	8.28	16.44	1.94	16
26-May	16.16	1.90	9.51	8.32	16.44	1.94	16
27-May	16.26	1.60	9.49	8.25	16.44	1.94	16
28-May	16.56	1.80	9.54	8.35	16.44	1.94	16
29-May	16.88	2.14	9.55	8.42	16.44	1.94	16
30-May	17.15	2.00	9.58	8.48	16.44	1.94	16
31-May	17.24	1.80	9.71	8.50	16.44	1.94	16
1-Jun	17.37	2.70	9.92	8.85	19.19	1.22	16
2-Jun	17.37	2.30	9.99	8.83	19.19	1.22	16
3-Jun	18.46	1.92	9.88	8.66	19.19	1.22	16
4-Jun	19.07	1.82	9.79	8.55	19.19	1.22	16
5-Jun	19.02	2.52	9.80	8.53	19.19	1.22	16
6-Jun	18.69	2.10	9.71	8.60	19.19	1.22	16
7-Jun	18.12	2.20	9.63	8.49	19.19	1.22	16
8-Jun	17.87	2.11	9.48	8.42	19.19	1.22	16
9-Jun	17.64	2.20	9.55	8.43	19.19	1.22	16
10-Jun	17.50	0.90	9.51	8.24	19.19	1.22	16
11-Jun	17.24	1.56	9.36	8.06	19.19	1.22	16
12-Jun	17.70	1.40	9.28	7.95	19.19	1.22	16
13-Jun	18.42	1.40	9.19	7.78	19.19	1.22	16
14-Jun	18.73	1.02	8.97	7.53	19.19	1.22	16
15-Jun	18.77	0.54	8.77	7.33	19.19	1.22	16
16-Jun	18.95	0.78	8.66	7.09	19.19	1.22	16
17-Jun	18.89	0.38	8.46	6.97	19.19	1.22	16
18-Jun	19.70	0.50	8.43	6.97	19.19	1.22	16
19-Jun	20.30	1.08	8.45	6.88	19.19	1.22	16
20-Jun	20.80	0.90	8.42	6.78	19.19	1.22	16
21-Jun	21.10	0.60	8.32	6.73	19.19	1.22	16
22-Jun	21.10	0.43	8.16	6.58	19.19	1.22	16
23-Jun	21.00	0.44	8.05	6.42	19.19	1.22	16
24-Jun	20.90	0.65	8.02	6.35	19.19	1.22	16
25-Jun	20.70	0.70	7.98	6.36	19.19	1.22	16
26-Jun	20.60	0.30	7.86	6.22	19.19	1.22	16
27-Jun	20.50	0.30	7.81	6.24	19.19	1.22	16
28-Jun	20.20	0.70	7.87	6.13	19.19	1.22	16
29-Jun	19.90	0.90	7.80	6.01	19.19	1.22	16
30-Jun	19.00	1.12	7.71	5.86	19.19	1.22	16
1-Jul	17.90	0.66	7.55	5.52	11.29	-0.01	16
2-Jul	17.40	0.80	7.29	5.23	11.29	-0.01	16
3-Jul	16.80	0.70	7.08	4.93	11.29	-0.01	16
4-Jul	16.60	0.50	6.84	4.73	11.29	-0.01	16

Columbia River Water Elevation at the Interstate Bridges, Daily Statistics (feet, Columbia River Datum), cont'd.

	Daily Maximum	Daily Minimum	Average Daily High	Average Daily Low	Average Monthly Max	Average Monthly Min	Ordinary High Water
5-Jul	16.30	0.10	6.55	4.36	11.29	-0.01	16
6-Jul	15.80	-0.40	6.44	4.25	11.29	-0.01	16
7-Jul	14.90	-0.40	6.50	4.29	11.29	-0.01	16
8-Jul	13.80	-0.40	6.48	4.24	11.29	-0.01	16
9-Jul	13.10	-0.30	6.37	4.17	11.29	-0.01	16
10-Jul	11.70	-0.60	6.38	4.09	11.29	-0.01	16
11-Jul	11.31	-0.60	6.32	4.03	11.29	-0.01	16
12-Jul	11.18	-0.18	6.27	3.93	11.29	-0.01	16
13-Jul	10.02	-0.52	6.24	3.92	11.29	-0.01	16
14-Jul	9.57	-0.74	6.03	3.76	11.29	-0.01	16
15-Jul	10.18	-0.58	6.01	3.70	11.29	-0.01	16
16-Jul	10.21	-0.28	5.93	3.51	11.29	-0.01	16
17-Jul	10.05	-0.08	5.82	3.35	11.29	-0.01	16
18-Jul	9.64	0.10	5.84	3.32	11.29	-0.01	16
19-Jul	9.24	0.48	5.81	3.26	11.29	-0.01	16
20-Jul	9.47	0.50	5.75	3.20	11.29	-0.01	16
21-Jul	9.49	0.73	5.76	3.19	11.29	-0.01	16
22-Jul	9.88	0.30	5.77	3.17	11.29	-0.01	16
23-Jul	9.49	-0.20	5.57	2.92	11.29	-0.01	16
24-Jul	9.41	-0.20	5.46	2.82	11.29	-0.01	16
25-Jul	8.89	0.10	5.43	2.76	11.29	-0.01	16
26-Jul	8.27	0.10	5.39	2.75	11.29	-0.01	16
27-Jul	8.39	0.18	5.39	2.62	11.29	-0.01	16
28-Jul	8.10	-0.20	5.33	2.50	11.29	-0.01	16
29-Jul	7.66	-0.06	5.36	2.56	11.29	-0.01	16
30-Jul	7.71	0.06	5.37	2.56	11.29	-0.01	16
31-Jul	7.50	0.06	5.26	2.48	11.29	-0.01	16
1-Aug	7.85	0.00	5.21	2.37	7.39	0.15	16
2-Aug	7.82	0.06	5.12	2.33	7.39	0.15	16
3-Aug	7.43	0.37	5.06	2.25	7.39	0.15	16
4-Aug	7.07	0.50	5.01	2.20	7.39	0.15	16
5-Aug	7.40	-0.01	5.05	2.10	7.39	0.15	16
6-Aug	7.80	0.15	5.11	2.22	7.39	0.15	16
7-Aug	8.00	0.01	5.15	2.34	7.39	0.15	16
8-Aug	7.90	0.20	5.19	2.37	7.39	0.15	16
9-Aug	8.10	0.00	5.08	2.31	7.39	0.15	16
10-Aug	8.10	0.00	4.99	2.11	7.39	0.15	16
11-Aug	7.70	0.20	4.95	2.07	7.39	0.15	16
12-Aug	7.60	0.40	5.03	2.12	7.39	0.15	16
13-Aug	7.50	0.31	5.06	2.20	7.39	0.15	16
14-Aug	7.16	0.28	4.98	2.07	7.39	0.15	16
15-Aug	6.80	0.33	4.98	1.93	7.39	0.15	16
16-Aug	6.84	0.14	4.95	1.92	7.39	0.15	16
17-Aug	7.32	0.12	4.95	1.91	7.39	0.15	16
18-Aug	7.31	0.10	4.88	1.86	7.39	0.15	16
19-Aug	6.94	0.20	4.86	1.91	7.39	0.15	16
20-Aug	7.27	0.06	4.89	1.93	7.39	0.15	16
21-Aug	6.96	0.08	4.84	1.95	7.39	0.15	16
22-Aug	7.10	0.04	4.84	1.87	7.39	0.15	16
23-Aug	6.80	0.14	4.80	1.85	7.39	0.15	16
24-Aug	7.20	0.19	4.70	1.74	7.39	0.15	16
25-Aug	7.30	0.15	4.72	1.68	7.39	0.15	16
26-Aug	7.00	0.02	4.70	1.60	7.39	0.15	16
27-Aug	7.40	0.17	4.71	1.63	7.39	0.15	16
28-Aug	7.40	0.20	4.71	1.74	7.39	0.15	16
29-Aug	7.40	0.20	4.70	1.81	7.39	0.15	16
30-Aug	7.40	0.07	4.70	1.77	7.39	0.15	16
31-Aug	7.10	0.06	4.68	1.73	7.39	0.15	16
1-Sep	6.70	0.10	4.49	1.53	6.35	-0.38	16
2-Sep	7.40	-0.21	4.40	1.32	6.35	-0.38	16
3-Sep	6.60	0.05	4.36	1.10	6.35	-0.38	16
4-Sep	5.60	-0.27	4.26	1.07	6.35	-0.38	16

Columbia River Water Elevation at the Interstate Bridges, Daily Statistics (feet, Columbia River Datum), cont'd.

	Daily Maximum	Daily Minimum	Average Daily High	Average Daily Low	Average Monthly Max	Average Monthly Min	Ordinary High Water
5-Sep	5.40	-0.35	4.22	1.00	6.35	-0.38	16
6-Sep	5.50	-0.47	4.23	0.98	6.35	-0.38	16
7-Sep	6.20	-0.10	4.28	1.07	6.35	-0.38	16
8-Sep	6.30	-0.59	4.25	1.08	6.35	-0.38	16
9-Sep	6.20	-0.70	4.23	1.10	6.35	-0.38	16
10-Sep	6.30	-0.59	4.27	1.13	6.35	-0.38	16
11-Sep	6.30	-0.10	4.33	1.18	6.35	-0.38	16
12-Sep	6.20	-0.38	4.27	1.05	6.35	-0.38	16
13-Sep	6.20	-0.13	4.36	1.16	6.35	-0.38	16
14-Sep	6.20	-0.17	4.40	1.17	6.35	-0.38	16
15-Sep	6.90	-0.16	4.44	1.26	6.35	-0.38	16
16-Sep	6.10	-0.14	4.36	1.19	6.35	-0.38	16
17-Sep	7.17	-0.56	4.44	1.28	6.35	-0.38	16
18-Sep	7.31	-0.38	4.46	1.34	6.35	-0.38	16
19-Sep	7.94	-0.55	4.43	1.26	6.35	-0.38	16
20-Sep	6.69	-0.70	4.29	1.23	6.35	-0.38	16
21-Sep	6.47	-0.84	4.22	1.13	6.35	-0.38	16
22-Sep	6.04	-0.39	4.24	1.09	6.35	-0.38	16
23-Sep	5.90	-0.55	4.25	1.14	6.35	-0.38	16
24-Sep	5.70	-0.33	4.23	1.21	6.35	-0.38	16
25-Sep	6.50	-0.28	4.27	1.20	6.35	-0.38	16
26-Sep	6.50	-0.63	4.34	1.31	6.35	-0.38	16
27-Sep	6.20	-0.69	4.39	1.26	6.35	-0.38	16
28-Sep	6.00	-0.73	4.30	1.18	6.35	-0.38	16
29-Sep	6.00	-0.34	4.26	1.21	6.35	-0.38	16
30-Sep	5.94	-0.16	4.31	1.21	6.35	-0.38	16
1-Oct	6.50	-0.37	4.29	1.23	6.86	-0.30	16
2-Oct	6.72	-0.35	4.15	1.14	6.86	-0.30	16
3-Oct	7.32	-0.06	4.16	1.14	6.86	-0.30	16
4-Oct	6.80	-0.08	4.16	1.16	6.86	-0.30	16
5-Oct	6.53	-0.31	4.24	1.19	6.86	-0.30	16
6-Oct	6.56	-0.68	4.24	1.21	6.86	-0.30	16
7-Oct	6.18	-0.74	4.28	1.20	6.86	-0.30	16
8-Oct	6.51	-0.55	4.35	1.25	6.86	-0.30	16
9-Oct	6.68	-0.35	4.36	1.34	6.86	-0.30	16
10-Oct	6.71	-0.64	4.32	1.28	6.86	-0.30	16
11-Oct	6.00	-0.09	4.33	1.32	6.86	-0.30	16
12-Oct	6.76	-0.46	4.33	1.28	6.86	-0.30	16
13-Oct	7.07	-0.44	4.37	1.37	6.86	-0.30	16
14-Oct	7.19	-0.24	4.32	1.34	6.86	-0.30	16
15-Oct	7.48	-0.32	4.47	1.45	6.86	-0.30	16
16-Oct	7.82	-0.16	4.51	1.56	6.86	-0.30	16
17-Oct	7.92	-0.57	4.52	1.50	6.86	-0.30	16
18-Oct	7.49	-0.55	4.48	1.51	6.86	-0.30	16
19-Oct	6.82	-0.09	4.40	1.44	6.86	-0.30	16
20-Oct	6.33	-0.08	4.37	1.46	6.86	-0.30	16
21-Oct	5.90	-0.03	4.33	1.52	6.86	-0.30	16
22-Oct	7.02	0.00	4.43	1.62	6.86	-0.30	16
23-Oct	6.23	-0.24	4.48	1.61	6.86	-0.30	16
24-Oct	6.53	-0.40	4.52	1.65	6.86	-0.30	16
25-Oct	6.90	-0.11	4.53	1.76	6.86	-0.30	16
26-Oct	7.15	-0.68	4.68	1.71	6.86	-0.30	16
27-Oct	6.80	-0.17	4.66	1.75	6.86	-0.30	16
28-Oct	6.74	-0.16	4.74	1.83	6.86	-0.30	16
29-Oct	6.85	-0.14	4.69	1.95	6.86	-0.30	16
30-Oct	7.23	-0.54	4.67	1.92	6.86	-0.30	16
31-Oct	7.77	0.37	4.74	2.02	6.86	-0.30	16
1-Nov	7.27	0.43	4.72	2.17	9.66	0.66	16
2-Nov	7.20	0.16	4.85	2.16	9.66	0.66	16
3-Nov	7.90	-0.49	4.94	2.32	9.66	0.66	16
4-Nov	7.55	-0.59	4.98	2.22	9.66	0.66	16
5-Nov	7.20	-0.42	5.00	2.36	9.66	0.66	16

Columbia River Water Elevation at the Interstate Bridges, Daily Statistics (feet, Columbia River Datum), cont'd.

	Daily Maximum	Daily Minimum	Average Daily High	Average Daily Low	Average Monthly Max	Average Monthly Min	Ordinary High Water
6-Nov	8.04	0.48	5.14	2.49	9.66	0.66	16
7-Nov	10.33	0.75	5.19	2.62	9.66	0.66	16
8-Nov	10.69	0.56	5.16	2.71	9.66	0.66	16
9-Nov	10.34	0.44	5.26	2.67	9.66	0.66	16
10-Nov	8.80	0.72	5.29	2.72	9.66	0.66	16
11-Nov	8.15	0.32	5.28	2.72	9.66	0.66	16
12-Nov	8.80	0.64	5.38	2.76	9.66	0.66	16
13-Nov	8.80	1.08	5.55	2.87	9.66	0.66	16
14-Nov	9.00	0.77	5.63	3.06	9.66	0.66	16
15-Nov	8.70	0.59	5.61	3.11	9.66	0.66	16
16-Nov	12.30	0.58	5.72	3.23	9.66	0.66	16
17-Nov	12.40	0.63	5.75	3.31	9.66	0.66	16
18-Nov	10.85	0.68	5.61	3.45	9.66	0.66	16
19-Nov	10.08	1.06	5.73	3.48	9.66	0.66	16
20-Nov	10.48	1.03	5.78	3.67	9.66	0.66	16
21-Nov	10.90	0.82	5.98	3.79	9.66	0.66	16
22-Nov	10.86	0.91	6.16	3.95	9.66	0.66	16
23-Nov	10.49	1.00	6.20	4.07	9.66	0.66	16
24-Nov	10.09	0.70	6.21	4.21	9.66	0.66	16
25-Nov	10.19	1.35	6.29	4.19	9.66	0.66	16
26-Nov	10.30	1.14	6.18	4.33	9.66	0.66	16
27-Nov	10.60	1.20	6.14	4.32	9.66	0.66	16
28-Nov	11.91	1.19	6.28	4.23	9.66	0.66	16
29-Nov	9.76	1.07	6.22	4.21	9.66	0.66	16
30-Nov	9.68	0.92	6.28	4.23	9.66	0.66	16
1-Dec	9.50	1.36	6.52	4.40	14.70	1.36	16
2-Dec	12.20	1.34	6.74	4.56	14.70	1.36	16
3-Dec	13.80	1.06	6.82	4.73	14.70	1.36	16
4-Dec	16.40	1.05	6.95	5.02	14.70	1.36	16
5-Dec	16.90	1.10	7.02	5.15	14.70	1.36	16
6-Dec	16.30	0.95	6.99	5.15	14.70	1.36	16
7-Dec	13.60	0.99	6.93	5.06	14.70	1.36	16
8-Dec	14.30	1.27	6.97	5.14	14.70	1.36	16
9-Dec	14.40	1.33	6.92	5.12	14.70	1.36	16
10-Dec	14.00	1.42	7.05	5.12	14.70	1.36	16
11-Dec	13.70	1.50	7.13	5.14	14.70	1.36	16
12-Dec	12.67	1.66	7.11	5.13	14.70	1.36	16
13-Dec	15.00	1.60	7.19	5.32	14.70	1.36	16
14-Dec	17.10	2.04	7.28	5.37	14.70	1.36	16
15-Dec	17.80	1.94	7.22	5.36	14.70	1.36	16
16-Dec	17.30	1.73	7.15	5.26	14.70	1.36	16
17-Dec	17.30	1.15	7.14	5.36	14.70	1.36	16
18-Dec	17.00	1.21	7.10	5.35	14.70	1.36	16
19-Dec	15.80	1.04	7.13	5.28	14.70	1.36	16
20-Dec	13.90	1.00	7.12	5.20	14.70	1.36	16
21-Dec	12.80	1.39	7.13	5.23	14.70	1.36	16
22-Dec	13.80	1.40	7.14	5.23	14.70	1.36	16
23-Dec	13.00	1.48	6.92	5.19	14.70	1.36	16
24-Dec	12.00	1.47	6.63	4.89	14.70	1.36	16
25-Dec	12.60	0.72	6.39	4.43	14.70	1.36	16
26-Dec	15.10	1.16	6.30	4.25	14.70	1.36	16
27-Dec	15.90	1.38	6.60	4.42	14.70	1.36	16
28-Dec	16.10	1.58	6.94	4.80	14.70	1.36	16
29-Dec	15.70	1.70	7.11	5.17	14.70	1.36	16
30-Dec	15.00	1.49	7.22	5.23	14.70	1.36	16
31-Dec	14.83	1.51	7.08	5.27	14.70	1.36	16

Date	1972	1973	1974	1975	1976	1977	1978	1979	1980	1981	1982	1983	1984	1985	1986	1987	1988	1989	1990	1991	1992	1993	1994	1995	1996	1997	1998	1999	2000	2001	2002	2003	2004	2005	2006	2007	2008	2009	2010	2011	2012	2013	2014	2015	2016	2017	2018	2019	2020	2021
January																																																		
1		5.50	10.60	6.20	10.10	5.60	6.10	5.40	6.70	13.20	7.40	7.15	7.00	5.30	5.60	8.29	5.29	5.46	4.65	7.67	5.08			5.61		17.77	7.44	14.13	5.84	3.82		7.99	6.64	4.78	13.53	6.62	4.71	8.11	8.06	7.95	7.59	6.52	5.93	7.60	4.82	6.07	7.53	5.08	4.91	
2		6.40	9.00	6.30	8.90	4.80	5.40	5.80	7.30	12.10	7.25	7.00	7.20	6.40	4.90	7.67	4.94	4.87	4.44	6.87	5.78	4.92		4.69	8.81	22.20	6.68	13.00	5.82	3.64	6.72	8.52	5.73	4.56	13.49	7.52	5.19	10.29	7.82	7.11	6.85	6.49	5.96	7.53	4.67	5.85	7.54	5.20	4.39	
3		6.80	9.70	6.50	8.80	5.70	5.50	6.80	6.70	11.40	6.70	6.60	7.80	6.70	5.60	7.54	5.05	5.91	4.49	6.99	6.47	5.19	5.49	3.84	9.46		6.35	11.34	6.30	3.85	5.62	8.39	5.72	4.49	13.27	8.80	5.84	10.15	7.41	7.71	5.59	6.27	5.95	7.33	4.78	5.20	7.78	5.98	4.63	
4		6.90	8.70	7.10	8.10	5.70	7.30	6.80	6.60	10.80	7.85	7.85	8.80	6.40	5.50	7.01	5.69	5.84	5.68	5.38	6.56	5.74	6.24	3.88	9.67		6.61	10.84	7.35	4.40	5.02	8.13	6.13	4.84	12.58	9.89	6.53	9.96	6.97	7.47	6.10	6.05	5.18	7.66	5.14	5.33	7.53	6.38	4.77	
5		6.80	8.40	7.40	9.10	5.80	8.50	6.40	6.70	9.60	8.45	10.60	9.60	6.70	6.30	6.82	5.62	6.67	5.78	6.23	6.32	5.83	6.81	4.15	9.54		7.14	10.00	7.29	5.11	5.12	7.30	5.71	5.08	10.65	9.49	7.38	9.39	6.93	6.64	6.12	5.76	4.60	7.85	5.61	5.48	7.33	6.86	5.01	
6		6.10	6.80	7.80	9.10	5.70	8.60	6.10	6.70	9.50	8.40	14.30	9.30	6.40	6.30	6.58	5.45	6.98	6.12	5.83	6.20	6.47	6.61	4.68	9.90	18.48	7.82	9.11	7.49	5.32	5.52	6.49	5.76	5.82	9.63	9.98	7.46	9.56	7.26	5.92	5.81	6.01	4.79	7.45	6.27	5.93	6.71	6.39	5.57	
7		5.00	7.50	8.50	10.40	5.80	9.10	5.20	6.90	8.90	8.32	16.25	8.95	7.20	6.70	6.62	5.54	7.59	7.52	6.48	6.15	6.95	6.24	4.42	10.43	16.59	8.20	8.54	5.60	7.42	5.91	7.02	6.66	8.78	9.33	7.05	11.81	7.43	5.64	5.56	6.67	5.05	7.06	6.32	5.86	5.93	5.79	5.99		
8		5.80	7.20	9.60	12.60	5.70	9.20	3.90	6.90	8.90	8.24	16.25	8.40	7.40	7.40	6.74	5.53	8.11	9.38	6.00	6.23	7.38	6.80	4.75	11.10	15.15	7.10	7.91	7.55	6.37	8.42	5.26	6.80	7.28	8.70	8.75	7.77	13.63	7.14	4.95	5.60	7.08	5.42	6.66	6.00	6.11	6.23	5.80	6.44	
9		6.00	7.20	9.70	12.80	5.10	9.30	3.50	7.70	8.20	8.16	14.80	8.00	7.40	7.40	6.31	5.21	9.12	11.32	5.95	5.60	7.19	6.72	4.87	11.12	14.19	7.48	7.90	8.24	6.41	8.12	5.35	7.08	6.86	8.93	8.19	8.20	12.90	6.74	4.85	6.03	8.36	5.40	6.18	6.43	7.15	7.02	5.96	6.30	
10		5.40	7.40	9.90	12.80	4.30	9.50	3.72	8.80	8.10	8.10	13.60	8.00	7.00	8.00	6.37	5.43	10.43	12.20	6.14	5.44	7.19	6.55	5.07	10.55	13.78	8.00	7.73	8.85	6.72	8.52	4.66	6.51	6.89	12.09	7.88	8.35	11.55	6.41	4.90	5.56	8.09	5.60	6.09	6.35	7.81	6.27	5.62	7.46	
11		5.60	7.58	8.90	11.90	4.50	9.50	4.58	8.80	7.80	7.55	12.00	8.15	6.40	7.40	5.98	7.28	10.34	11.90	6.10	5.85	6.80	6.65	5.92	10.57	13.76	7.89	7.48	8.93	6.50	7.72	4.59	6.22	7.03	13.82	7.40	8.44	9.83	6.58	4.37	5.57	7.85	6.18	6.14	6.65	8.00	6.83	5.29	7.74	
12		6.60	7.76	7.60	11.40	5.40	9.20	5.44	9.50	7.10	6.95	11.20	7.40	6.30	7.00	6.56	7.16	10.03	11.48	7.84	5.27	6.18	6.52	6.95	11.10	13.27	8.06	6.87	8.90	6.05	7.02	5.12	5.77	6.39	14.38	7.04	8.28	8.86	7.12	5.85	5.20	7.59	6.35	6.08	6.55	8.33	8.07	4.86	8.42	
13		6.90	7.94	9.40	11.30	5.40	9.00	6.30	10.30	6.80	6.70	11.10	7.10	5.90	6.90	6.34	7.91	10.56	9.62	8.14	4.80	6.16	6.08	6.30	11.21	12.78	9.00	7.12	8.94	5.47	6.62	5.13	5.83	6.00	14.90	6.87	8.04	8.49	7.06	6.68	4.98	7.10	6.22	5.53	7.39	7.74	8.55	4.52	7.83	
14		8.30	8.10	10.90	11.60	5.30	8.30	5.60	11.20	6.90	6.60	10.60	7.15	6.20	6.20	6.53	9.24	9.31	8.35	8.35	4.90	6.35	5.92	6.19	10.45	12.37	10.39	8.54	9.29	4.85	6.02	5.28	5.71	5.91	14.78	6.63	6.90	8.06	6.92	6.67	5.28	6.38	5.66	5.17	6.76	6.85	7.98	4.71	7.54	
15		9.10	13.50	11.30	12.40	5.30	8.40	6.60	12.10	6.90	6.20	9.60	7.20	6.50	6.40	6.49	10.83	8.07	6.63	9.30	5.25	5.96	5.34	8.90	10.77	12.30	10.36	8.93	9.42	4.54	5.32	5.17	5.86	13.97	6.70	7.16	8.43	7.29	7.45	5.50	6.07	5.27	5.70	6.93	6.59	7.61	4.93	6.97		
16		9.40	20.10	10.90	12.20	5.40	8.20	6.00	12.90	7.00	6.90	8.90	7.90	6.30	6.40	6.52	10.41	8.54	6.47	9.67	6.00	5.70	4.67	9.12	11.83	11.82	10.32	10.53	9.69	4.30	6.52	5.27	6.31	4.90	12.21	7.11	6.41	8.30	6.85	10.59	5.24	6.12	5.38	6.30	7.14	6.31	7.66	5.50	7.36	
17		9.40	21.90	9.50	12.80	5.80	8.00	6.00	12.80	7.30	8.50	8.00	8.30	6.70	6.40	5.78	9.75	7.99	6.32	10.15	5.99	5.21	4.19	8.87	12.21	11.03	10.23	11.20	9.68	4.03	6.22	5.43	6.18	4.83	12.26	7.08	6.67	7.30	7.19	12.50	5.92	5.96	5.13	7.09	7.43	6.08	7.98	6.28	6.91	
18		9.80	23.20	8.20	12.80	5.90	8.20	6.00	11.60	7.40	9.00	8.40	8.20	7.10	6.80	5.50	9.07	7.66	6.18	9.41	6.07	4.93	4.81	8.11	12.51	11.37	9.99	12.87	9.29	4.18	5.42	5.85	6.33	5.87	12.97	6.91	6.07	6.40	7.29	13.44	6.30	5.26	5.21	8.91	7.22	7.63	8.45	6.42	6.73	
19		9.70	23.40	7.40	12.80	5.90	8.80	5.40	9.80	6.70	8.90	8.60	8.15	7.20	7.50	5.42	8.75	7.71	5.82	8.58	5.96	6.28	4.46	7.60	13.08	11.39	9.58	13.31	9.05	4.76	5.02	5.80	6.70	5.62	12.66	7.24	6.13	5.93	7.12	13.48	8.97	4.84	4.86	9.73	7.90	8.05	8.39	7.01	6.45	
20		8.80	22.40	7.80	11.80	6.10	8.90	5.20	8.60	7.50	8.65	8.55	8.40	7.20	7.70	5.33	8.29	7.26	5.21	8.63	6.20	7.44	4.55	6.93	13.85	10.90	9.82	13.19	9.06	4.64	4.92	5.66	6.78	5.53	13.43	6.94	6.12	5.68	7.26	13.24	11.25	4.96	4.36	9.62	8.16	8.15	7.94	7.35	6.27	
21		7.80	20.20	6.40	9.80	5.80	8.20	4.80	8.00	7.40	8.30	8.00	8.05	7.00	7.20	5.38	7.83	7.23	4.71	8.28	6.46	6.44	3.60	6.47	14.60	11.17	8.82	13.39	9.18	5.10	5.62	5.52	6.81	5.48	13.42	6.09	6.23	5.59	6.77	12.00	12.40	5.00	4.41	9.72	8.70	7.53	8.08	6.98	6.88	
22		7.30	18.50	6.80	9.40	5.80	7.70	4.60	7.20	7.50	7.80	7.80	6.85	7.40	7.40	5.21	7.31	6.81	5.39	7.90	6.68	6.41	3.10	6.52	14.95	10.75	8.64	13.44	8.96	4.73	5.92	5.46	6.35	5.63	10.22	6.00	6.28	5.68	6.96	11.18	12.24	5.33	4.54	9.04	8.78	6.96	7.74	7.14	6.68	
23		7.50	17.80	7.30	9.30	5.20	7.80	5.90	7.30	7.90	10.00	7.20	7.10	7.40	8.10	5.66	6.53	6.75	6.17	7.42	6.39	6.65	5.08	7.11	14.84	9.95	9.37	13.75	8.23	4.98	6.52	5.54	6.91	5.49	11.05	6.00	6.27	5.53	5.91	11.10	11.36	5.78	4.44	8.18	8.52	6.84	7.28	6.96	7.69	
24		6.60	17.40	7.30	8.60	5.40	8.20	6.70	7.30	7.40	11.75	7.75	8.10	6.90	8.20	6.73	5.59	6.84	5.60	7.59	6.59	6.06	5.78	7.25	14.65	9.12	9.63	13.74	7.96	5.07	7.22	5.51	7.64	5.77	9.65	5.95	6.39	5.51	5.65	10.90	10.55	5.59	4.03	7.48	8.62	6.56	8.44	6.30	8.78	
25		6.40	17.20	7.30	7.90	5.50	8.20	7.20	6.70	6.60	11.60	8.30	8.70	6.90	8.00	6.30	5.42	6.55	6.92	7.73	6.82	5.89	6.12	7.32	14.19	9.58	9.24	13.25	8.15	5.03	7.22	5.58	6.93	5.53	9.31	6.00	5.72	5.71	6.84	10.92	10.27	6.33	4.45	7.09	8.44	6.63	7.70	5.93	8.91	
26		5.40	17.20	11.00	7.80	5.50	7.50	7.30	6.10	5.70	11.70	9.40	9.55	6.80	7.40	7.08	5.56	5.95	7.37	7.23	5.99	5.65	5.98	7.49	13.23	9.71	9.47	11.75	8.18	4.98	8.72	6.36	6.65	6.01	9.07	6.20	5.80	5.46	6.48	10.04	10.04	6.39	4.82	7.00	8.00	6.24	8.89	5.51	8.63	

Date	1972	1973	1974	1975	1976	1977	1978	1979	1980	1981	1982	1983	1984	1985	1986	1987	1988	1989	1990	1991	1992	1993	1994	1995	1996	1997	1998	1999	2000	2001	2002	2003	2004	2005	2006	2007	2008	2009	2010	2011	2012	2013	2014	2015	2016	2017	2018	2019	2020	2021
January																																																		
1		4.20	9.40	3.90	8.50	2.70	4.40	2.00	3.70	11.90	6.60	5.25	5.90	4.10	2.50	5.81	3.77	3.84	2.56	4.88	2.47			3.56		17.27	4.71	13.00	3.89	1.97		5.83	4.91	3.09	12.74	5.03	3.43	5.46	4.24	6.56	6.74	5.35	2.18	6.48	3.58	3.62	5.68	2.40	2.03	
2		4.30	8.10	3.90	7.60	1.70	3.70	1.60	4.00	11.40	6.25	5.05	5.50	4.60	2.30	6.21	2.81	3.39	1.83	4.17	2.50	3.33		2.47		7.63	21.63	4.62	11.34	3.81	1.48		6.58	3.97	2.40	13.01	4.81	3.67	8.11	5.47	5.74	4.85	4.83	2.23	6.25	3.04	4.52	5.24	2.58	2.07
3		5.20	8.30	5.20	7.20	1.90	3.20	4.40	11.30	5.70	4.70	5.65	5.60	2.80	6.05	3.10	3.78	2.20	4.99	3.23	3.36		2.14		8.34		4.55	10.66	4.61	1.19	3.72		6.59	3.95	2.03	12.51	5.43	4.07	9.53	5.54	5.54	4.24	4.59	2.38	5.94	2.99	3.96	5.32	2.62	2.13
4		5.50	8.10	5.70	6.80	3.00	3.20	5.30	4.50	10.30	6.15	5.15	7.25	5.20	3.00	6.24	3.66	4.00	2.93	3.63	4.43	3.81	3.63	1.67	8.90		4.22	10.00	4.97	1.36	3.12	6.41	4.35	2.91	10.65	8.44	4.08	9.14	5.30	6.09	4.57	4.52	2.37	6.12	3.23	3.77	5.34	3.18	2.43	
5		5.70	7.50	5.00	7.40	3.00	5.70	5.10	4.40	9.10	7.40	7.40	8.60	5.00	2.80	5.76	4.20	4.63	3.41	4.48	3.95	4.04		1.60	8.93		4.46	8.91	6.27	1.97	2.92	6.31	4.20	2.64	9.38	8.71	5.23	8.30	5.09	4.92	4.52	4.21	1.98	6.29	3.51	3.71	5.25	3.26	2.01	
6		5.00	5.40	6.90	8.00	3.30	5.80	3.50	5.40	7.60	7.55	10.60	8.70	4.80	3.70	5.66	3.99	5.20	3.75	4.16	4.04	4.36		2.18	8.86	17.35	6.02	8.39	5.95	2.05	3.12	5.43	4.23	2.85	8.12	9.27	6.25	8.60	5.75	3.88	3.99	3.83	1.78	6.36	3.84	4.12	5.26	4.07	2.36	
7		3.80	5.30	7.40	7.00	2.70	7.10	1.10	4.90	7.60	7.37	14.30	8.25	4.40	3.80	5.38	3.99	6.03	4.36	3.99	4.54	4.85		1.84	9.07	15.55	6.39	7.83	5.80	2.28	4.22	4.86	4.71	3.36	7.67	8.18	5.71	9.16	6.02	3.59	3.40	3.50	2.19	5.59	4.01	3.85	4.18	3.45	3.32	
8		3.10	5.80	8.90	11.80	3.40	7.40	0.70	5.80	7.20	7.14	14.80	7.75	5.60	4.10	5.84	4.20	6.38	6.41	4.49	4.56	5.16	4.45	1.85	10.23	14.21	5.51	7.17	6.24	2.53	6.82	4.01	5.43	3.95	7.96	7.90	5.93	11.81	5.61	3.35	3.09	3.83	2.65	5.50	3.91	3.90	3.58	3.07	3.76	
9		4.90	5.40	8.90	12.20	2.20	7.40	0.70	6.30	7.00	6.91	13.60	7.35	5.90	4.30	5.60	3.96	6.81	8.84	4.83	4.16	5.22		1.73	10.67	13.45	5.54	7.12	6.12	2.80	7.12	4.07	4.94	8.80	7.86	7.44	6.86	11.55	5.17	2.78	2.99	5.13	2.85	5.17	3.78	4.34	4.99	3.45	3.86	
10		4.20	5.40	9.30	11.80	1.60	7.40	2.22	7.40	6.80	6.70	11.80	7.25	5.80	4.50	4.97	3.67	8.88	10.71	4.63	3.47	4.95	3.64	1.86	9.47	13.20	6.11	7.03	7.66	2.89	7.52	3.31	5.09	3.18	8.54	7.16	7.03	9.83	4.58	3.31	3.23	6.20	3.56	4.76	3.49	4.76	4.60	3.49	4.10	
11		4.00	5.80	8.00	11.20	1.80	7.80	2.98	7.80	5.90	6.00	11.20	7.35	5.50	4.80	4.45	5.22	9.79	11.30	4.84	4.25	5.01	4.61	2.26	9.07	13.36	6.44	6.15	8.20	3.06	6.22	2.66	4.68	3.61	12.09	6.15	7.20	8.37	4.57	2.44	3.25	6.22	3.82	4.76	3.35	5.91	4.66	3.54	5.41	
12		4.70	5.46	6.40	10.60	2.30	8.00	3.74	7.80	4.80	5.70	9.70	6.50	5.20	4.40	4.62	6.31	9.54	9.83	6.18	4.00	4.26	4.51	3.29	10.55	12.70	6.70	5.50	8.25	3.11	5.42	2.80	4.57	3.63	13.55	6.12	7.56	7.74	4.55	3.02	3.28	5.61	3.92	4.86	3.92	6.46	6.13	3.21	5.67	
13		5.10	5.49	7.70	10.50	2.90	7.90	4.50	8.00	5.40	5.50	9.70	6.10	4.60	4.30	5.10	7.05	9.73	8.04	7.35	2.84	4.10	4.52	4.48	10.52	12.34	7.08	5.70	8.45	2.71	5.02	2.95	4.36	2.80	14.38	5.99	6.85	7.58	4.96	4.68	2.83	5.49	4.72	4.20	4.18	6.35	7.46	2.51	6.23	
14		7.00	5.50	9.90	10.80	2.40	7.40	3.60	10.90	5.60	5.50	9.90	6.20	4.60	4.30	5.04	7.40	7.96	6.83	7.26	2.88	4.29	3.94	4.51	9.84	11.80	8.12	6.61	8.54	2.44	4.62	3.14	4.12	4.13	13.97	5.66	5.87	6.86	5.24	5.39	2.56	5.04	4.13	3.89	5.23	5.23	6.89	2.07	6.36	
15		7.40	8.00	11.10	12.20	2.30	6.70	3.20	11.70	5.50	5.00	8.90	6.20	4.70	4.20	5.20	9.36	6.20	5.43	4.34	3.24	3.85		5.06	9.84	11.72	9.64	7.80	8.71	1.87	3.92	3.15	3.91		12.21	5.61	6.13	7.41	5.14	6.18	2.43	4.57	3.49	4.00	5.04	5.03	6.29	2.12	5.65	
16		8.00	18.20	10.40	12.00	2.20	6.20	4.70	12.50	5.50	5.20	7.60	6.20	4.81	4.20	5.78	9.86	7.36	5.75	9.00	3.48	2.93		8.41	10.82	10.12	9.35	8.35	9.12	1.50	4.32	3.02	4.23	2.56	11.19	5.85	5.36	7.24	5.03	6.78	2.18	4.70	2.99	4.48	4.91	4.82	5.98	2.67	5.51	
17		8.10	21.10	8.50	11.90	2.20	6.20	4.10	12.20	5.60	6.90	6.90	6.75	4.80	4.80	4.91	8.64	6.93	5.53	8.95	3.78		7.96	11.63	10.51	9.56	10.07	8.64	1.31	5.02	2.88	4.19	1.85	10.92	5.89	5.47	6.09	5.13	10.59	2.42	4.38	3.10	4.53	5.91	4.66	6.21	3.14	5.37		
18		8.20	22.70	7.40	12.10	2.70	7.00	4.00	10.20	5.20	8.40	7.10	6.90	5.10	4.80	4.50	7.90	6.62	5.31	8.02	3.59	1.95		6.86	11.75	10.42	9.21	11.01	8.30	1.14	4.22	2.81	4.10	3.33	12.26	5.60	4.04	5.19	5.41	12.28	3.09	3.85	3.06	6.11	5.70	4.92	6.49	3.27	4.82	
19		8.80	23.20	6.50	11.70	2.80	7.00	4.00	8.00	4.00	8.35	7.65	7.05	5.30	6.40	4.32	7.96	6.56	4.76	7.88	3.58	2.51		6.89	12.07	10.83	8.52	12.70	8.10	2.18	3.72	2.88	4.25	3.99	12.17	5.34	4.04	4.67	5.43	13.23	5.21	3.45	2.59	7.85	6.15	6.84	7.73	3.23	4.17	
20		7.70	21.40	6.10	10.10	2.80	7.70	3.20	6.40	4.00	7.80	7.70	6.90	5.80	6.80	4.57	7.25	6.12	3.92	7.76	3.16	3.91		6.23	12.64	10.43	8.04	12.45	7.87	1.83	2.92	2.69	4.31	3.91	12.25	5.35	3.71	4.37	5.14	12.00	8.97	3.30	2.47	8.46	6.86	7.08	7.04	3.76	3.86	
21		6.60	19.20	5.60	9.00	3.40	6.50	2.60	5.80	5.00	7.75	7.20	6.15	5.20	6.20	4.34	6.95	5.82	3.25	7.59	3.68	4.20	2.45	5.51	13.61	10.58	8.20	12.80	7.68	1.78	3.82	2.69	4.58	3.66	12.02	4.51	3.43	4.12	4.97	11.07	11.12	3.28	2.26	8.57	7.09	6.29	6.69	4.14	4.20	
22		6.00	18.00	6.20	8.70	3.30	6.60	2.30	5.50	5.00	7.05	6.35	5.30	5.10	4.00	4.60	6.16	5.56	3.41	6.95	4.22	4.90	2.42	5.23	14.51	9.98	8.01	12.92	7.47	2.10	4.42	2.70	3.97	3.60	11.05	3.98	3.83	3.91	4.54	10.26	11.36	3.71	2.39	8.05	7.36	5.56	6.73	3.91	4.71	
23		6.00	17.50	6.00	8.50	2.50	6.30	2.40	6.20	5.80	7.00	5.90	5.15	6.30	6.00	3.93	5.43	5.15	4.27	6.56	4.31	5.13	2.41	5.71	14.49	8.97	8.10	13.41	7.03	1.83	5.32	2.85	3.91	3.50	9.65	4.50	3.94	3.74	3.67	10.48	10.45	3.88	2.15	7.04	6.78	5.16	6.16	4.41	5.03	
24		5.20	17.20	6.00	7.77	2.50	6.50	4.40	5.50	5.50	10.10	5.80	6.40	6.00	7.70	4.28	4.60	5.60	4.03	6.53	4.45	4.83	2.29	5.90	14.23	8.55	8.64	13.25	6.72	1.99	5.82	2.60	5.12	3.16	8.90	3.99	4.12	3.51	3.19	10.18	9.75	3.73	1.51	6.10	7.14	4.96	6.82	4.05	6.53	
25		4.80	17.00	6.60	6.90	3.10	6.50	5.40	4.60	4.40	11.20	6.75	7.80	5.70	7.00	4.51	4.00	5.66	4.54	6.51	4.40	4.08	3.30	5.31	13.27	8.34	8.22	11.75	6.74	1.95	6.12	2.55	5.54	3.42	8.54	4.09	3.96	3.62	3.58	10.04	9.69	3.68	1.55	5.62	6.96	5.01	7.53	4.10	7.64	
26		4.10	17.10	10.20	6.90	3.80	6.30	5.40	4.00	3.50	11.05	7.00	8.70	5.10	6.30	4.88	4.08	5.02	5.47	5.64	4.10	4.72		5.37	12.61	8.69	8.14	10.31	7.16	2.14	6.82	2.92	5.00	3.25	8.14	3.92	3.58	3.35	3.94	8.46	9.32	4.42	1.65	5.25	7.06	4.54	7.91	3.34	7.69	
27		4.10	16.50	10.30	6.50	3.20	6.00	3.90	4.00	4.70	11.20																																							

Date	1972	1973	1974	1975	1976	1977	1978	1979	1980	1981	1982	1983	1984	1985	1986	1987	1988	1989	1990	1991	1992	1993	1994	1995	1996	1997	1998	1999	2000	2001	2002	2003	2004	2005	2006	2007	2008	2009	2010	2011	2012	2013	2014	2015	2016	2017	2018	2019	2020	2021
July																																																		
1		1.70	17.60	6.90	7.90	1.40	4.80	1.90	4.60	6.80	12.95	4.40	12.20	2.95	1.93	2.10	1.95	2.74	6.13	6.43	2.53	4.33	2.70		7.64	8.14	5.78	8.93	3.97	0.66	8.32	2.88	3.40	3.98	3.60	3.23	8.23	4.23	7.50	12.08	11.87	6.38	7.58	2.20	2.87	4.86	4.42	2.56	7.42	
2		1.80	17.00	5.00	7.20	0.80	4.70	1.10	4.10	6.50	12.90	4.20	12.00	2.95	2.14	1.77	1.70	2.34	5.98	6.34	2.15	2.14	1.66		7.09	8.04	5.71	8.36	3.19	0.82	8.42	2.82	3.92	4.14	3.17	1.88	8.41	2.73	5.88	12.96	11.66	6.62	6.98	2.55	3.23	4.94	2.53	2.42	7.36	
3		2.30	16.60	5.00	5.50	0.70	3.60	1.10	3.40	6.20	12.55	5.10	11.05	4.05	2.29	0.92	1.52	2.39	6.11	6.95	1.91	4.11	1.64		6.40	8.06	4.01	7.89	3.03	1.10	7.52	1.70	3.05	3.38	2.71	2.23	8.87	2.46	5.17	13.27	11.11	6.36	6.26	2.71	3.18	4.10	2.46	2.00	7.76	
4		1.30	16.50	6.60	4.90	0.50	3.70	1.70	3.40	6.60	12.30	5.10	9.30	3.60	1.40	0.60	1.47	1.82	5.31	6.01	1.81	3.31	3.46		6.68	8.27	4.51	7.52	2.91	1.22	7.62	1.12	2.85	2.82	2.76	2.27	8.98	2.26	3.83	13.43	10.06	5.93	6.20	2.38	2.88	4.05	2.18	2.02	7.58	
5		1.20	16.10	6.00	4.90	0.10	3.60	1.70	3.10	5.60	11.75	5.10	7.20	2.65	0.88	1.32	0.92	1.80	4.63	5.84	1.58	2.94	1.37		7.02	7.95	4.13	6.50	2.94	0.68	6.72		2.54	2.03	1.73	2.15	7.70	2.16	3.80	10.08	5.67	5.66	2.30	2.93	4.75	1.13	1.89	6.36		
6		1.70	15.40	6.10	4.80	-0.40	3.90	2.00	3.10	5.70	10.90	5.50	7.70	2.35	0.90	0.84	1.20	2.19	5.18	5.74	1.21	3.05	2.18		6.06	7.80	3.95	6.26	3.11	0.34	5.62	1.31	2.97	3.14	2.43	2.85	6.27	2.96	3.12	11.48	10.51	6.25	4.61	2.56	2.53	4.16	1.74	1.66	5.01	
7		0.90	14.20	7.20	4.90	-0.40	4.60	2.00	3.90	6.70	10.65	6.40	7.50	2.00	1.02	0.98	1.67	2.03	5.36	6.16	1.21	3.59	2.68		6.87	7.93	4.00	5.50	4.28	0.14	5.42	0.71	2.75	2.27	2.70	2.13	5.86	2.90	3.47	11.55	9.80	6.08	4.84	2.22	2.99	4.20	1.51	1.53	4.82	
8		0.60	13.30	8.30	5.10	-0.40	3.80	1.50	4.50	7.80	10.30	5.80	6.90	1.40	1.00	1.53	1.78	1.49	4.79	6.56	0.94		2.80		6.26	7.33	4.08	6.09	3.89	-0.04	5.22	0.88	2.50	3.23	3.76	1.98	5.48	3.35	3.39	11.44	8.81	5.22	5.29	1.93	2.92	4.32	1.94	1.34	4.75	
9		1.10	12.40	9.20	5.50	-0.30	3.10	1.40	4.50	8.25	9.50	4.30	7.20	1.00	2.29	1.79	1.40	0.51	4.56	5.78	0.87	3.87	2.99		6.17	6.32	4.85	6.47	2.92	-0.10		1.83	2.46	3.44	4.24	2.50	5.34	3.62	4.25	11.28	8.76	5.22	4.86	1.71	2.49	3.92	2.07	1.28	4.41	
10		2.00	11.10	8.50	5.80	-0.60	3.10	2.40	4.40	8.30	8.30	4.10	6.30	1.05	1.03	2.28	1.45	0.89	5.23	5.27	1.08		3.30		6.54	6.79	4.75	5.96	2.97	0.26		3.19	2.85	2.89	3.88	2.82	4.63	3.51	4.12	11.05	8.59	4.17	4.50	1.54	1.73	3.99	2.22	1.35	4.58	
11		2.10	10.00	7.80	5.70	-0.60	4.80	2.30	4.40	6.15	8.75	3.70	5.25	1.10	2.69	2.36	1.58	0.19	4.88	5.47	2.30		2.60		6.26	6.91	4.00	6.06	3.05	0.18	4.95	3.04	2.02	2.90	4.27	2.82	4.14		4.24	10.53	8.97	3.61	5.14	1.39	1.30	3.16	2.79	1.43	4.52	
12		2.10	9.50	6.70	6.00	0.00	4.70	2.50	3.70	4.70	8.50	4.50	4.98	1.40	3.55	1.94	1.36	1.00	5.05	5.43	1.78	1.75	2.79		6.41	7.30	3.50	6.80	3.37	-0.18	5.66	2.99	2.06	2.63	4.25	3.29	3.58		3.95	9.40	8.95	3.36	5.18	1.43	1.45	3.21	3.46	1.71	3.19	
13		2.80	8.10	5.70	6.00	0.30	5.20	2.70	2.70	4.10	8.00	6.00	4.72	1.05	3.06	1.87	2.13	1.29	4.92	5.59	1.38	2.52	2.86		6.63	6.31	4.15	6.87	-0.52	5.97	2.73	2.71	2.41	3.73	3.94	3.75		3.60	8.81	8.42	3.26	5.65	1.78	1.40	2.94	3.40	2.14	3.26		
14		2.00	6.40	4.90	6.10	0.40	5.20	1.30	2.70	4.50	7.70	6.60	4.45	1.00	2.92	2.09	2.04	1.63	3.70	5.68	2.14	2.41	2.54		6.58	5.88	4.39	6.62	3.69	-0.74	5.42	2.42	1.86	2.70	3.86	4.04	2.72		3.50	8.63	8.83	3.53	4.93	2.07	1.69	3.13	3.11	1.94	3.75	
15		0.90	6.10	5.50	6.80	0.40	4.90	0.80	2.60	5.40	7.50	5.40	4.20	0.75	2.70	1.95	1.99	1.64	2.93	4.96	2.34	2.29	2.15		6.65	6.47	4.44	7.31	3.54	-0.58	5.58	2.95	2.55	3.42	3.24	3.94	2.26		3.27	9.06	8.20	3.41	4.26	2.47	1.47	3.21	3.58	1.74	3.59	
16		1.60	5.60	4.70	6.60	0.50	2.90	0.80	2.50	5.70	7.00	6.40	4.05	1.20	3.69	1.55	1.33	0.98	2.53	4.48	2.31	2.31	1.97		6.06	7.08	4.52	7.25	2.66	-0.28	4.63	2.25	1.61	3.35	2.61	4.31	2.54	1.76		3.66	8.84	8.21	3.51	4.34	1.98	1.59	2.84	3.43	2.09	3.20
17		2.80	5.90	4.40	6.50	0.10	2.90	1.40	2.30	6.40	6.30	5.80	4.05	1.40	3.19	1.21	0.52	0.80	2.69	3.88	2.56	2.79	1.66		6.25	3.91	6.74	2.75	-0.08	4.29	2.56	1.87	3.37	2.58	4.31	1.96	2.48	2.94	7.92	9.12	3.05	4.05	1.68	2.03	2.39	3.19	1.87	3.33		
18		3.20	5.90	4.60	6.30	0.10	3.00	1.90	2.00	4.85	6.20	5.80	4.50	1.80	3.15	0.77	0.58	0.98	2.92	2.86	2.31	3.42	1.74		5.43	7.75	3.70	6.15	2.75	0.14	5.25	2.16	1.48	3.11	2.53	3.04	2.03	2.27	2.11	7.82	8.20	3.21	4.22	1.67	1.86	2.97	2.52	1.88	3.09	
19		3.10	6.90	4.10	6.20	0.80	4.40	2.10	1.70	3.50	5.35	5.90	4.30	2.10	3.15	0.76	0.48	1.00	2.89	2.42	2.05	3.52	2.42		5.21	7.97	3.54	6.00	3.00	0.72	4.59	0.75	1.36	3.04	2.27	2.61	1.71	2.19	2.15	7.97	7.58	3.29	3.13	2.09	2.52	3.25	2.30	1.63	3.01	
20		2.80	7.00	3.70	6.40	1.20	3.80	2.60	1.70	3.40	5.80	5.50	3.85	2.25	2.80	0.87	0.87	1.54	3.17	2.20	1.47	3.69	2.88		4.86	7.84	3.86	5.01	2.89	0.54	4.34	0.50	1.68	2.96	2.51	2.30	2.37	2.40	2.38	7.47	7.29	3.28	3.32	1.79	2.25	3.21	1.27	1.46	3.09	
21		1.00	7.10	3.20	6.50	0.90	3.80	1.30	1.80	5.00	5.75	5.60	2.55	1.75	3.33	1.36	0.73	1.64	3.23	2.39	1.36	3.45	3.67		4.23	7.67	3.98	4.80	3.10	0.80	4.50	1.34	1.19	2.77	2.66	2.08	2.24	2.70	2.12	6.68	7.79	3.78	3.38	1.49	2.43	3.23	2.05	1.42	4.16	
22		0.40	6.60	4.20	7.40	0.30	4.10	0.80	1.90	4.10	6.00	5.60	2.40	1.00	3.92	1.66	0.92	1.28	3.38	2.18	1.69	4.46	3.47		4.08	7.10	3.92	5.37	2.44	0.66	4.97	1.34	0.95	3.65	2.87	2.30	1.78	2.45	1.73	6.54	9.11	3.73	3.36	1.44	2.23	2.85	1.65	1.21	3.72	
23		1.00	6.40	3.50	6.80	-0.20	3.00	0.80	2.50	3.90	6.30	5.20	2.25	0.40	3.96	1.20	0.43	0.33	2.66	2.25	1.56	3.52	3.10		4.14	7.28	4.42	4.60	1.57	0.54	4.50	1.53	0.76	3.28	2.58	2.86	1.59	2.20	1.81	5.71	8.65	3.78	2.97	0.84	1.65	2.98	1.58	0.96	3.74	
24		1.30	6.90	2.70	5.90	-0.20	3.60	0.80	2.50	4.30	4.70	4.30	1.95	0.75	3.93	1.53	0.36	0.37	2.66	2.86	0.85	3.35	2.77		4.53	6.91	3.87	4.60	1.77	0.56	4.21	2.27	1.11	2.81	2.89	2.26	1.38	1.99	2.38	5.65	8.27	3.17	3.23	0.77	1.50	2.33	2.62	0.32	3.10	
25		1.40	7.00	3.40	4.70	0.10	3.60	1.60	2.30	4.50	4.20	4.30	2.10	0.10	3.07	1.24	0.50	0.53	2.41	3.29	1.14	2.35	2.44		5.02	6.62	3.75	4.91	2.12	0.32	4.17	1.90	0.43	2.28	3.00	1.99	1.62	2.57	2.34	5.64	6.94	2.83	3.61	1.28	1.36	2.77	2.61	0.76	2.71	
26		1.50	6.50	2.90	4.70	0.10	3.50	2.20	2.20	3.25	4.80	4.40	2.15	0.10	2.72	1.19	1.27	1.09	2.32	3.01	0.56	2.40	3.04		5.15	6.18	3.37	5.50	2.29	0.20	3.38	1.18	0.97	2.68	3.23	1.94	1.87	2.10	2.16	5.50	6.78	3.25	3.93	1.39	1.28	2.87	2.12	1.28	2.70	
27		2.30	5.00	1.40	4.80	0.50	3.00	2.30	2.10	3.20	4.85	4.80	2.30	0.20	2.44	1.00	1.21	1.29	2.09	2.52	0.59	3.14			4.43	4.98	3.38	4.64	2.85	0.18	2.89	1.21																		

