



Interstate
BRIDGE
Replacement Program



Community Briefing

February 2021

Closed Captions in English and Spanish

English closed captions are available within Zoom and YouTube.

Users can follow this link to view both English and Spanish captions in a separate browser window:

<https://ibr.news/captions>

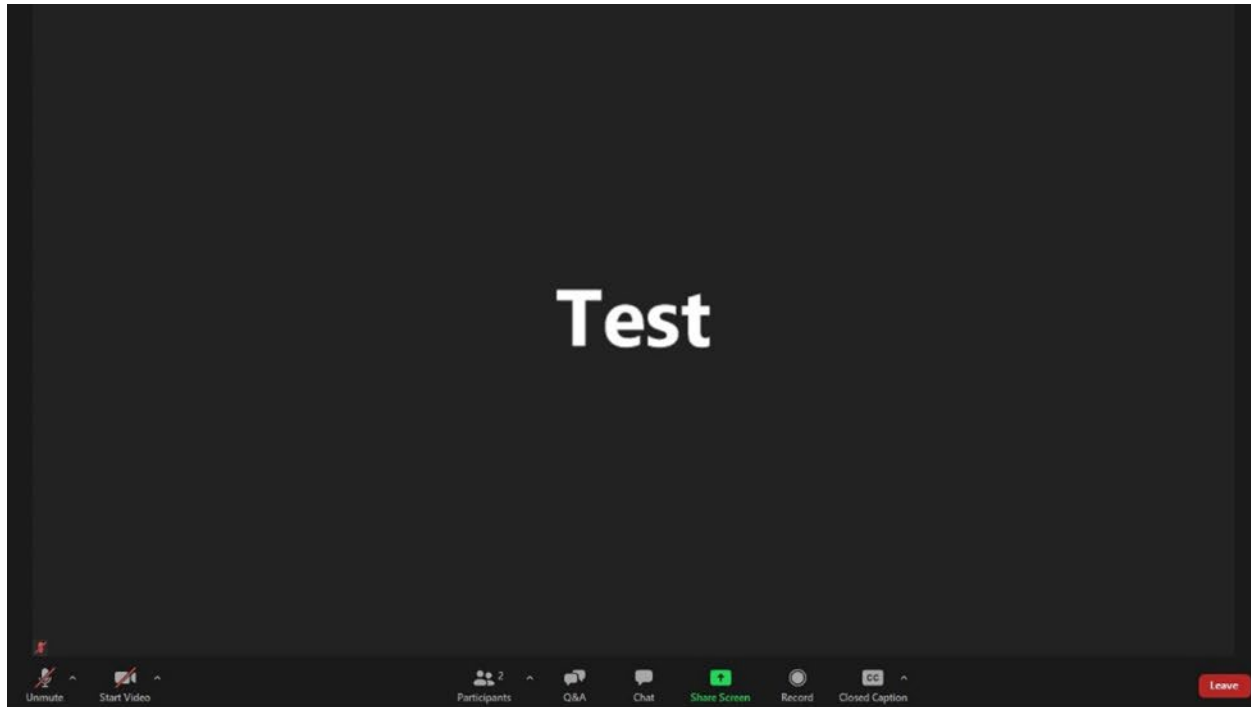
Subtítulos disponible en Inglés y Español

Los subtítulos en Inglés están disponibles en Zoom y YouTube.

Usuarios pueden seguir este enlace para ver los subtítulos en Inglés y Español en una ventana separada del navegador:

<https://ibr.news/captions>

How to access closed captions



1. At the bottom middle of your screen you should see a menu of options. If you can't see the menu, hover your mouse over the bottom middle of the screen.
2. Then click on the “CC” icon and a separate window with captions will appear.



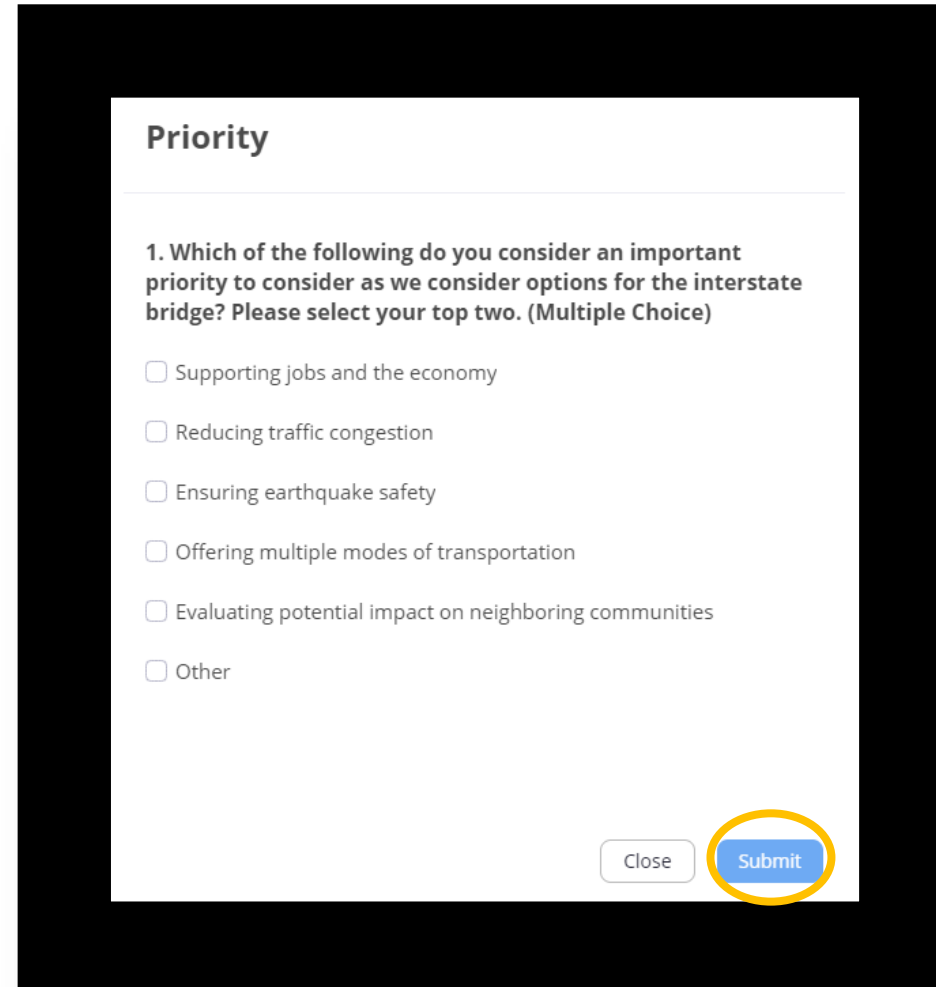
For technical difficulties, call: (503) 897-9219 ext. 413

Community Briefing Today: What to Expect

- ▶ **Presentations:** Expert speakers from the IBR program team
- ▶ **Interactivity:** Audience participation opportunities
- ▶ **Public engagement:** Ways of getting involved in the IBR program now and in the future

Zoom Webinar Audience Participation

- ▶ Select your top two for each audience participation question
- ▶ Press submit

A screenshot of a Zoom webinar audience participation poll. The poll is titled "Priority" and asks the question: "1. Which of the following do you consider an important priority to consider as we consider options for the interstate bridge? Please select your top two. (Multiple Choice)". There are six options listed with checkboxes: "Supporting jobs and the economy", "Reducing traffic congestion", "Ensuring earthquake safety", "Offering multiple modes of transportation", "Evaluating potential impact on neighboring communities", and "Other". At the bottom right of the poll, there are two buttons: "Close" and "Submit". The "Submit" button is highlighted with a yellow circle.

Priority

1. Which of the following do you consider an important priority to consider as we consider options for the interstate bridge? Please select your top two. (Multiple Choice)

- ☐ Supporting jobs and the economy
- ☐ Reducing traffic congestion
- ☐ Ensuring earthquake safety
- ☐ Offering multiple modes of transportation
- ☐ Evaluating potential impact on neighboring communities
- ☐ Other

Close Submit



Welcome and introductions

Kirsten Pennington, IBR Program Deputy Program Manager

Your IBR Team 2/18 and 2/23



Ray Mabey, PE
IBR Program
Assistant
Administrator



Chris Regan
IBR Program
Environmental
Manager



**Kimberly
Pincheira**
IBR Program
Communications
Manager



Jake Warr
IBR Program
Equity Lead



**Kirsten
Pennington**
IBR Program
Deputy Program
Manager

Audience Participation: Priorities

What are you most interested in learning about in today's presentation?

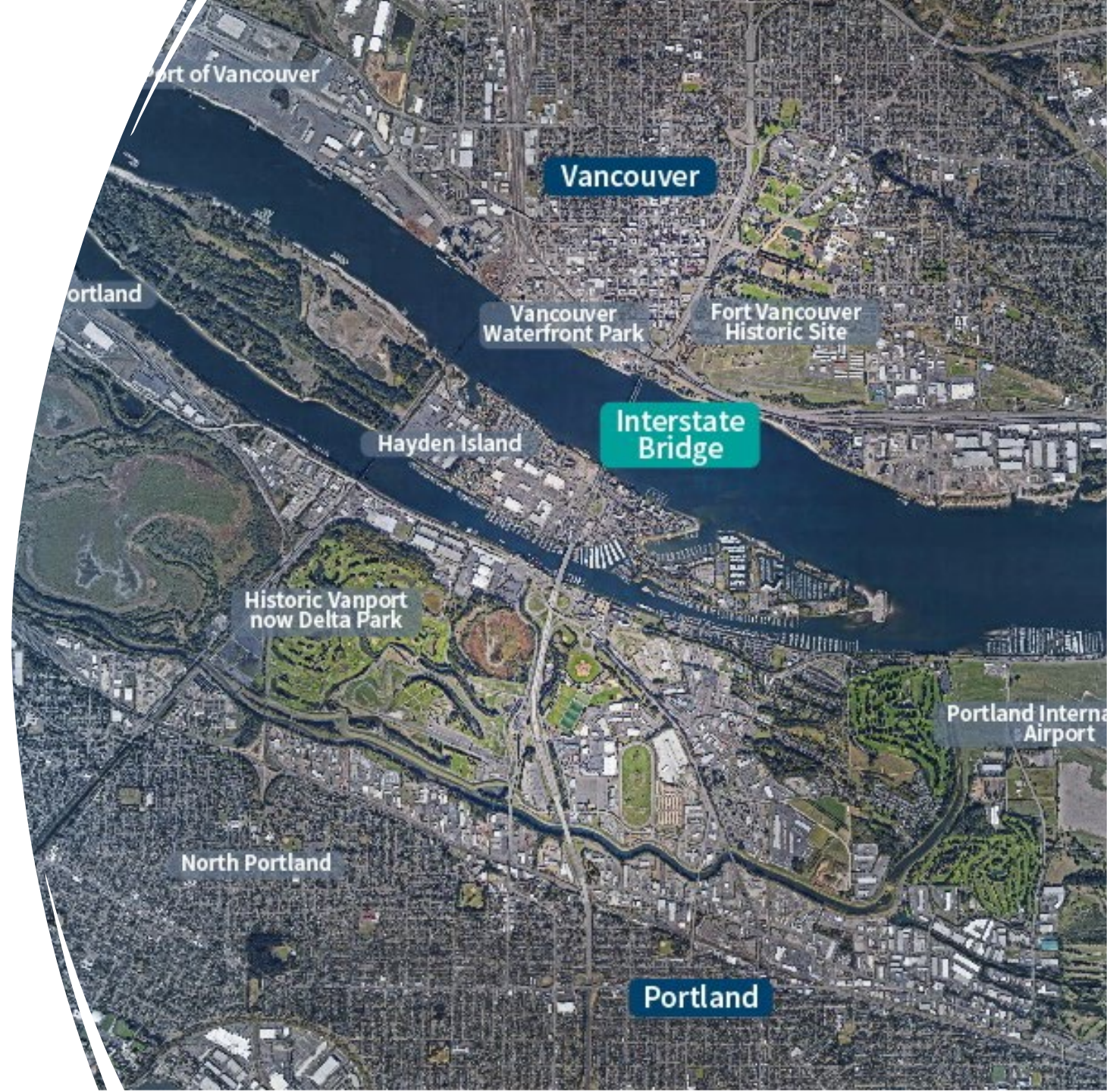
- a) What is the Interstate Bridge Replacement program
- b) Plans for future community engagement and feedback
- c) Potential benefits a replacement may offer
- d) The timeline and process for considering a bridge replacement
- e) Something else



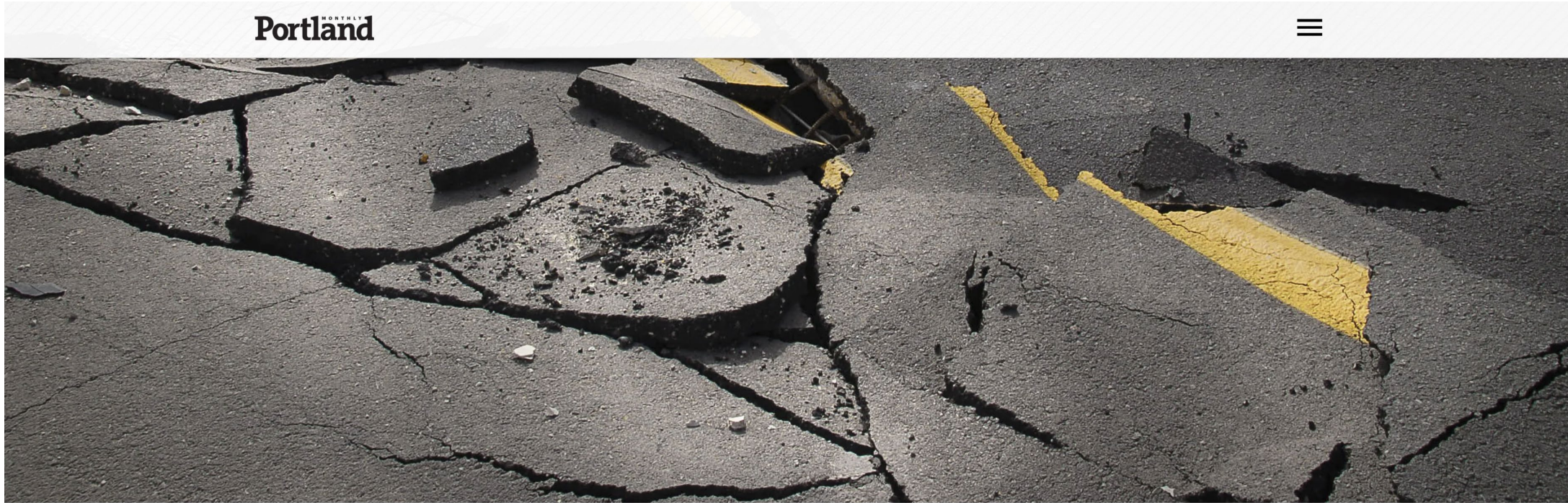
IBR Program Introduction

Ray Mabey, PE, IBR Assistant Program Manager

Program Area



Seismic vulnerability



THE BIG ONE

The Big One Is Coming. What Will Happen to Portland?

The Northwest is long overdue for a devastating earthquake. Here's what to know.

Growing travel demand and congestion



Image credit: Columbian.com

Limited public transportation



Inadequate bicycle and pedestrian facilities



Image credit: Columbian.com

Transportation safety concerns

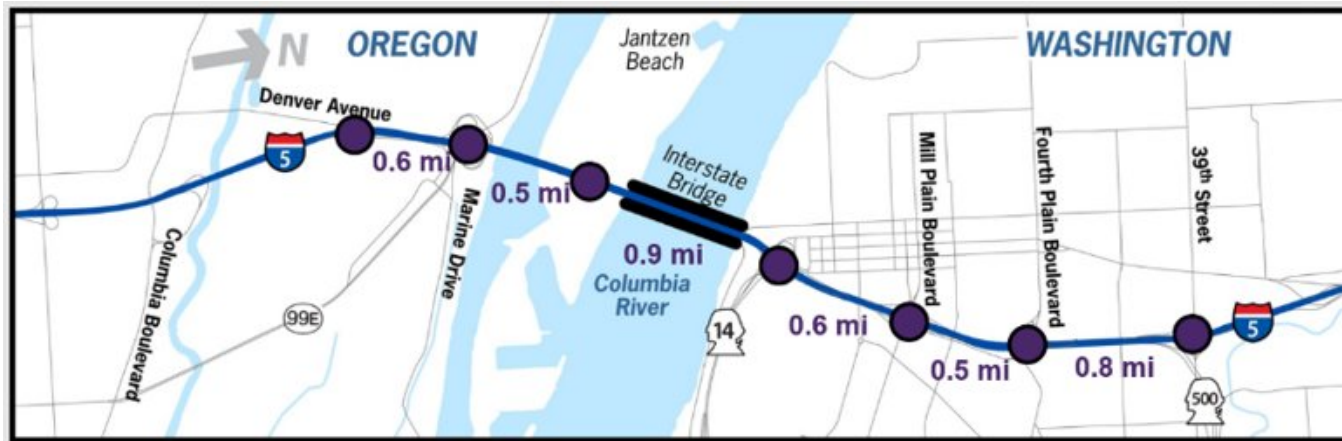


Image credit: Columbian.com

Audience Participation: Current Problems

What are your concerns with the existing Interstate Bridge?

- a) Earthquake vulnerability
- b) Limited public transit
- c) Transportation safety
- d) Congestion and reliability
- e) Inadequate Bike / Pedestrian path
- f) Impaired Freight Movement
- g) Other



Environmental Process

Chris Regan, IBR Program Environmental Manager

IBR Program Timeline



The Environmental Process

The NEPA process was created to ensure that, for any given project, the public has a voice and the environmental impacts are studied.

Community
engagement

Environmental
impact



Community Engagement

Community engagement is critical to all aspects of the program, especially at this early stage. In 2021, we will need your support in the following activities to help shape future alternatives:

- Updating the **Purpose & Need**, which is necessary for proceeding with the environmental review process and NEPA.
- Establishing community **Vision & Values**.
- Developing Screening Criteria for evaluating alternatives.

Advisory Groups

Executive Steering Group

Purpose: Provides regional leadership guidance and recommendations on key program development topics

Equity Advisory Group

Purpose: Provides insight and input on the program's processes, approaches, and decisions that may affect historically underserved and underrepresented communities

Community Advisory Group

Purpose: Provides input and feedback reflective of the community's needs, issues, and concerns to influence program outcomes

Purpose and Need

Purpose

- Concisely identifies what the proposed action is intended to accomplish
- Stated broadly enough that more than one solution can be considered

Needs

- Evidence of deficiencies, problems
- Explains why the proposed action has been undertaken
- Identifies existing or expected future problems within a defined area

Previously identified Purpose and Need

- Seismic vulnerability
- Inadequate bicycle and pedestrian facilities
- Limited public transportation operation, connectivity, and reliability
- Growing travel demand and congestion
- Safety and vulnerability to incidents
- Impaired freight movement

Community Vision and Values

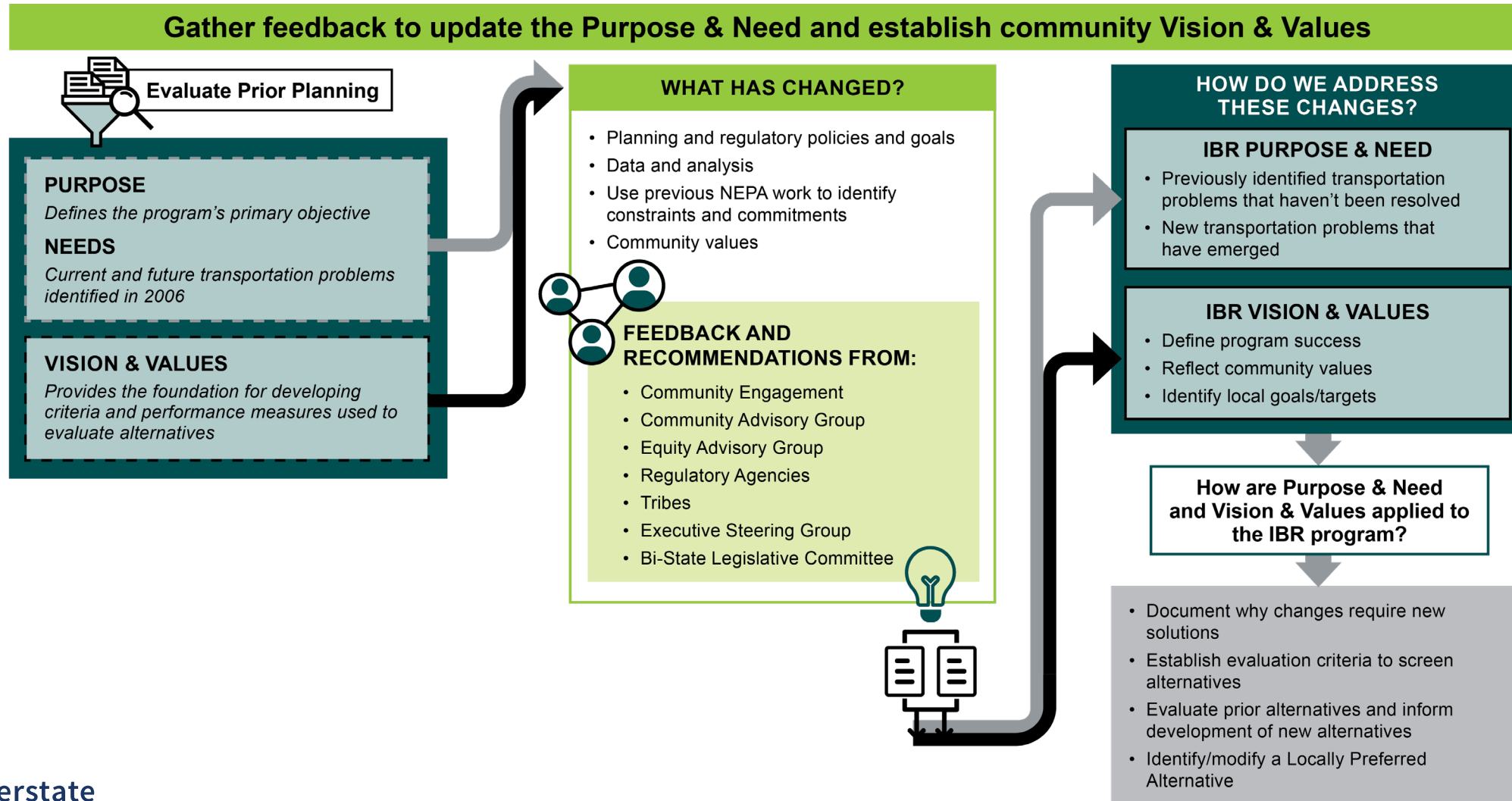
Vision and Values

- Foundation for developing criteria and performance measures to evaluate alternatives

Previously identified Vision and Values

- Community Livability
- Mobility, Reliability, Accessibility, Congestion Reduction and Efficiency
- Modal Choice
- Safety
- Regional Economy and Freight Mobility
- Stewardship of Natural and Human Resources
- Distribution of Impacts and Benefits
- Cost-effectiveness and Financial Resources
- Bi-state Cooperation

Purpose & Need | Vision & Values



Audience Participation: Priorities

Which of the following do you view an important priority to address as we consider options for the Interstate Bridge?

- a) Supporting jobs and the economy
- b) Reducing traffic congestion
- c) Ensuring earthquake safety
- d) Offering choices for how people can travel (car, transit, walk, bike, roll)
- e) Evaluating potential impact on neighboring communities
- f) Improving road safety
- g) Minimizing environmental and/or climate impacts



Centering Equity

Jake Warr, IBR Program Equity Lead

Federal Guidance

- Ensure the **full and fair participation** by all potentially affected communities
- **Avoid, minimize, or mitigate** disproportionately high and adverse human health and environmental effects, including social and economic effects, on minority or low-income populations; and
- Prevent the denial of, reduction in, or significant delay in the **receipt of benefits** by minority or low-income populations.



Beyond Compliance and Towards Equity

- ▶ How might a project look if...
 - It **disproportionately benefited** historically marginalized communities?
 - It **centered** the voices of historically marginalized communities?
 - The **processes** (planning, engagement, etc.) were considered concrete outcomes?



Image credit: blog.mass.gov

How we are Centering Equity

- ▶ Grounding the program in the **history** of the river, the I-5 corridor, and the region
- ▶ **Chief Equity Officer** (Johnell Bell) who leads an Equity Program team
- ▶ An **Equity Advisory Group** to guide the program towards equitable processes & outcomes
- ▶ Inclusive and intentional **community engagement** strategies
- ▶ **Language** accessibility & inclusion
- ▶ Accessibility & inclusion for **people with disabilities**
- ▶ **Education & training** for IBR program staff

Audience Participation: Equity

Which of the following communities do you have connections to that you might share information about the IBR program with?

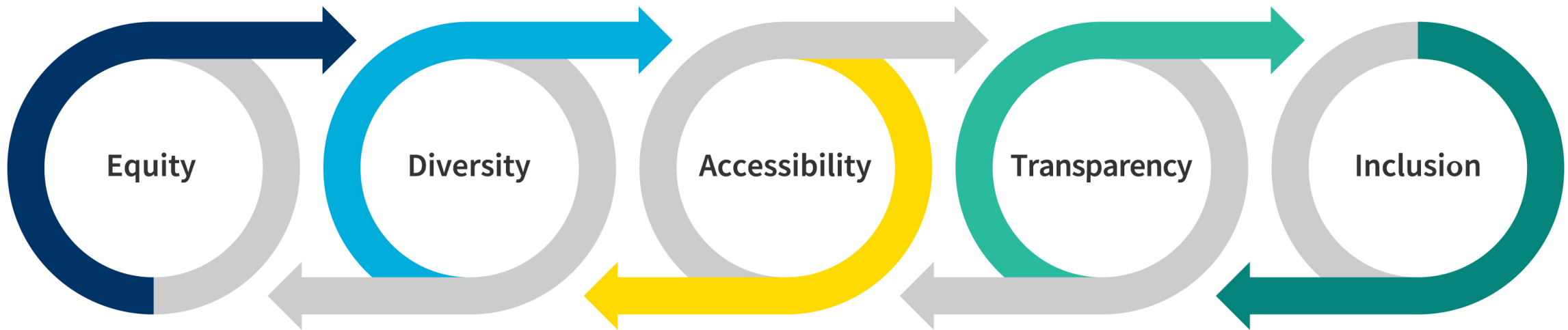
- a) Black, Indigenous, and/or other communities of color
- b) People who would like to engage in a language besides English
- c) Low-income communities
- d) People with disabilities
- e) Older adults
- f) Youth
- g) Other



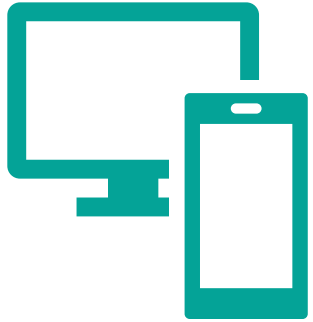
Community Engagement We Are Listening

Kimberly Pincheira, IBR Program Communications Manager

Community Engagement Program



Outreach Activities and Getting the Word Out



- ▶ Virtual Public Meetings
- ▶ Online Open Houses and Surveys
- ▶ Live Virtual Events
- ▶ Multicultural Outreach Liaisons
- ▶ Community Based Organization Outreach
- ▶ Social Media Engagement
- ▶ Media Outreach
- ▶ Direct Email Notifications
- ▶ Digital, Print, Direct Mail and Radio Advertising
- ▶ Working/Focus/Discussion Groups
- ▶ Video Storytelling
- ▶ Podcast Series

Online Open House

- ▶ **February 16 – March 1**
- ▶ **Goals:**
 - Provide program overview, including background, timeline and process
 - Solicit input and comments
 - Open house available in 8 languages in addition to English: Slavic (Russian and Ukrainian), Chinese (Simplified and Traditional), Somali, Korean, Spanish and Vietnamese
 - Seek participation in interactive survey

The screenshot shows the website for the Interstate Bridge Replacement Program's Online Open House. At the top, the logo for the Interstate Bridge Replacement Program is on the left, and the website URL 'interstatebridge.org' with social media icons is on the right. The main header area has a dark blue background with the text 'ONLINE EVENT' in a small green box. Below this, the headline 'Help shape the future!' is prominently displayed, followed by 'Interstate Bridge Replacement program Open House and Interactive Survey' and the dates 'February 16 – March 1'. To the right of the text is a photograph of many hands of different colors stacked together in a circle. Below the main header is a row of five green buttons: 'HOW TO PARTICIPATE', 'COMMUNITY SURVEY', 'COMMUNITIES VIDEOS', 'MEETING MATERIALS', and 'SHARE YOUR THOUGHTS'. The main content area is divided into two columns. The left column is titled 'Welcome!' and contains a paragraph about replacing the aging Interstate Bridge with a modern, resilient structure, emphasizing 'Comprehensive and equitable community engagement'. It also includes a 'Thank you for visiting' message. The right column is titled 'How to Participate' and lists three steps: '1. Take our online survey' (with a link to the interactive survey), '2. Watch our videos', and '3. View our exhibit boards'. Below this, there is a section titled 'We want to hear from you!' with the heading 'Survey activities include:'. This section contains three boxes: 'Identifying problems' (Evaluate problems identified in previous planning efforts), 'Mapping challenges' (Highlight issues experienced when traveling within the bridge replacement program), and 'Defining community values' (Identify opportunities and benefits for the community). A 'Take the Survey' button is at the bottom of this section. To the right of the survey activities is a section titled 'Your input is important!' which states that a transparent process with extensive community involvement is critical and that the survey will be open from February 16 to March 1, 2021. A 'TAKE THE SURVEY' button is located at the bottom of this section.

interstatebridge.org

ONLINE EVENT

Help shape the future!

Interstate Bridge Replacement program
Open House and Interactive Survey
February 16 – March 1

HOW TO PARTICIPATE COMMUNITY SURVEY COMMUNITIES VIDEOS MEETING MATERIALS SHARE YOUR THOUGHTS

Welcome!

We are replacing the aging Interstate Bridge across the Columbia River with a modern, seismically-resilient, multimodal structure. **Comprehensive and equitable community engagement** is at the foundation of decision making for the Interstate Bridge Replacement Program. We need your voice and vision to build a program that is reflective of the communities we serve.

Thank you for visiting. The program is happy to have you here!

How to Participate

1. **Take our online survey**
Link: Interstate Bridge Replacement program Interactive Survey
2. **Watch our videos**
3. **View our exhibit boards**

We want to hear from you!

Survey activities include:

- Identifying problems**
Evaluate problems identified in the previous planning efforts and suggest others that may be missing.
- Mapping challenges**
Highlight issues you experience when traveling within the Interstate Bridge Replacement program with an interactive mapping tool.
- Defining community values**
Identify opportunities and benefits for our community and share values most important to you.

Take the Survey

Your input is important!

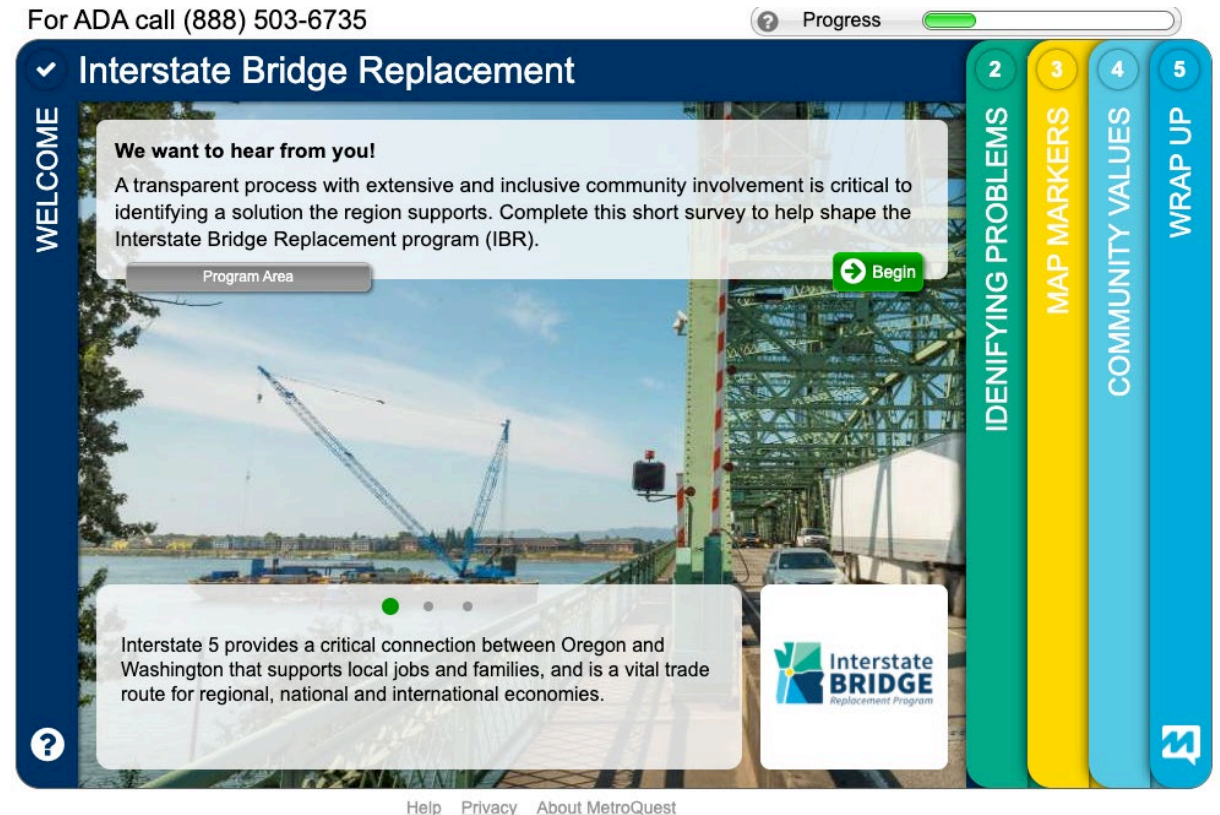
A transparent process with extensive and inclusive community involvement is critical to identifying a solution the region supports. Complete this short survey to help us better understand the transportation problems you experience with the Interstate Bridge and your vision for an effective solution. The survey will be open February 16 – March 1, 2021.

TAKE THE SURVEY

Community Insights – Interactive Survey


► February 16 – March 1

- **Purpose:** Gather input to inform the Purpose and Need and establish the community Vision and Values
- Available online through our Open House (in English, Spanish, and Vietnamese)
- Printed copies available in Slavic (Russian and Ukrainian), Chinese (Simplified and Traditional), Somali, Korean, Spanish, and Vietnamese



Other Ways to Engage

- ▶ Attend a virtual public meeting and/or provide input to the advisory groups
 - www.interstatebridge.org/calendar
- ▶ Sign up for email notifications on program updates and opportunities to engage
 - www.interstatebridge.org/contact
- ▶ For more information or to request a briefing for your organization, contact the IBR program team!
 - info@interstatebridge.org
 - 503-897-9218 (OR)
 - 360-859-0494 (WA)
 - 888-503-6735 (toll-free)



GET INVOLVED

Meetings & Events

Today ◀ ▶ February, 2021						
Sunday	Monday	Tuesday	Wednesday	Thursday	Friday	Saturday
31	01	02	03	04	05	06
07	08	09	10 CAG Feb...	11	12	13

Upcoming Meetings

Click link for more details include materials and online meeting links.

Audience Participation: Engagement

How do we meet our community where they are and listen to what is important?

- a) Host virtual or in-person events
- b) Use social media
- c) Provide access to team members (office hours)
- d) Seek input through surveys
- e) Other



Help shape the future! Visit our Online Open House until March 1, learn more about the IBR program, and provide your input in our interactive survey.

<https://meetings.interstatebridge.org/feb2021>

Find out more and contact us:
www.interstatebridge.org



Thank you!