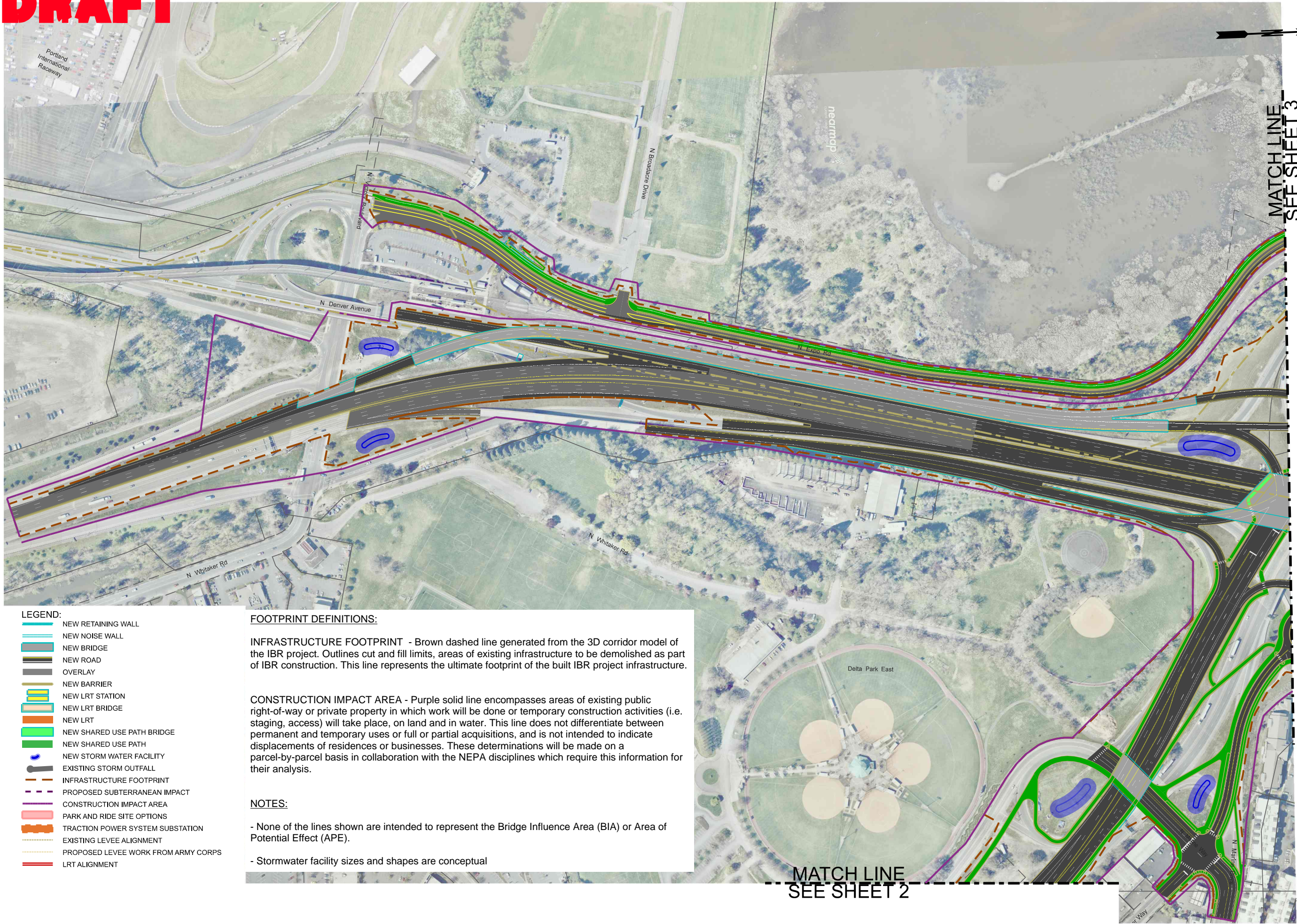


Appendix C

CONCEPTUAL DESIGN DRAWINGS

DRAFT



- LEGEND:
- NEW RETAINING WALL
 - NEW NOISE WALL
 - NEW BRIDGE
 - NEW ROAD
 - OVERLAY
 - NEW BARRIER
 - NEW LRT STATION
 - NEW LRT BRIDGE
 - NEW LRT
 - NEW SHARED USE PATH BRIDGE
 - NEW SHARED USE PATH
 - NEW STORM WATER FACILITY
 - EXISTING STORM OUTFALL
 - INFRASTRUCTURE FOOTPRINT
 - PROPOSED SUBTERRANEAN IMPACT
 - CONSTRUCTION IMPACT AREA
 - PARK AND RIDE SITE OPTIONS
 - TRACTION POWER SYSTEM SUBSTATION
 - EXISTING LEVEE ALIGNMENT
 - PROPOSED LEVEE WORK FROM ARMY CORPS
 - LRT ALIGNMENT

FOOTPRINT DEFINITIONS:

INFRASTRUCTURE FOOTPRINT - Brown dashed line generated from the 3D corridor model of the IBR project. Outlines cut and fill limits, areas of existing infrastructure to be demolished as part of IBR construction. This line represents the ultimate footprint of the built IBR project infrastructure.

CONSTRUCTION IMPACT AREA - Purple solid line encompasses areas of existing public right-of-way or private property in which work will be done or temporary construction activities (i.e. staging, access) will take place, on land and in water. This line does not differentiate between permanent and temporary uses or full or partial acquisitions, and is not intended to indicate displacements of residences or businesses. These determinations will be made on a parcel-by-parcel basis in collaboration with the NEPA disciplines which require this information for their analysis.

NOTES:

- None of the lines shown are intended to represent the Bridge Influence Area (BIA) or Area of Potential Effect (APE).

- Stormwater facility sizes and shapes are conceptual

DRAFT

- LEGEND:
- NEW RETAINING WALL
 - NEW NOISE WALL
 - NEW BRIDGE
 - NEW ROAD
 - OVERLAY
 - NEW BARRIER
 - NEW LRT STATION
 - NEW LRT BRIDGE
 - NEW LRT
 - NEW SHARED USE PATH BRIDGE
 - NEW SHARED USE PATH
 - NEW STORM WATER FACILITY
 - EXISTING STORM OUTFALL
 - INFRASTRUCTURE FOOTPRINT
 - PROPOSED SUBTERRANEAN IMPACT
 - CONSTRUCTION IMPACT AREA
 - PARK AND RIDE SITE OPTIONS
 - TRACTION POWER SYSTEM SUBSTATION
 - EXISTING LEVEE ALIGNMENT
 - PROPOSED LEVEE WORK FROM ARMY CORPS
 - LRT ALIGNMENT

FOOTPRINT DEFINITIONS:

INFRASTRUCTURE FOOTPRINT - Brown dashed line generated from the 3D corridor model of the IBR project. Outlines cut and fill limits, areas of existing infrastructure to be demolished as part of IBR construction. This line represents the ultimate footprint of the built IBR project infrastructure.

CONSTRUCTION IMPACT AREA - Purple solid line encompasses areas of existing public right-of-way or private property in which work will be done or temporary construction activities (i.e. staging, access) will take place, on land and in water. This line does not differentiate between permanent and temporary uses or full or partial acquisitions, and is not intended to indicate displacements of residences or businesses. These determinations will be made on a parcel-by-parcel basis in collaboration with the NEPA disciplines which require this information for their analysis.

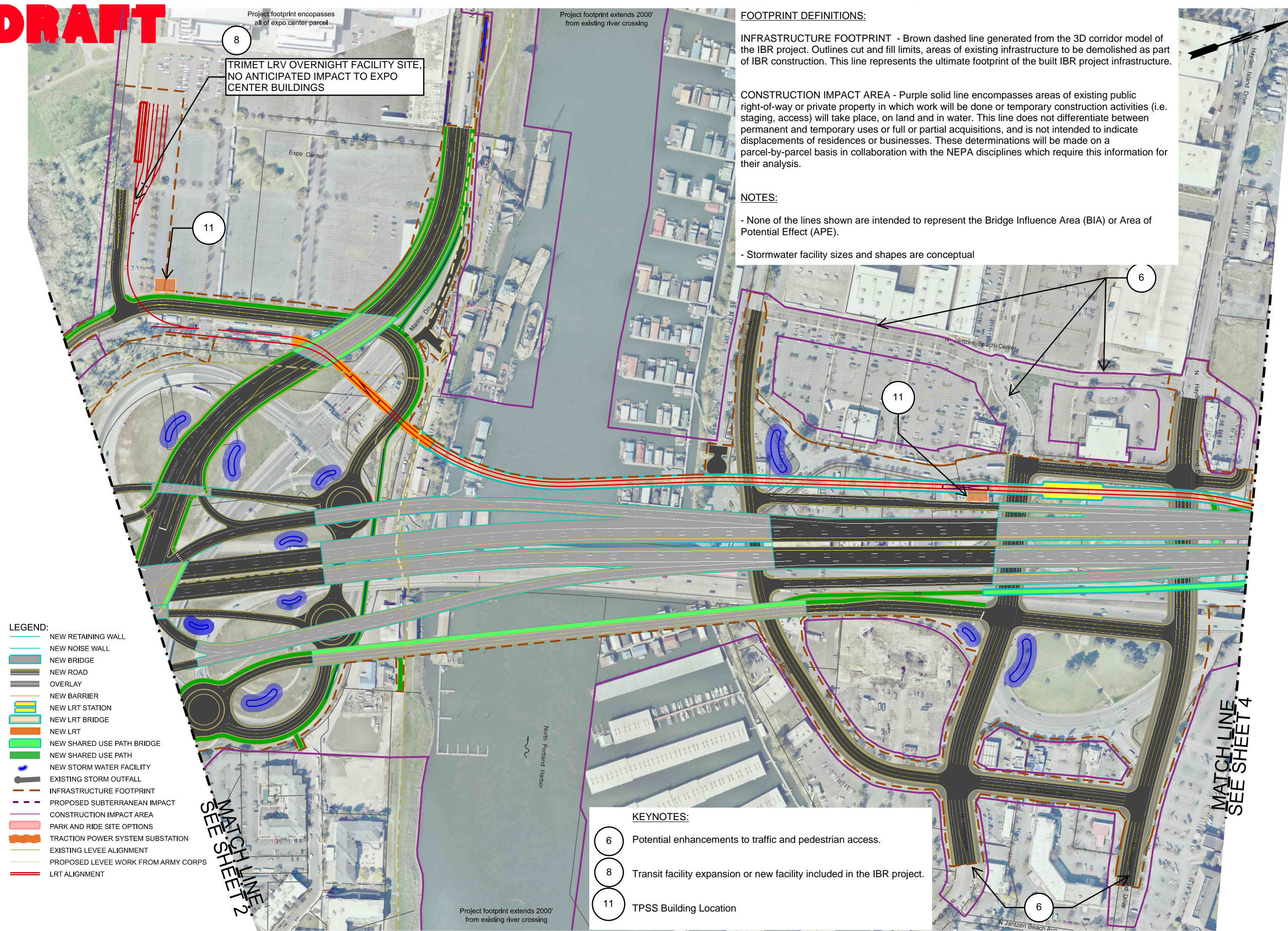
NOTES:

- None of the lines shown are intended to represent the Bridge Influence Area (BIA) or Area of Potential Effect (APE).
- Stormwater facility sizes and shapes are conceptual

KEYNOTES:

- 8 Transit facility expansion or new facility included in the IBR project. See vicinity map on key map sheet for location.

DRAFT



FOOTPRINT DEFINITIONS:

INFRASTRUCTURE FOOTPRINT - Brown dashed line generated from the 3D corridor model of the IBR project. Outlines cut and fill limits, areas of existing infrastructure to be demolished as part of IBR construction. This line represents the ultimate footprint of the built IBR project infrastructure.

CONSTRUCTION IMPACT AREA - Purple solid line encompasses areas of existing public right-of-way or private property in which work will be done or temporary construction activities (i.e. staging, access) will take place, on land and in water. This line does not differentiate between permanent and temporary uses or full or partial acquisitions, and is not intended to indicate displacements of residences or businesses. These determinations will be made on a parcel-by-parcel basis in collaboration with the NEPA disciplines which require this information for their analysis.

NOTES:

- None of the lines shown are intended to represent the Bridge Influence Area (BIA) or Area of Potential Effect (APE).
- Stormwater facility sizes and shapes are conceptual

KEYNOTES:

- | | |
|----|---|
| 6 | Potential enhancements to traffic and pedestrian access. |
| 8 | Transit facility expansion or new facility included in the IBR project. |
| 11 | TPSS Building Location |

INTERSTATE BRIDGE REPLACEMENT PROGRAM
1 AUX, DOUBLE DECK BRIDGE, WITH C STREET - JULY 10th 2023
SHEET 3 OF 8



DRAFT

FOOTPRINT DEFINITIONS:

INFRASTRUCTURE FOOTPRINT - Brown dashed line generated from the 3D corridor model of the IBR project. Outlines cut and fill limits, areas of existing infrastructure to be demolished as part of IBR construction. This line represents the ultimate footprint of the built IBR project infrastructure. CONSTRUCTION IMPACT AREA - Purple solid line encompasses areas of existing public right-of-way or private property in which work will be done or temporary construction activities (i.e. staging, access) will take place, on land and in water. This line does not differentiate between permanent and temporary uses or full or partial acquisitions, and is not intended to indicate displacements of residences or businesses. These determinations will be made on a parcel-by-parcel basis in collaboration with the NEPA disciplines which require this information for their analysis.

NOTES:

- None of the lines shown are intended to represent the Bridge Influence Area (BIA) or Area of Potential Effect (APE).
- Stormwater facility sizes and shapes are conceptual

MATCH LINE
SEE SHEET 3

- LEGEND:
- NEW RETAINING WALL
 - NEW NOISE WALL
 - NEW BRIDGE
 - NEW ROAD
 - OVERLAY
 - NEW BARRIER
 - NEW LRT STATION
 - NEW LRT BRIDGE
 - NEW LRT
 - NEW SHARED USE PATH BRIDGE
 - NEW SHARED USE PATH
 - NEW STORM WATER FACILITY
 - EXISTING STORM OUTFALL
 - INFRASTRUCTURE FOOTPRINT
 - PROPOSED SUBTERRANEAN IMPACT
 - CONSTRUCTION IMPACT AREA
 - PARK AND RIDE SITE OPTIONS
 - TRACTION POWER SYSTEM SUBSTATION
 - EXISTING LEVEE ALIGNMENT
 - PROPOSED LEVEE WORK FROM ARMY CORPS
 - LRT ALIGNMENT

KEYNOTES:

- 4 Park & Ride site options. One location would be constructed but all should be studied.
- 9 Potential staging area. Not all potential staging areas are identified.

- 10 In-water staging/work areas.
~1000' upstream of existing Interstate Bridge and ~1000' downstream of new Interstate Bridge.
~2000' upstream and downstream of new North Portland Harbor Bridges.

DRAFT

FOOTPRINT DEFINITIONS:

INFRASTRUCTURE FOOTPRINT - Brown dashed line generated from the 3D corridor model of the IBR project. Outlines cut and fill limits, areas of existing infrastructure to be demolished as part of IBR construction. This line represents the ultimate footprint of the built IBR project infrastructure.

CONSTRUCTION IMPACT AREA - Purple solid line encompasses areas of existing public right-of-way or private property in which work will be done or temporary construction activities (i.e. staging, access) will take place, on land and in water. This line does not differentiate between permanent and temporary uses or full or partial acquisitions, and is not intended to indicate displacements of residences or businesses. These determinations will be made on a parcel-by-parcel basis in collaboration with the NEPA disciplines which require this information for their analysis.

NOTES:

- None of the lines shown are intended to represent the Bridge Influence Area (BIA) or Area of Potential Effect (APE).
- Stormwater facility sizes and shapes are conceptual

LEGEND:

- NEW RETAINING WALL
- NEW NOISE WALL
- NEW BRIDGE
- NEW ROAD
- OVERLAY
- NEW BARRIER
- NEW LRT STATION
- NEW LRT BRIDGE
- NEW LRT
- NEW SHARED USE PATH BRIDGE
- NEW SHARED USE PATH
- NEW STORM WATER FACILITY
- EXISTING STORM OUTFALL
- INFRASTRUCTURE FOOTPRINT
- PROPOSED SUBTERRANEAN IMPACT
- CONSTRUCTION IMPACT AREA
- PARK AND RIDE SITE OPTIONS
- TRACTION POWER SYSTEM SUBSTATION
- EXISTING LEVEE ALIGNMENT
- PROPOSED LEVEE WORK FROM ARMY CORPS
- LRT ALIGNMENT

DOWNTOWN VANCOUVER PARK & RIDE SITE OPTIONS (2):
- LIBRARY SQUARE SITE WOULD BE JOINT DEVELOPMENT
- BROADWAY AND 7TH WOULD BE JOINT USE OF EXISTING PARKING FACILITY

EVERGREEN LRT STATION IS AT-GRADE WITH EVERGREEN BLVD AND THE COMMUNITY CONNECTOR.

KEYNOTES:

- 3 See 1 Aux with westward shift without C street Graphics for alternate design which does not include C Street Ramps at the SR 14 interchange and shifts I-5 mainline to the west.
- 4 Park & Ride site options. One location would be constructed but all should be studied.
- 5 Potential enhancements to support access to transit.
- 6 Potential enhancements to traffic and pedestrian access.
- 11 TPSS Building Location

DRAFT

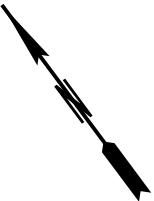
FOOTPRINT DEFINITIONS:

INFRASTRUCTURE FOOTPRINT - Brown dashed line generated from the 3D corridor model of the IBR project. Outlines cut and fill limits, areas of existing infrastructure to be demolished as part of IBR construction. This line represents the ultimate footprint of the built IBR project infrastructure.

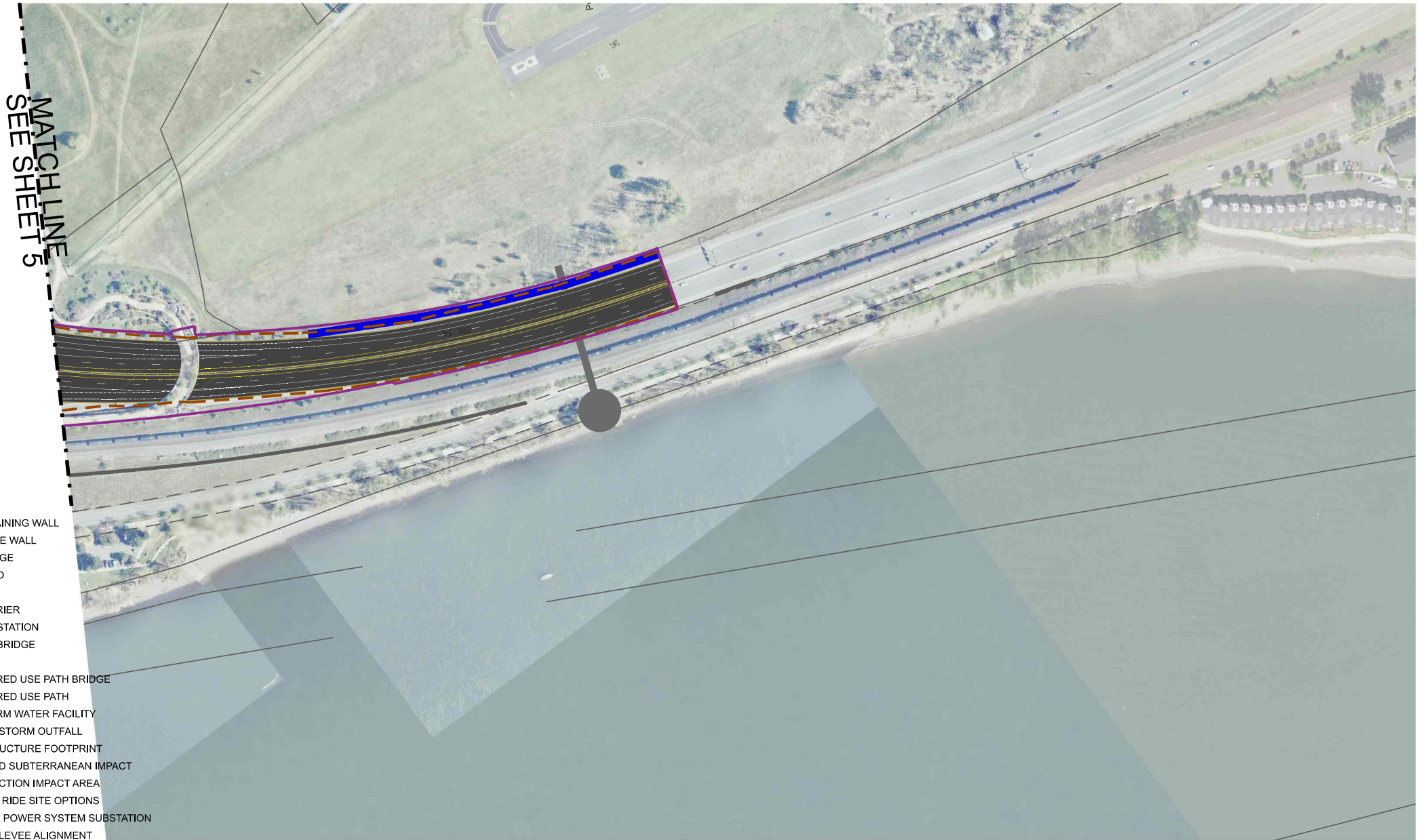
CONSTRUCTION IMPACT AREA - Purple solid line encompasses areas of existing public right-of-way or private property in which work will be done or temporary construction activities (i.e. staging, access) will take place, on land and in water. This line does not differentiate between permanent and temporary uses or full or partial acquisitions, and is not intended to indicate displacements of residences or businesses. These determinations will be made on a parcel-by-parcel basis in collaboration with the NEPA disciplines which require this information for their analysis.

NOTES:

- None of the lines shown are intended to represent the Bridge Influence Area (BIA) or Area of Potential Effect (APE).
- Stormwater facility sizes and shapes are conceptual



- LEGEND:
- NEW RETAINING WALL
 - NEW NOISE WALL
 - NEW BRIDGE
 - NEW ROAD
 - OVERLAY
 - NEW BARRIER
 - NEW LRT STATION
 - NEW LRT BRIDGE
 - NEW LRT
 - NEW SHARED USE PATH BRIDGE
 - NEW SHARED USE PATH
 - NEW STORM WATER FACILITY
 - EXISTING STORM OUTFALL
 - INFRASTRUCTURE FOOTPRINT
 - PROPOSED SUBTERRANEAN IMPACT
 - CONSTRUCTION IMPACT AREA
 - PARK AND RIDE SITE OPTIONS
 - TRACTION POWER SYSTEM SUBSTATION
 - EXISTING LEVEE ALIGNMENT
 - PROPOSED LEVEE WORK FROM ARMY CORPS
 - LRT ALIGNMENT



DRAFT

FOOTPRINT DEFINITIONS:

INFRASTRUCTURE FOOTPRINT - Brown dashed line generated from the 3D corridor model of the IBR project. Outlines cut and fill limits, areas of existing infrastructure to be demolished as part of IBR construction. This line represents the ultimate footprint of the built IBR project infrastructure.

CONSTRUCTION IMPACT AREA - Purple solid line encompasses areas of existing public right-of-way or private property in which work will be done or temporary construction activities (i.e. staging, access) will take place, on land and in water. This line does not differentiate between permanent and temporary uses or full or partial acquisitions, and is not intended to indicate displacements of residences or businesses. These determinations will be made on a parcel-by-parcel basis in collaboration with the NEPA disciplines which require this information for their analysis.

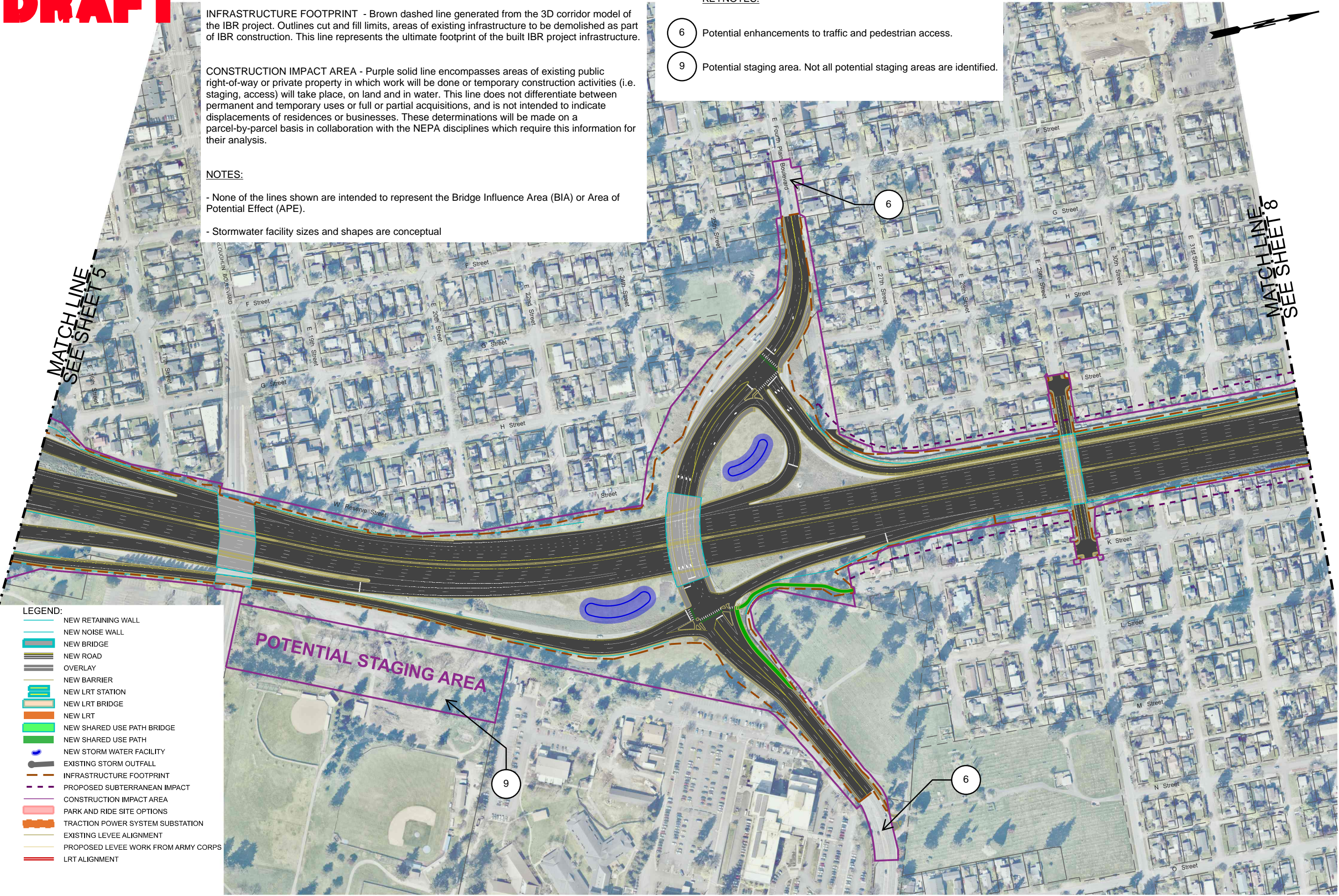
NOTES:

- None of the lines shown are intended to represent the Bridge Influence Area (BIA) or Area of Potential Effect (APE).

- Stormwater facility sizes and shapes are conceptual

KEYNOTES:

- 6 Potential enhancements to traffic and pedestrian access.
- 9 Potential staging area. Not all potential staging areas are identified.



DRAFT

FOOTPRINT DEFINITIONS:

INFRASTRUCTURE FOOTPRINT - Brown dashed line generated from the 3D corridor model of the IBR project. Outlines cut and fill limits, areas of existing infrastructure to be demolished as part of IBR construction. This line represents the ultimate footprint of the built IBR project infrastructure.

CONSTRUCTION IMPACT AREA - Purple solid line encompasses areas of existing public right-of-way or private property in which work will be done or temporary construction activities (i.e. staging, access) will take place, on land and in water. This line does not differentiate between permanent and temporary uses or full or partial acquisitions, and is not intended to indicate displacements of residences or businesses. These determinations will be made on a parcel-by-parcel basis in collaboration with the NEPA disciplines which require this information for their analysis.

NOTES:

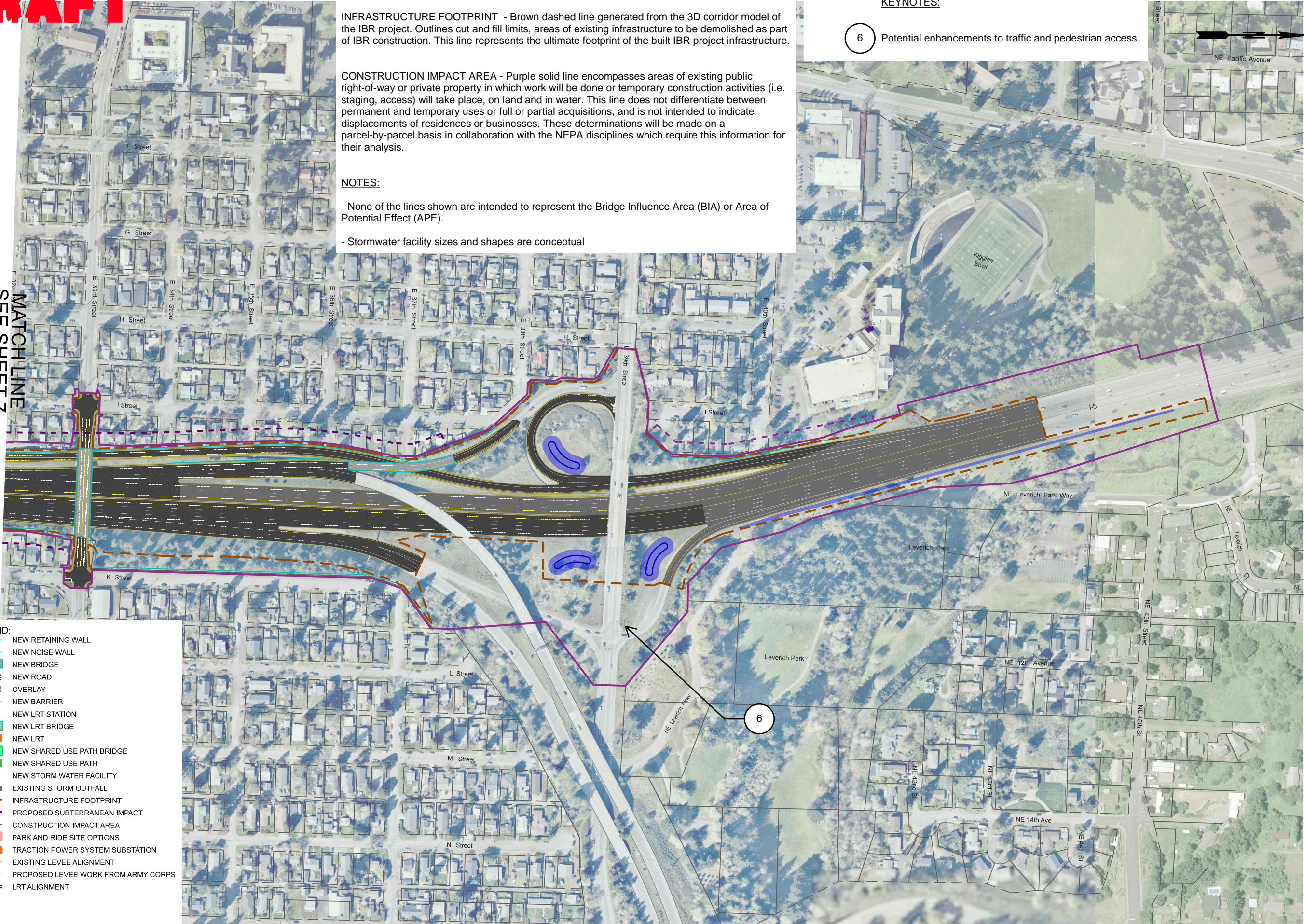
- None of the lines shown are intended to represent the Bridge Influence Area (BIA) or Area of Potential Effect (APE).
- Stormwater facility sizes and shapes are conceptual

KEYNOTES:

- 6 Potential enhancements to traffic and pedestrian access.

MATCH LINE
SEE SHEET 7

- LEGEND:
- NEW RETAINING WALL
 - NEW NOISE WALL
 - NEW BRIDGE
 - NEW ROAD
 - OVERLAY
 - NEW BARRIER
 - NEW LRT STATION
 - NEW LRT BRIDGE
 - NEW LRT
 - NEW SHARED USE PATH BRIDGE
 - NEW SHARED USE PATH
 - NEW STORM WATER FACILITY
 - EXISTING STORM OUTFALL
 - INFRASTRUCTURE FOOTPRINT
 - PROPOSED SUBTERRANEAN IMPACT
 - CONSTRUCTION IMPACT AREA
 - PARK AND RIDE SITE OPTIONS
 - TRACTION POWER SYSTEM SUBSTATION
 - EXISTING LEVEE ALIGNMENT
 - PROPOSED LEVEE WORK FROM ARMY CORPS
 - LRT ALIGNMENT



DRAFT

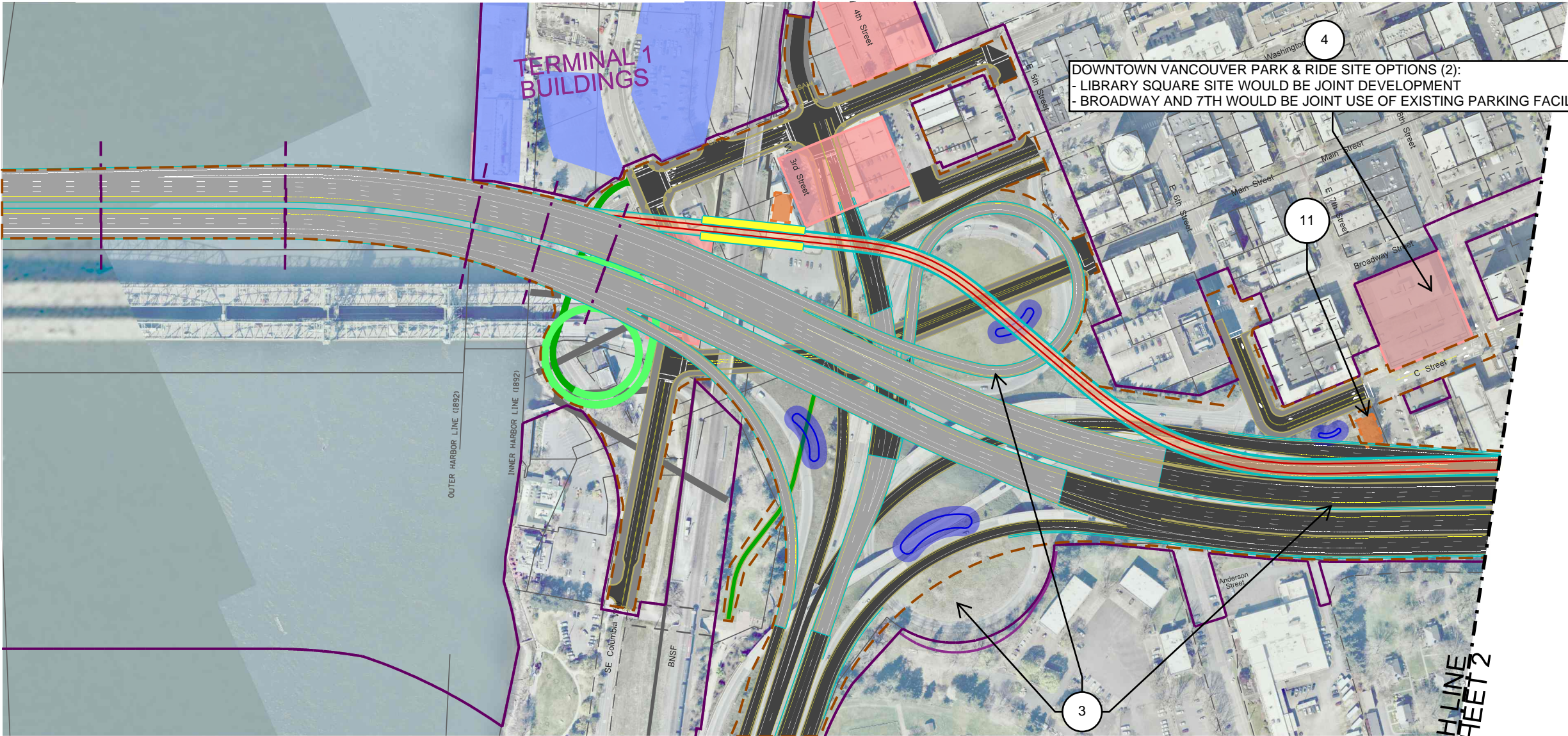
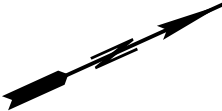
FOOTPRINT DEFINITIONS:

INFRASTRUCTURE FOOTPRINT - Brown dashed line generated from the 3D corridor model of the IBR project. Outlines cut and fill limits, areas of existing infrastructure to be demolished as part of IBR construction. This line represents the ultimate footprint of the built IBR project infrastructure.

CONSTRUCTION IMPACT AREA - Purple solid line encompasses areas of existing public right-of-way or private property in which work will be done or temporary construction activities (i.e. staging, access) will take place, on land and in water. This line does not differentiate between permanent and temporary uses or full or partial acquisitions, and is not intended to indicate displacements of residences or businesses. These determinations will be made on a parcel-by-parcel basis in collaboration with the NEPA disciplines which require this information for their analysis.

NOTES:

- None of the lines shown are intended to represent the Bridge Influence Area (BIA) or Area of Potential Effect (APE).
- Stormwater facility sizes and shapes are conceptual



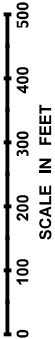
- LEGEND:
- NEW RETAINING WALL
 - NEW NOISE WALL
 - NEW BRIDGE
 - NEW ROAD
 - OVERLAY
 - NEW BARRIER
 - NEW LRT STATION
 - NEW LRT BRIDGE
 - NEW LRT
 - NEW SHARED USE PATH BRIDGE
 - NEW SHARED USE PATH
 - NEW STORM WATER FACILITY
 - EXISTING STORM OUTFALL
 - INFRASTRUCTURE FOOTPRINT
 - PROPOSED SUBTERRANEAN IMPACT
 - CONSTRUCTION IMPACT AREA
 - PARK AND RIDE SITE OPTIONS
 - TRACTION POWER SYSTEM SUBSTATION
 - EXISTING LEVEE ALIGNMENT
 - PROPOSED LEVEE WORK FROM ARMY CORPS
 - LRT ALIGNMENT

KEYNOTES:

- 3 See 2 Aux, Double Deck With C Street Graphics for alternate design
- 4 Park & Ride site options. One location would be constructed but all should be studied.
- 11 TPSS Building Location

DOWNTOWN VANCOUVER PARK & RIDE SITE OPTIONS (2):
- LIBRARY SQUARE SITE WOULD BE JOINT DEVELOPMENT
- BROADWAY AND 7TH WOULD BE JOINT USE OF EXISTING PARKING FACILITY

MATCH LINE
SEE SHEET 2



DRAFT

FOOTPRINT DEFINITIONS:

INFRASTRUCTURE FOOTPRINT - Brown dashed line generated from the 3D corridor model of the IBR project. Outlines cut and fill limits, areas of existing infrastructure to be demolished as part of IBR construction. This line represents the ultimate footprint of the built IBR project infrastructure.

CONSTRUCTION IMPACT AREA - Purple solid line encompasses areas of existing public right-of-way or private property in which work will be done or temporary construction activities (i.e. staging, access) will take place, on land and in water. This line does not differentiate between permanent and temporary uses or full or partial acquisitions, and is not intended to indicate displacements of residences or businesses. These determinations will be made on a parcel-by-parcel basis in collaboration with the NEPA disciplines which require this information for their analysis.

NOTES:

- None of the lines shown are intended to represent the Bridge Influence Area (BIA) or Area of Potential Effect (APE).
- Stormwater facility sizes and shapes are conceptual



4
DOWNTOWN VANCOUVER PARK & RIDE SITE OPTIONS (2):
- LIBRARY SQUARE SITE WOULD BE JOINT DEVELOPMENT
- BROADWAY AND 7TH WOULD BE JOINT USE OF EXISTING PARKING FACILITY

5
EVERGREEN LRT STATION IS AT-GRADE WITH EVERGREEN BLVD AND THE COMMUNITY CONNECTOR.

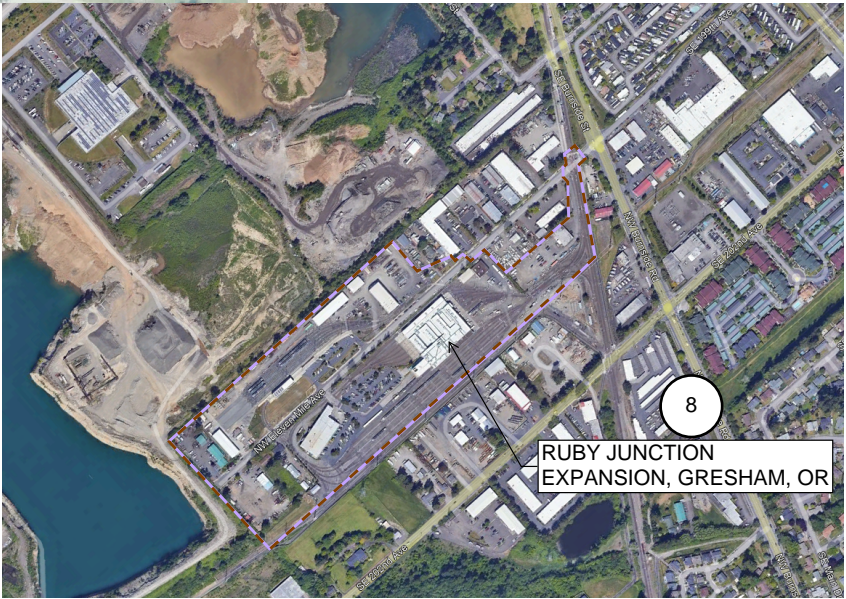
6

- LEGEND:
- NEW RETAINING WALL
 - NEW NOISE WALL
 - NEW BRIDGE
 - NEW ROAD
 - OVERLAY
 - NEW BARRIER
 - NEW LRT STATION
 - NEW LRT BRIDGE
 - NEW LRT
 - NEW SHARED USE PATH BRIDGE
 - NEW SHARED USE PATH
 - NEW STORM WATER FACILITY
 - EXISTING STORM OUTFALL
 - INFRASTRUCTURE FOOTPRINT
 - PROPOSED SUBTERRANEAN IMPACT
 - CONSTRUCTION IMPACT AREA
 - PARK AND RIDE SITE OPTIONS
 - TRACTION POWER SYSTEM SUBSTATION
 - EXISTING LEVEE ALIGNMENT
 - PROPOSED LEVEE WORK FROM ARMY CORPS
 - LRT ALIGNMENT

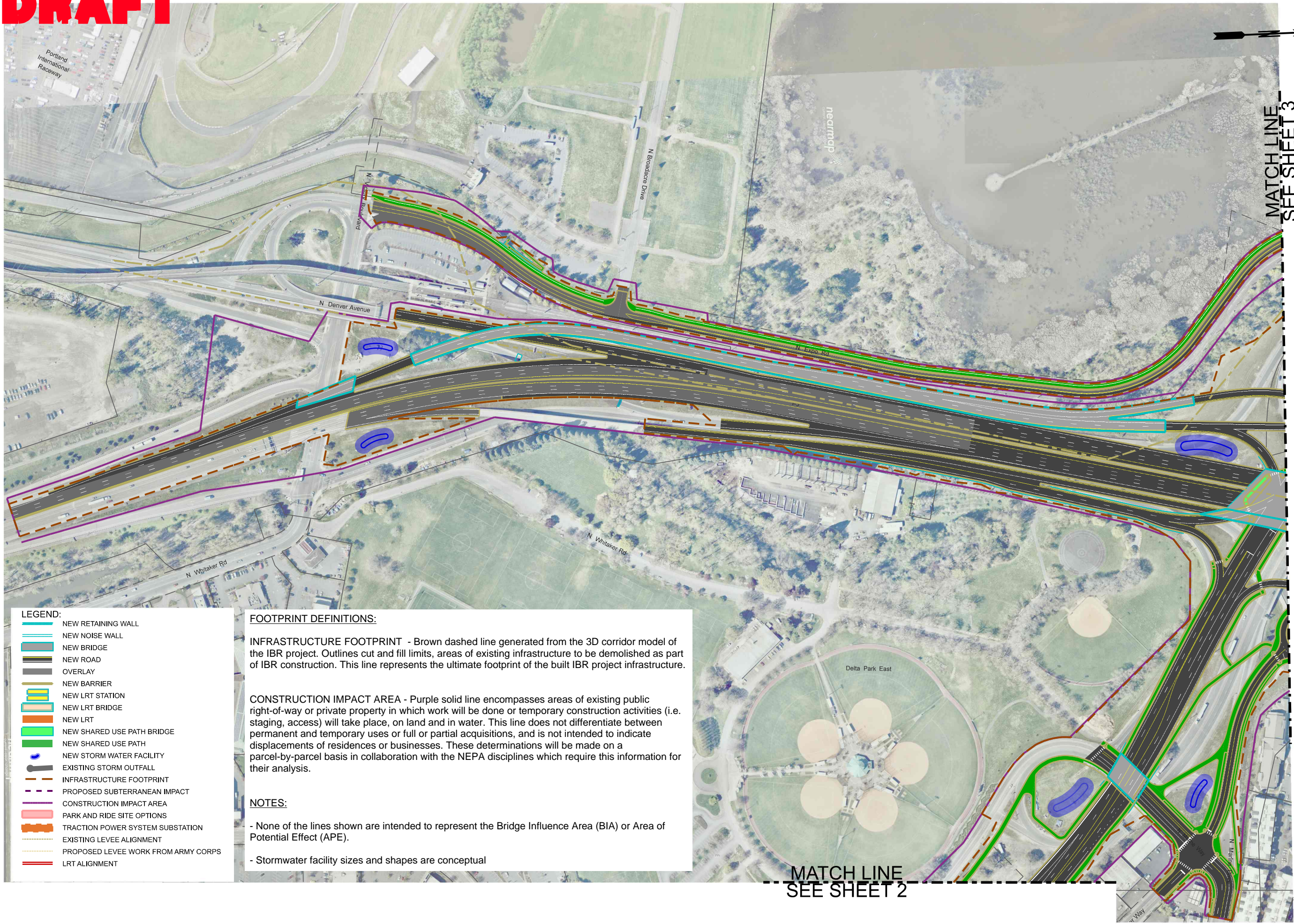
MATCH LINE
SEE SHEET 1

KEYNOTES:

- 4 Park & Ride site options. One location would be constructed but all should be studied.
- 5 Potential enhancements to support access to transit.
- 6 Potential enhancements to traffic and pedestrian access.
- 8 Transit facility expansion or new facility included in the IBR project. See vicinity map on key map sheet for location.



DRAFT



DRAFT

- LEGEND:
- NEW RETAINING WALL
 - NEW NOISE WALL
 - NEW BRIDGE
 - NEW ROAD
 - OVERLAY
 - NEW BARRIER
 - NEW LRT STATION
 - NEW LRT BRIDGE
 - NEW LRT
 - NEW SHARED USE PATH BRIDGE
 - NEW SHARED USE PATH
 - NEW STORM WATER FACILITY
 - EXISTING STORM OUTFALL
 - INFRASTRUCTURE FOOTPRINT
 - PROPOSED SUBTERRANEAN IMPACT
 - CONSTRUCTION IMPACT AREA
 - PARK AND RIDE SITE OPTIONS
 - TRACTION POWER SYSTEM SUBSTATION
 - EXISTING LEVEE ALIGNMENT
 - PROPOSED LEVEE WORK FROM ARMY CORPS
 - LRT ALIGNMENT

FOOTPRINT DEFINITIONS:

INFRASTRUCTURE FOOTPRINT - Brown dashed line generated from the 3D corridor model of the IBR project. Outlines cut and fill limits, areas of existing infrastructure to be demolished as part of IBR construction. This line represents the ultimate footprint of the built IBR project infrastructure.

CONSTRUCTION IMPACT AREA - Purple solid line encompasses areas of existing public right-of-way or private property in which work will be done or temporary construction activities (i.e. staging, access) will take place, on land and in water. This line does not differentiate between permanent and temporary uses or full or partial acquisitions, and is not intended to indicate displacements of residences or businesses. These determinations will be made on a parcel-by-parcel basis in collaboration with the NEPA disciplines which require this information for their analysis.

NOTES:

- None of the lines shown are intended to represent the Bridge Influence Area (BIA) or Area of Potential Effect (APE).
- Stormwater facility sizes and shapes are conceptual

KEYNOTES:

- 8 Transit facility expansion or new facility included in the IBR project. See vicinity map on key map sheet for location.

DRAFT

Project footprint encompasses all of expo center parcel

Project footprint extends 2000' from existing river crossing

TRIMET LRV OVERNIGHT FACILITY SITE, NO ANTICIPATED IMPACT TO EXPO CENTER BUILDINGS

FOOTPRINT DEFINITIONS:

INFRASTRUCTURE FOOTPRINT - Brown dashed line generated from the 3D corridor model of the IBR project. Outlines cut and fill limits, areas of existing infrastructure to be demolished as part of IBR construction. This line represents the ultimate footprint of the built IBR project infrastructure.

CONSTRUCTION IMPACT AREA - Purple solid line encompasses areas of existing public right-of-way or private property in which work will be done or temporary construction activities (i.e. staging, access) will take place, on land and in water. This line does not differentiate between permanent and temporary uses or full or partial acquisitions, and is not intended to indicate displacements of residences or businesses. These determinations will be made on a parcel-by-parcel basis in collaboration with the NEPA disciplines which require this information for their analysis.

NOTES:

- None of the lines shown are intended to represent the Bridge Influence Area (BIA) or Area of Potential Effect (APE).
- Stormwater facility sizes and shapes are conceptual

LEGEND:

- NEW RETAINING WALL
- NEW NOISE WALL
- NEW BRIDGE
- NEW ROAD
- OVERLAY
- NEW BARRIER
- NEW LRT STATION
- NEW LRT BRIDGE
- NEW LRT
- NEW SHARED USE PATH BRIDGE
- NEW SHARED USE PATH
- NEW STORM WATER FACILITY
- EXISTING STORM OUTFALL
- INFRASTRUCTURE FOOTPRINT
- PROPOSED SUBTERRANEAN IMPACT
- CONSTRUCTION IMPACT AREA
- PARK AND RIDE SITE OPTIONS
- TRACTION POWER SYSTEM SUBSTATION
- EXISTING LEVEE ALIGNMENT
- PROPOSED LEVEE WORK FROM ARMY CORPS
- LRT ALIGNMENT

KEYNOTES:

- 6 Potential enhancements to traffic and pedestrian access.
- 8 Transit facility expansion or new facility included in the IBR project.
- 11 TPSS Building Location

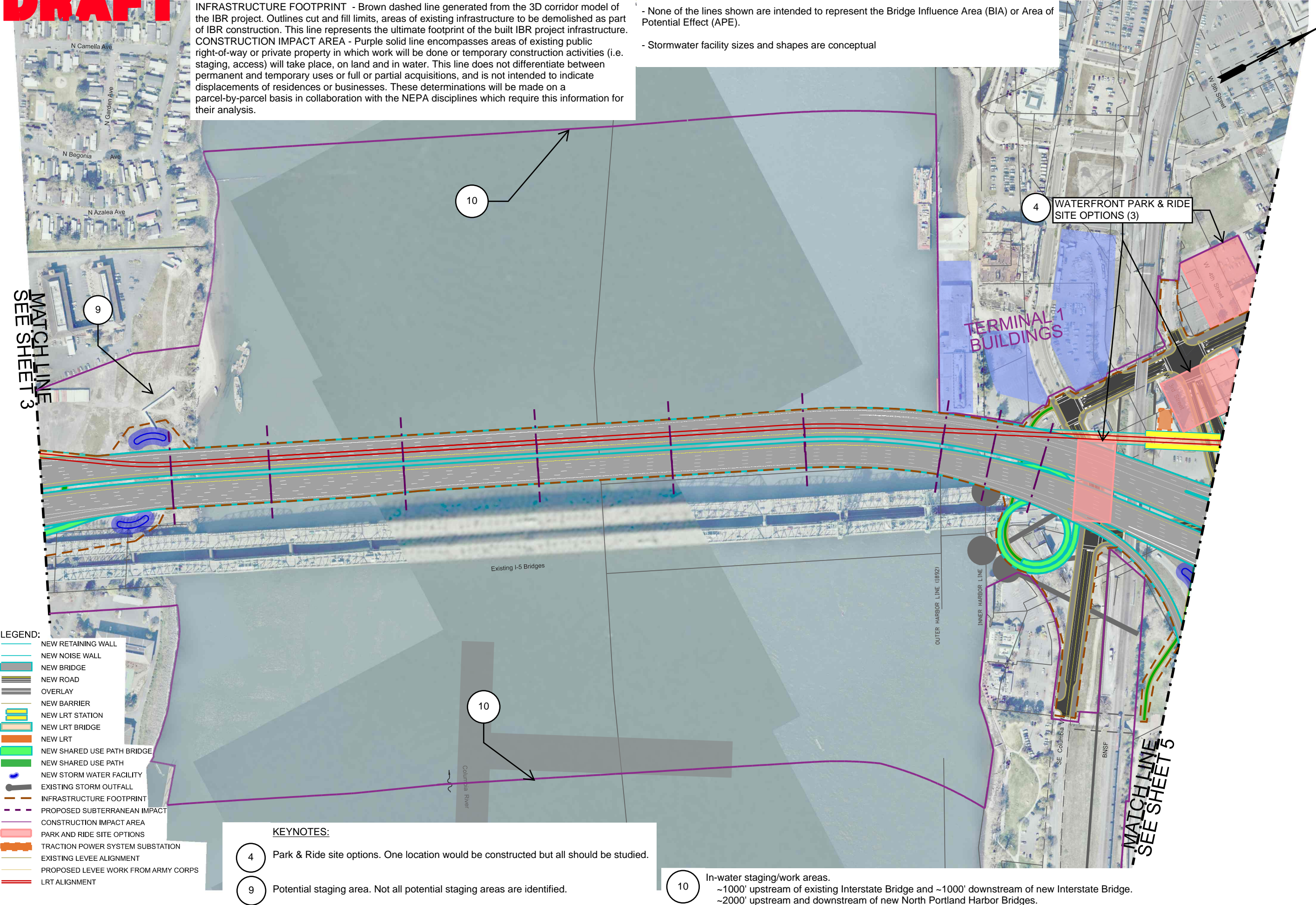
DRAFT

FOOTPRINT DEFINITIONS:

INFRASTRUCTURE FOOTPRINT - Brown dashed line generated from the 3D corridor model of the IBR project. Outlines cut and fill limits, areas of existing infrastructure to be demolished as part of IBR construction. This line represents the ultimate footprint of the built IBR project infrastructure. CONSTRUCTION IMPACT AREA - Purple solid line encompasses areas of existing public right-of-way or private property in which work will be done or temporary construction activities (i.e. staging, access) will take place, on land and in water. This line does not differentiate between permanent and temporary uses or full or partial acquisitions, and is not intended to indicate displacements of residences or businesses. These determinations will be made on a parcel-by-parcel basis in collaboration with the NEPA disciplines which require this information for their analysis.

NOTES:

- None of the lines shown are intended to represent the Bridge Influence Area (BIA) or Area of Potential Effect (APE).
- Stormwater facility sizes and shapes are conceptual



DRAFT

FOOTPRINT DEFINITIONS:

INFRASTRUCTURE FOOTPRINT - Brown dashed line generated from the 3D corridor model of the IBR project. Outlines cut and fill limits, areas of existing infrastructure to be demolished as part of IBR construction. This line represents the ultimate footprint of the built IBR project infrastructure.

CONSTRUCTION IMPACT AREA - Purple solid line encompasses areas of existing public right-of-way or private property in which work will be done or temporary construction activities (i.e. staging, access) will take place, on land and in water. This line does not differentiate between permanent and temporary uses or full or partial acquisitions, and is not intended to indicate displacements of residences or businesses. These determinations will be made on a parcel-by-parcel basis in collaboration with the NEPA disciplines which require this information for their analysis.

NOTES:

- None of the lines shown are intended to represent the Bridge Influence Area (BIA) or Area of Potential Effect (APE).
- Stormwater facility sizes and shapes are conceptual

LEGEND:

- NEW RETAINING WALL
- NEW NOISE WALL
- NEW BRIDGE
- NEW ROAD
- OVERLAY
- NEW BARRIER
- NEW LRT STATION
- NEW LRT BRIDGE
- NEW LRT
- NEW SHARED USE PATH BRIDGE
- NEW SHARED USE PATH
- NEW STORM WATER FACILITY
- EXISTING STORM OUTFALL
- INFRASTRUCTURE FOOTPRINT
- PROPOSED SUBTERRANEAN IMPACT
- CONSTRUCTION IMPACT AREA
- PARK AND RIDE SITE OPTIONS
- TRACTION POWER SYSTEM SUBSTATION
- EXISTING LEVEE ALIGNMENT
- PROPOSED LEVEE WORK FROM ARMY CORPS
- LRT ALIGNMENT

DOWNTOWN VANCOUVER PARK & RIDE SITE OPTIONS (2):
- LIBRARY SQUARE SITE WOULD BE JOINT DEVELOPMENT
- BROADWAY AND 7TH WOULD BE JOINT USE OF EXISTING PARKING FACILITY

EVERGREEN LRT STATION IS AT-GRADE WITH EVERGREEN BLVD AND THE COMMUNITY CONNECTOR.

KEYNOTES:

- 3 See 2 Aux Double Deck Without C Street W Westward Shift Graphics for alternate design which does not include C Street Ramps at the SR 14 interchange and shifts I-5 mainline to the west.
- 4 Park & Ride site options. One location would be constructed but all should be studied.
- 5 Potential enhancements to support access to transit.
- 6 Potential enhancements to traffic and pedestrian access.
- 11 TPSS Building Location

DRAFT

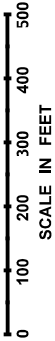
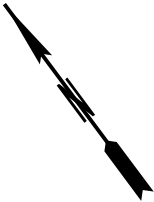
FOOTPRINT DEFINITIONS:

INFRASTRUCTURE FOOTPRINT - Brown dashed line generated from the 3D corridor model of the IBR project. Outlines cut and fill limits, areas of existing infrastructure to be demolished as part of IBR construction. This line represents the ultimate footprint of the built IBR project infrastructure.

CONSTRUCTION IMPACT AREA - Purple solid line encompasses areas of existing public right-of-way or private property in which work will be done or temporary construction activities (i.e. staging, access) will take place, on land and in water. This line does not differentiate between permanent and temporary uses or full or partial acquisitions, and is not intended to indicate displacements of residences or businesses. These determinations will be made on a parcel-by-parcel basis in collaboration with the NEPA disciplines which require this information for their analysis.

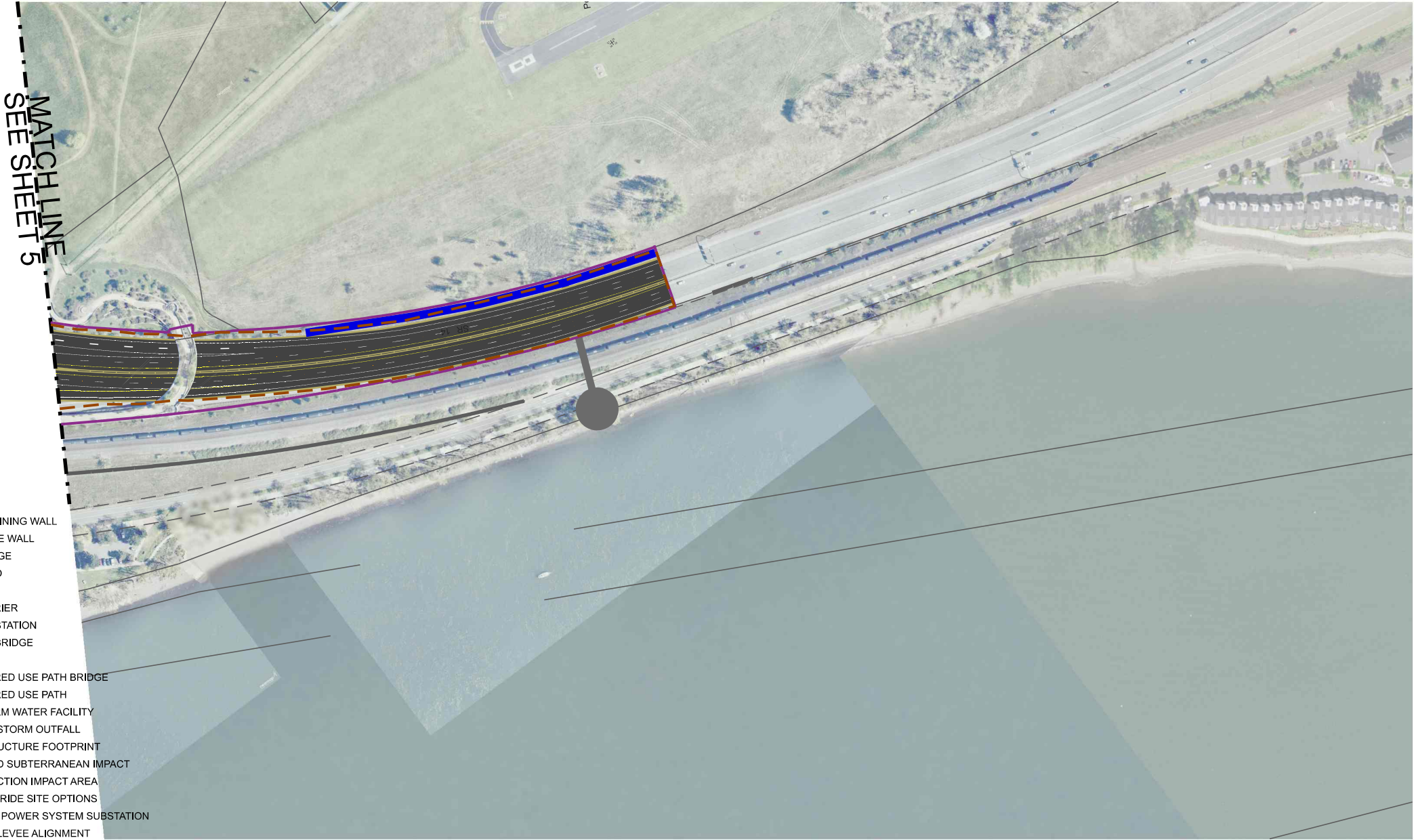
NOTES:

- None of the lines shown are intended to represent the Bridge Influence Area (BIA) or Area of Potential Effect (APE).
- Stormwater facility sizes and shapes are conceptual



INTERSTATE BRIDGE REPLACEMENT PROGRAM
2 AUX, DOUBLE DECK BRIDGE, WITH C STREET - JULY 10th 2023
SHEET 6 OF 8

- LEGEND:
- NEW RETAINING WALL
 - NEW NOISE WALL
 - NEW BRIDGE
 - NEW ROAD
 - OVERLAY
 - NEW BARRIER
 - NEW LRT STATION
 - NEW LRT BRIDGE
 - NEW LRT
 - NEW SHARED USE PATH BRIDGE
 - NEW SHARED USE PATH
 - NEW STORM WATER FACILITY
 - EXISTING STORM OUTFALL
 - INFRASTRUCTURE FOOTPRINT
 - PROPOSED SUBTERRANEAN IMPACT
 - CONSTRUCTION IMPACT AREA
 - PARK AND RIDE SITE OPTIONS
 - TRACTION POWER SYSTEM SUBSTATION
 - EXISTING LEVEE ALIGNMENT
 - PROPOSED LEVEE WORK FROM ARMY CORPS
 - LRT ALIGNMENT



DRAFT

FOOTPRINT DEFINITIONS:

INFRASTRUCTURE FOOTPRINT - Brown dashed line generated from the 3D corridor model of the IBR project. Outlines cut and fill limits, areas of existing infrastructure to be demolished as part of IBR construction. This line represents the ultimate footprint of the built IBR project infrastructure.

CONSTRUCTION IMPACT AREA - Purple solid line encompasses areas of existing public right-of-way or private property in which work will be done or temporary construction activities (i.e. staging, access) will take place, on land and in water. This line does not differentiate between permanent and temporary uses or full or partial acquisitions, and is not intended to indicate displacements of residences or businesses. These determinations will be made on a parcel-by-parcel basis in collaboration with the NEPA disciplines which require this information for their analysis.

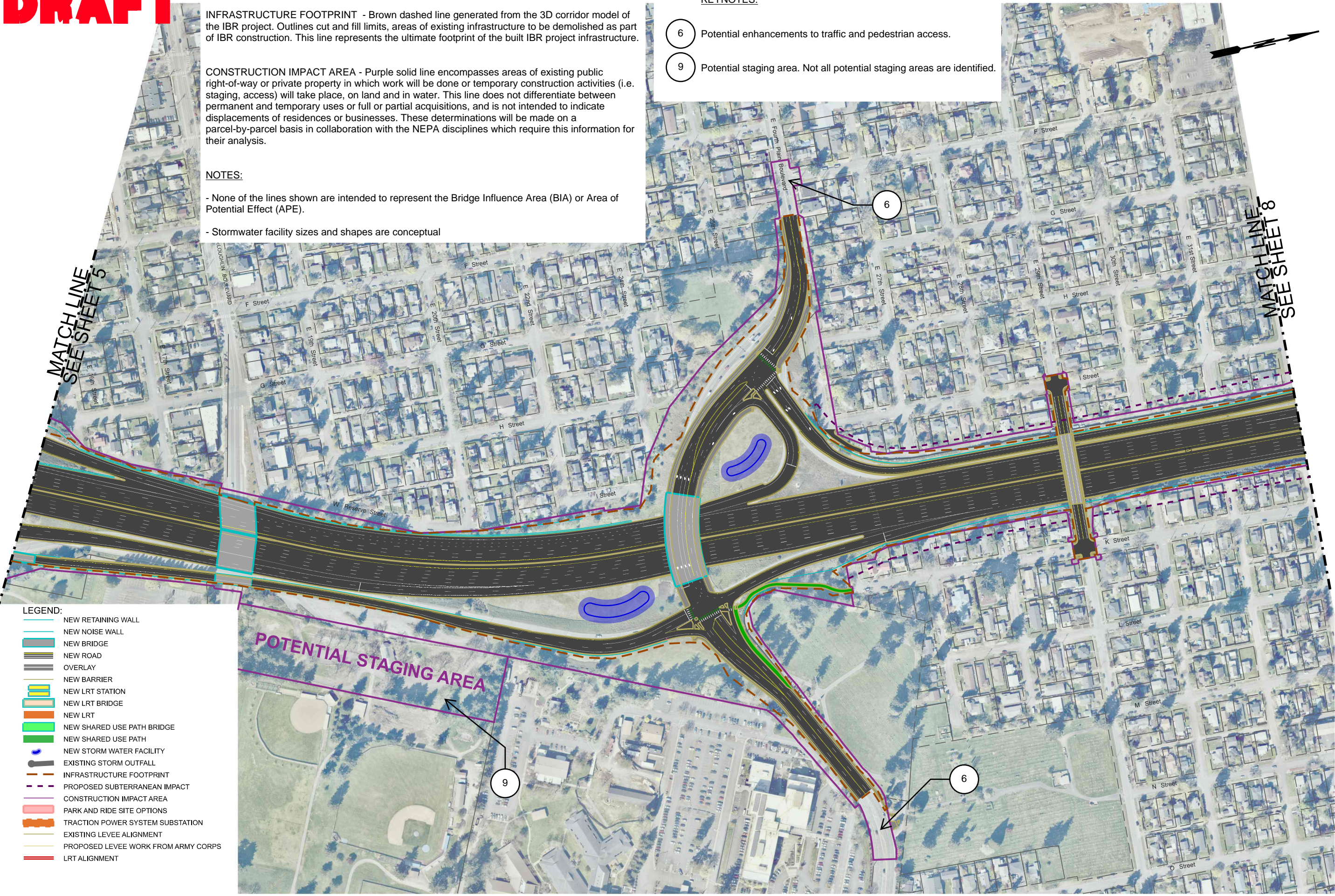
NOTES:

- None of the lines shown are intended to represent the Bridge Influence Area (BIA) or Area of Potential Effect (APE).

- Stormwater facility sizes and shapes are conceptual

KEYNOTES:

- 6
- Potential enhancements to traffic and pedestrian access.
- 9
- Potential staging area. Not all potential staging areas are identified.



DRAFT

FOOTPRINT DEFINITIONS:

INFRASTRUCTURE FOOTPRINT - Brown dashed line generated from the 3D corridor model of the IBR project. Outlines cut and fill limits, areas of existing infrastructure to be demolished as part of IBR construction. This line represents the ultimate footprint of the built IBR project infrastructure.

CONSTRUCTION IMPACT AREA - Purple solid line encompasses areas of existing public right-of-way or private property in which work will be done or temporary construction activities (i.e. staging, access) will take place, on land and in water. This line does not differentiate between permanent and temporary uses or full or partial acquisitions, and is not intended to indicate displacements of residences or businesses. These determinations will be made on a parcel-by-parcel basis in collaboration with the NEPA disciplines which require this information for their analysis.

NOTES:

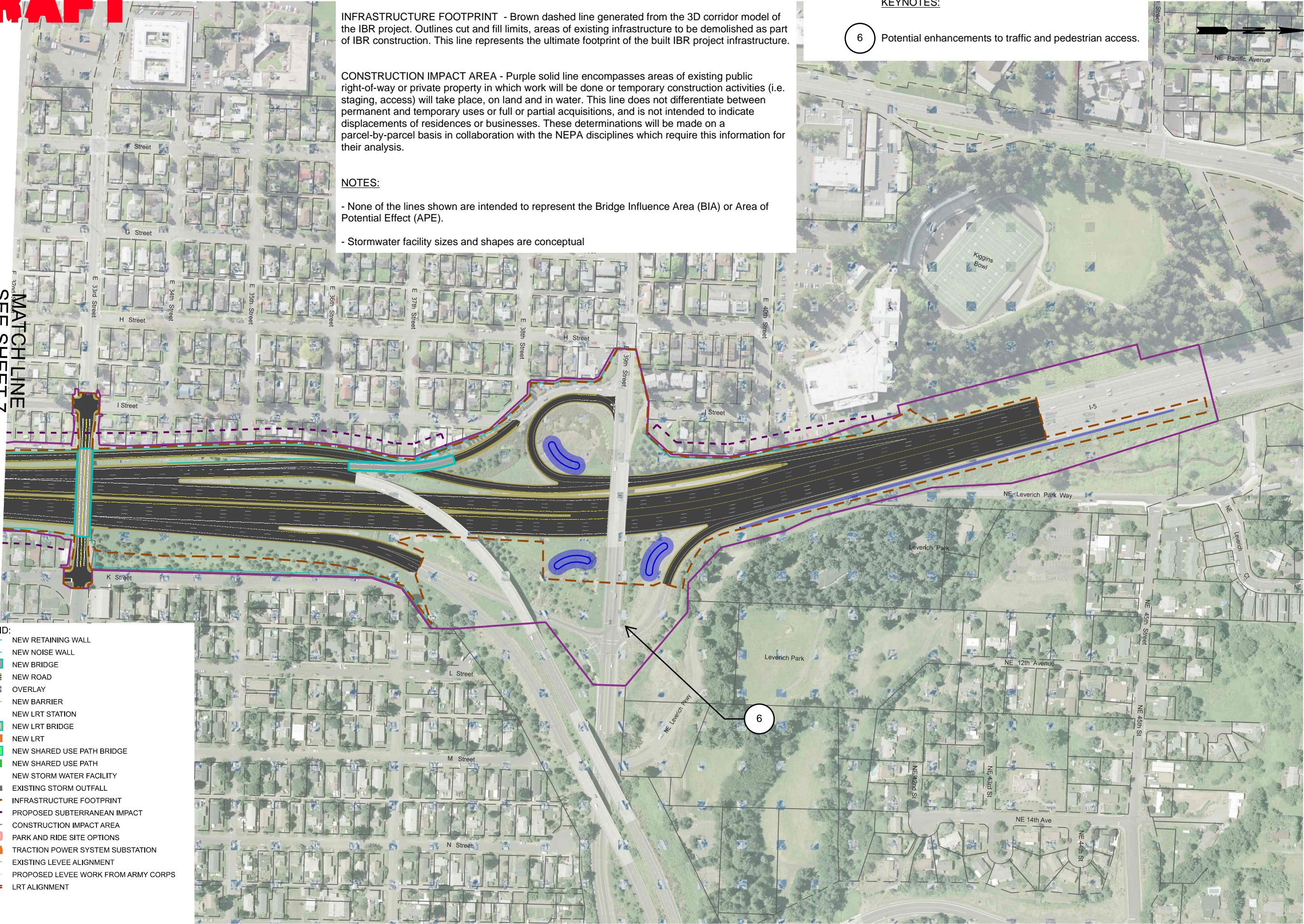
- None of the lines shown are intended to represent the Bridge Influence Area (BIA) or Area of Potential Effect (APE).
- Stormwater facility sizes and shapes are conceptual

KEYNOTES:

- 6 Potential enhancements to traffic and pedestrian access.

MATCH LINE
SEE SHEET 7

- LEGEND:
- NEW RETAINING WALL
 - NEW NOISE WALL
 - NEW BRIDGE
 - NEW ROAD
 - OVERLAY
 - NEW BARRIER
 - NEW LRT STATION
 - NEW LRT BRIDGE
 - NEW LRT
 - NEW SHARED USE PATH BRIDGE
 - NEW SHARED USE PATH
 - NEW STORM WATER FACILITY
 - EXISTING STORM OUTFALL
 - INFRASTRUCTURE FOOTPRINT
 - PROPOSED SUBTERRANEAN IMPACT
 - CONSTRUCTION IMPACT AREA
 - PARK AND RIDE SITE OPTIONS
 - TRACTION POWER SYSTEM SUBSTATION
 - EXISTING LEVEE ALIGNMENT
 - PROPOSED LEVEE WORK FROM ARMY CORPS
 - LRT ALIGNMENT



DRAFT

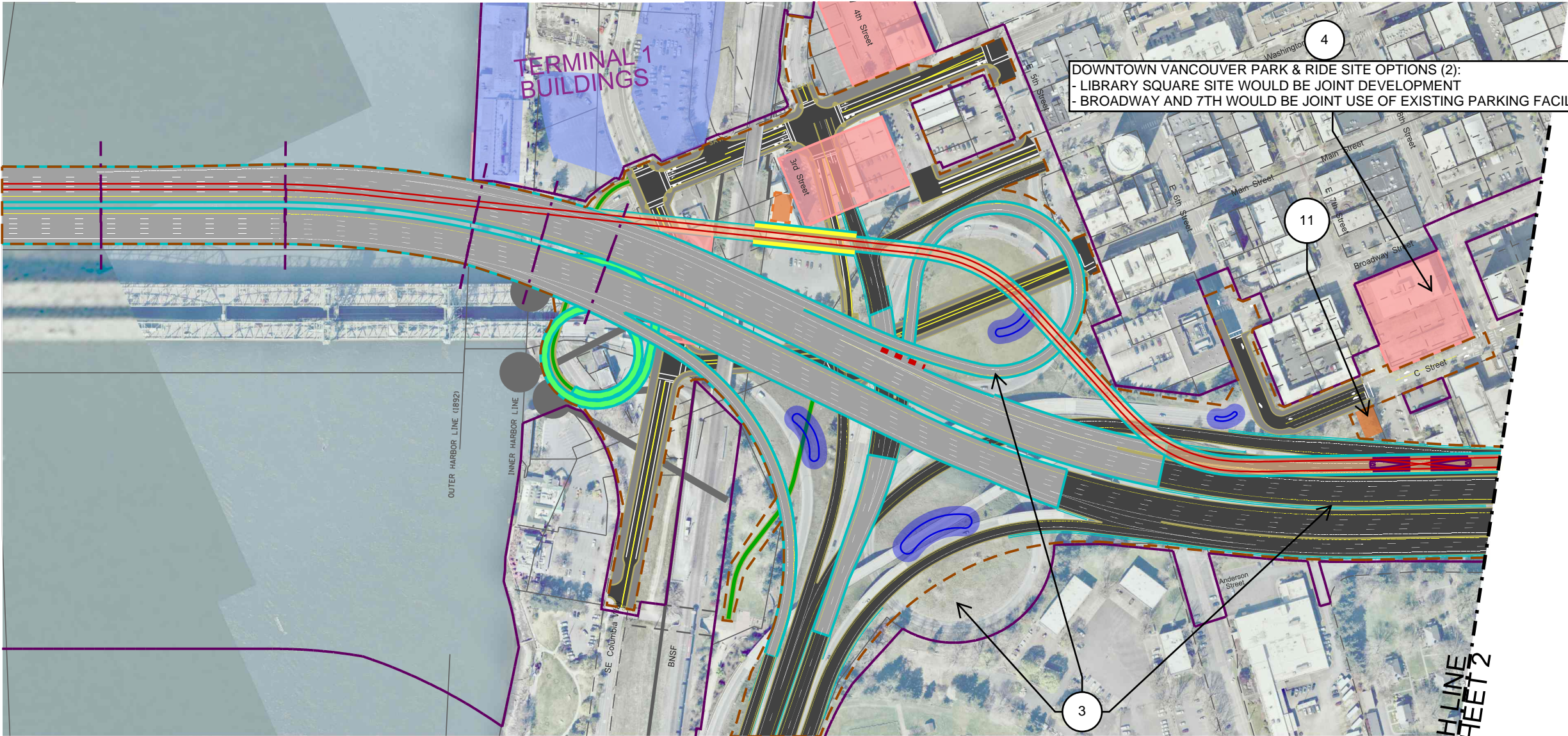
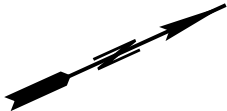
FOOTPRINT DEFINITIONS:

INFRASTRUCTURE FOOTPRINT - Brown dashed line generated from the 3D corridor model of the IBR project. Outlines cut and fill limits, areas of existing infrastructure to be demolished as part of IBR construction. This line represents the ultimate footprint of the built IBR project infrastructure.

CONSTRUCTION IMPACT AREA - Purple solid line encompasses areas of existing public right-of-way or private property in which work will be done or temporary construction activities (i.e. staging, access) will take place, on land and in water. This line does not differentiate between permanent and temporary uses or full or partial acquisitions, and is not intended to indicate displacements of residences or businesses. These determinations will be made on a parcel-by-parcel basis in collaboration with the NEPA disciplines which require this information for their analysis.

NOTES:

- None of the lines shown are intended to represent the Bridge Influence Area (BIA) or Area of Potential Effect (APE).
- Stormwater facility sizes and shapes are conceptual



- LEGEND:
- NEW RETAINING WALL
 - NEW NOISE WALL
 - NEW BRIDGE
 - NEW ROAD OVERLAY
 - NEW BARRIER
 - NEW LRT STATION
 - NEW LRT BRIDGE
 - NEW LRT
 - NEW SHARED USE PATH BRIDGE
 - NEW SHARED USE PATH
 - NEW STORM WATER FACILITY
 - EXISTING STORM OUTFALL
 - INFRASTRUCTURE FOOTPRINT
 - PROPOSED SUBTERRANEAN IMPACT
 - CONSTRUCTION IMPACT AREA
 - PARK AND RIDE SITE OPTIONS
 - TRACTION POWER SYSTEM SUBSTATION
 - EXISTING LEVEE ALIGNMENT
 - PROPOSED LEVEE WORK FROM ARMY CORPS
 - LRT ALIGNMENT

KEYNOTES:

- 3 See 2 Aux, Double Deck With C Street Graphics for alternate design
- 4 Park & Ride site options. One location would be constructed but all should be studied.
- 11 TPSS Building Location

DOWNTOWN VANCOUVER PARK & RIDE SITE OPTIONS (2):
- LIBRARY SQUARE SITE WOULD BE JOINT DEVELOPMENT
- BROADWAY AND 7TH WOULD BE JOINT USE OF EXISTING PARKING FACILITY

MATCH LINE
SEE SHEET 2



DRAFT

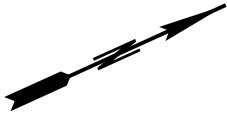
FOOTPRINT DEFINITIONS:

INFRASTRUCTURE FOOTPRINT - Brown dashed line generated from the 3D corridor model of the IBR project. Outlines cut and fill limits, areas of existing infrastructure to be demolished as part of IBR construction. This line represents the ultimate footprint of the built IBR project infrastructure.

CONSTRUCTION IMPACT AREA - Purple solid line encompasses areas of existing public right-of-way or private property in which work will be done or temporary construction activities (i.e. staging, access) will take place, on land and in water. This line does not differentiate between permanent and temporary uses or full or partial acquisitions, and is not intended to indicate displacements of residences or businesses. These determinations will be made on a parcel-by-parcel basis in collaboration with the NEPA disciplines which require this information for their analysis.

NOTES:

- None of the lines shown are intended to represent the Bridge Influence Area (BIA) or Area of Potential Effect (APE).
- Stormwater facility sizes and shapes are conceptual



DOWNTOWN VANCOUVER PARK & RIDE SITE OPTIONS (2):
- LIBRARY SQUARE SITE WOULD BE JOINT DEVELOPMENT
- BROADWAY AND 7TH WOULD BE JOINT USE OF EXISTING PARKING FACILITY

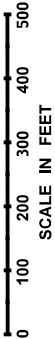
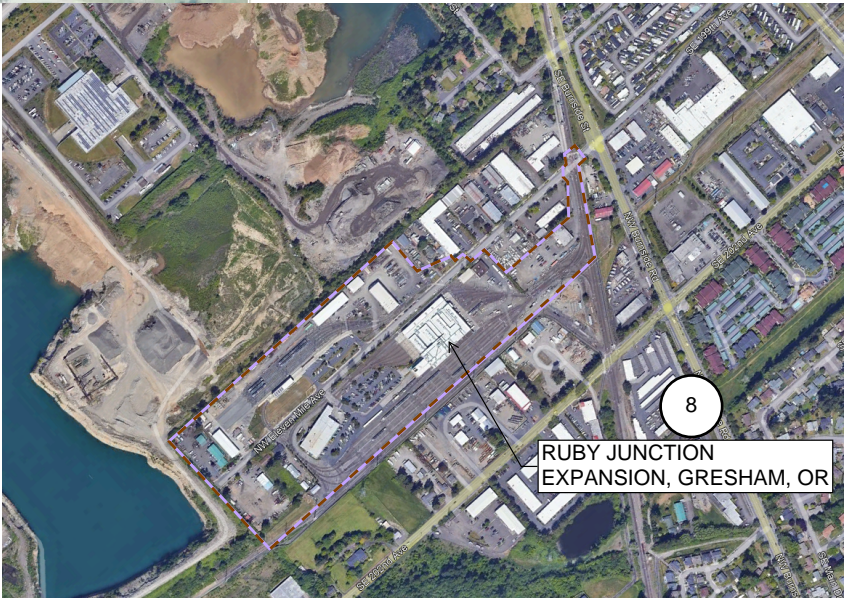
EVERGREEN LRT STATION IS AT-GRADE WITH EVERGREEN BLVD AND THE COMMUNITY CONNECTOR.

- LEGEND:
- NEW RETAINING WALL
 - NEW NOISE WALL
 - NEW BRIDGE
 - NEW ROAD
 - OVERLAY
 - NEW BARRIER
 - NEW LRT STATION
 - NEW LRT BRIDGE
 - NEW LRT
 - NEW SHARED USE PATH BRIDGE
 - NEW SHARED USE PATH
 - NEW STORM WATER FACILITY
 - EXISTING STORM OUTFALL
 - INFRASTRUCTURE FOOTPRINT
 - PROPOSED SUBTERRANEAN IMPACT
 - CONSTRUCTION IMPACT AREA
 - PARK AND RIDE SITE OPTIONS
 - TRACTION POWER SYSTEM SUBSTATION
 - EXISTING LEVEE ALIGNMENT
 - PROPOSED LEVEE WORK FROM ARMY CORPS
 - LRT ALIGNMENT

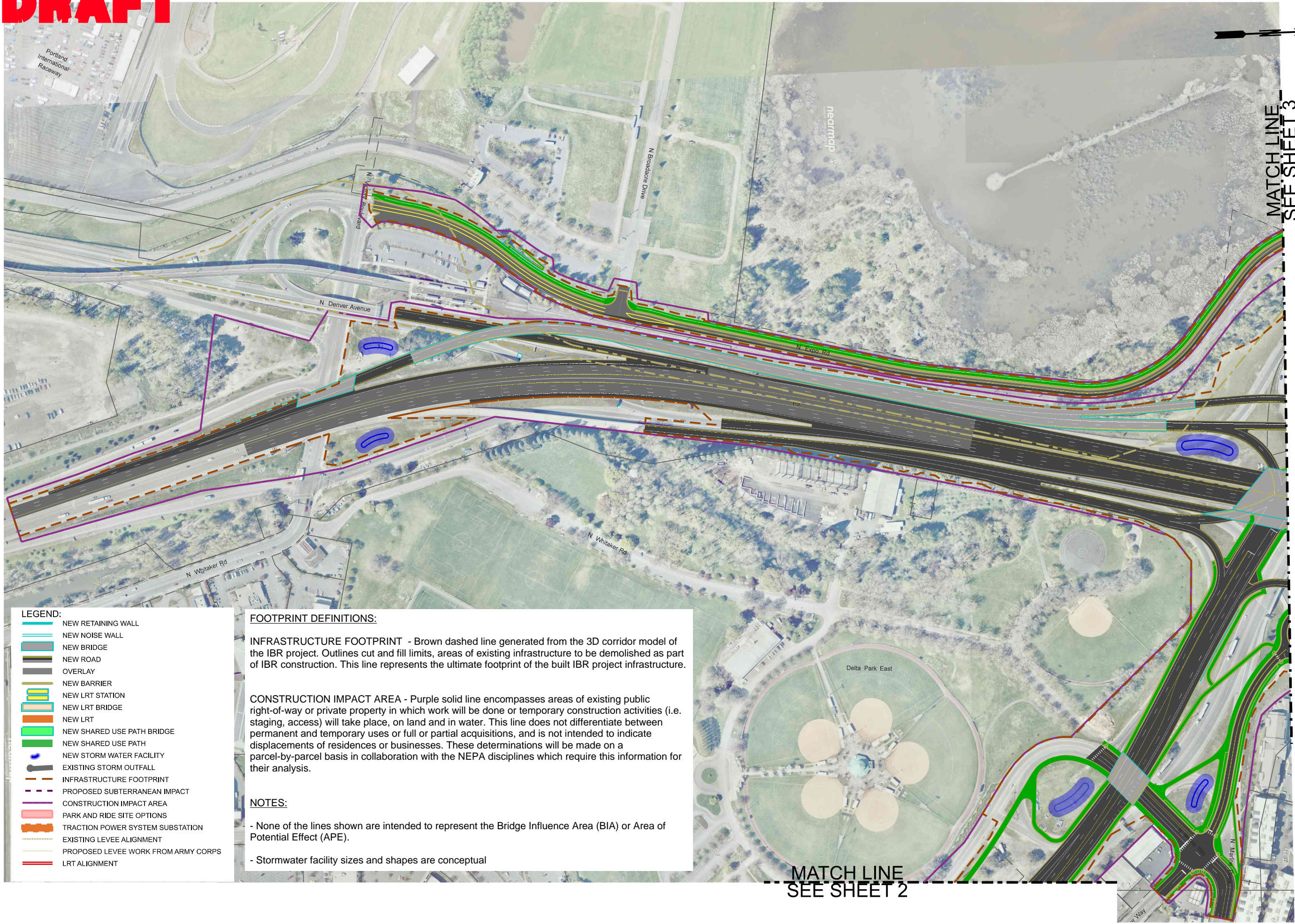
MATCH LINE
SEE SHEET 1

KEYNOTES:

- 4 Park & Ride site options. One location would be constructed but all should be studied.
- 5 Potential enhancements to support access to transit.
- 6 Potential enhancements to traffic and pedestrian access.
- 8 Transit facility expansion or new facility included in the IBR project. See vicinity map on key map sheet for location.



DRAFT



- LEGEND:**
- NEW RETAINING WALL
 - NEW NOISE WALL
 - NEW BRIDGE
 - NEW ROAD
 - OVERLAY
 - NEW BARRIER
 - NEW LRT STATION
 - NEW LRT BRIDGE
 - NEW LRT
 - NEW SHARED USE PATH BRIDGE
 - NEW SHARED USE PATH
 - NEW STORM WATER FACILITY
 - EXISTING STORM OUTFALL
 - INFRASTRUCTURE FOOTPRINT
 - PROPOSED SUBTERRANEAN IMPACT
 - CONSTRUCTION IMPACT AREA
 - PARK AND RIDE SITE OPTIONS
 - TRACTION POWER SYSTEM SUBSTATION
 - EXISTING LEVEE ALIGNMENT
 - PROPOSED LEVEE WORK FROM ARMY CORPS
 - LRT ALIGNMENT

FOOTPRINT DEFINITIONS:

INFRASTRUCTURE FOOTPRINT - Brown dashed line generated from the 3D corridor model of the IBR project. Outlines cut and fill limits, areas of existing infrastructure to be demolished as part of IBR construction. This line represents the ultimate footprint of the built IBR project infrastructure.

CONSTRUCTION IMPACT AREA - Purple solid line encompasses areas of existing public right-of-way or private property in which work will be done or temporary construction activities (i.e. staging, access) will take place, on land and in water. This line does not differentiate between permanent and temporary uses or full or partial acquisitions, and is not intended to indicate displacements of residences or businesses. These determinations will be made on a parcel-by-parcel basis in collaboration with the NEPA disciplines which require this information for their analysis.

NOTES:

- None of the lines shown are intended to represent the Bridge Influence Area (BIA) or Area of Potential Effect (APE).
- Stormwater facility sizes and shapes are conceptual

DRAFT

- LEGEND:
- NEW RETAINING WALL
 - NEW NOISE WALL
 - NEW BRIDGE
 - NEW ROAD
 - OVERLAY
 - NEW BARRIER
 - NEW LRT STATION
 - NEW LRT BRIDGE
 - NEW LRT
 - NEW SHARED USE PATH BRIDGE
 - NEW SHARED USE PATH
 - NEW STORM WATER FACILITY
 - EXISTING STORM OUTFALL
 - INFRASTRUCTURE FOOTPRINT
 - PROPOSED SUBTERRANEAN IMPACT
 - CONSTRUCTION IMPACT AREA
 - PARK AND RIDE SITE OPTIONS
 - TRACTION POWER SYSTEM SUBSTATION
 - EXISTING LEVEE ALIGNMENT
 - PROPOSED LEVEE WORK FROM ARMY CORPS
 - LRT ALIGNMENT

FOOTPRINT DEFINITIONS:

INFRASTRUCTURE FOOTPRINT - Brown dashed line generated from the 3D corridor model of the IBR project. Outlines cut and fill limits, areas of existing infrastructure to be demolished as part of IBR construction. This line represents the ultimate footprint of the built IBR project infrastructure.

CONSTRUCTION IMPACT AREA - Purple solid line encompasses areas of existing public right-of-way or private property in which work will be done or temporary construction activities (i.e. staging, access) will take place, on land and in water. This line does not differentiate between permanent and temporary uses or full or partial acquisitions, and is not intended to indicate displacements of residences or businesses. These determinations will be made on a parcel-by-parcel basis in collaboration with the NEPA disciplines which require this information for their analysis.

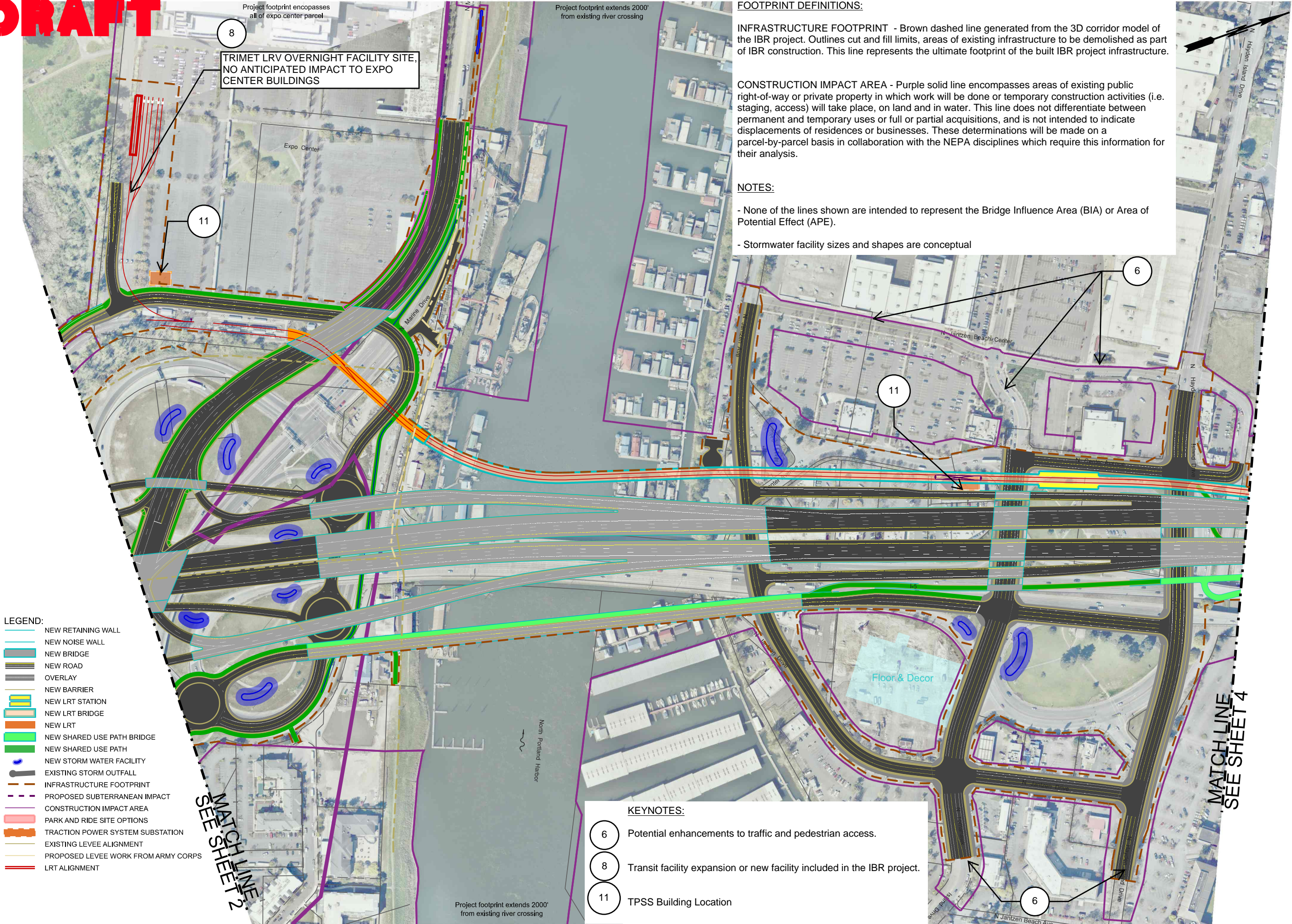
NOTES:

- None of the lines shown are intended to represent the Bridge Influence Area (BIA) or Area of Potential Effect (APE).
- Stormwater facility sizes and shapes are conceptual

KEYNOTES:

- 8 Transit facility expansion or new facility included in the IBR project. See vicinity map on key map sheet for location.

DRAFT



- LEGEND:
- NEW RETAINING WALL
 - NEW NOISE WALL
 - NEW BRIDGE
 - NEW ROAD
 - OVERLAY
 - NEW BARRIER
 - NEW LRT STATION
 - NEW LRT BRIDGE
 - NEW LRT
 - NEW SHARED USE PATH BRIDGE
 - NEW SHARED USE PATH
 - NEW STORM WATER FACILITY
 - EXISTING STORM OUTFALL
 - INFRASTRUCTURE FOOTPRINT
 - PROPOSED SUBTERRANEAN IMPACT
 - CONSTRUCTION IMPACT AREA
 - PARK AND RIDE SITE OPTIONS
 - TRACTION POWER SYSTEM SUBSTATION
 - EXISTING LEVEE ALIGNMENT
 - PROPOSED LEVEE WORK FROM ARMY CORPS
 - LRT ALIGNMENT

MATCH LINE
SEE SHEET 2

TRIMET LRV OVERNIGHT FACILITY SITE,
NO ANTICIPATED IMPACT TO EXPO
CENTER BUILDINGS

Project footprint encompasses
all of expo center parcel

Project footprint extends 2000'
from existing river crossing

Project footprint extends 2000'
from existing river crossing

FOOTPRINT DEFINITIONS:

INFRASTRUCTURE FOOTPRINT - Brown dashed line generated from the 3D corridor model of the IBR project. Outlines cut and fill limits, areas of existing infrastructure to be demolished as part of IBR construction. This line represents the ultimate footprint of the built IBR project infrastructure.

CONSTRUCTION IMPACT AREA - Purple solid line encompasses areas of existing public right-of-way or private property in which work will be done or temporary construction activities (i.e. staging, access) will take place, on land and in water. This line does not differentiate between permanent and temporary uses or full or partial acquisitions, and is not intended to indicate displacements of residences or businesses. These determinations will be made on a parcel-by-parcel basis in collaboration with the NEPA disciplines which require this information for their analysis.

NOTES:

- None of the lines shown are intended to represent the Bridge Influence Area (BIA) or Area of Potential Effect (APE).
- Stormwater facility sizes and shapes are conceptual

KEYNOTES:

- 6 Potential enhancements to traffic and pedestrian access.
- 8 Transit facility expansion or new facility included in the IBR project.
- 11 TPSS Building Location

MATCH LINE
SEE SHEET 4

DRAFT

FOOTPRINT DEFINITIONS:

INFRASTRUCTURE FOOTPRINT - Brown dashed line generated from the 3D corridor model of the IBR project. Outlines cut and fill limits, areas of existing infrastructure to be demolished as part of IBR construction. This line represents the ultimate footprint of the built IBR project infrastructure. CONSTRUCTION IMPACT AREA - Purple solid line encompasses areas of existing public right-of-way or private property in which work will be done or temporary construction activities (i.e. staging, access) will take place, on land and in water. This line does not differentiate between permanent and temporary uses or full or partial acquisitions, and is not intended to indicate displacements of residences or businesses. These determinations will be made on a parcel-by-parcel basis in collaboration with the NEPA disciplines which require this information for their analysis.

NOTES:

- None of the lines shown are intended to represent the Bridge Influence Area (BIA) or Area of Potential Effect (APE).
- Stormwater facility sizes and shapes are conceptual

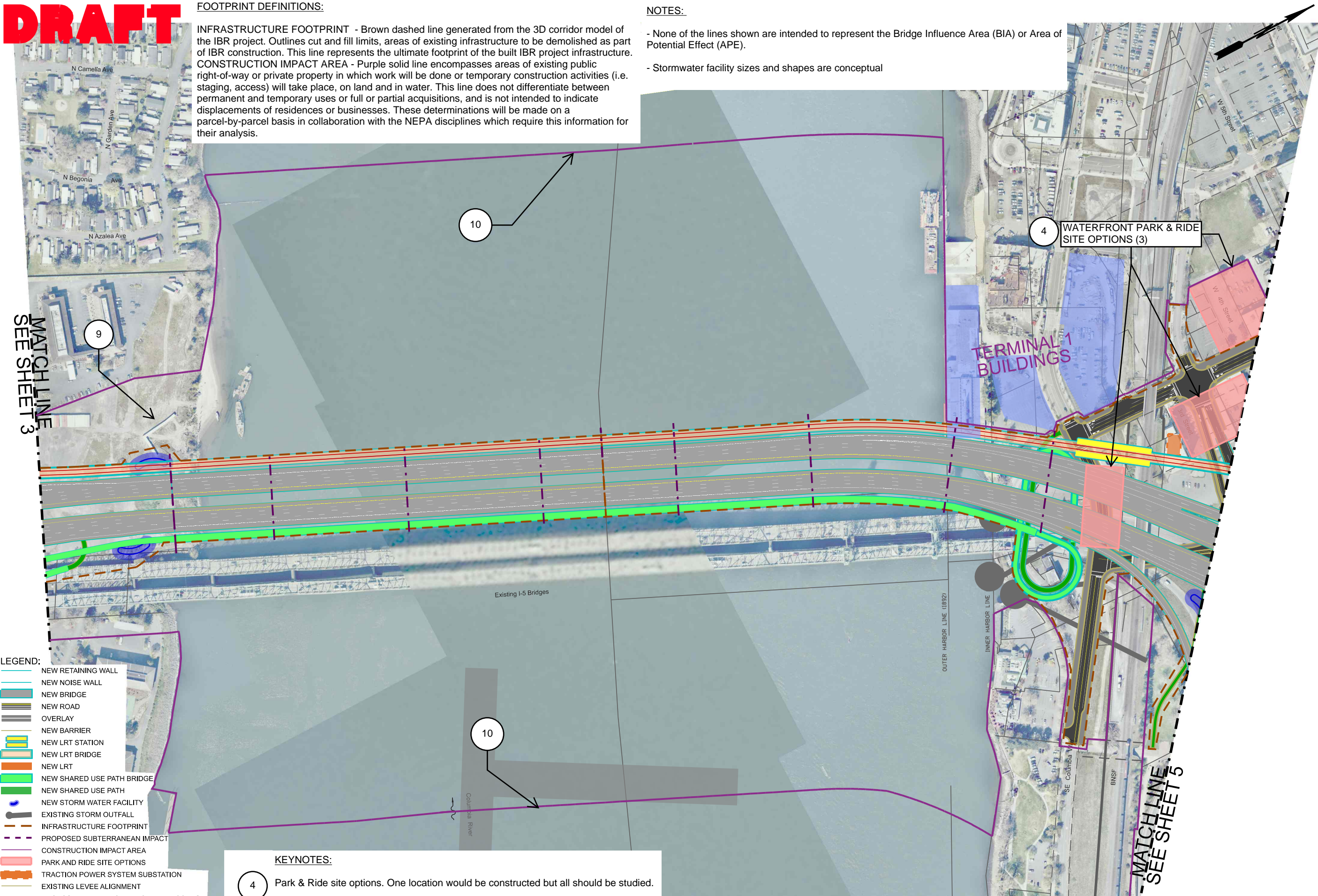
MATCH LINE
SEE SHEET 3

- LEGEND:
- NEW RETAINING WALL
 - NEW NOISE WALL
 - NEW BRIDGE
 - NEW ROAD
 - OVERLAY
 - NEW BARRIER
 - NEW LRT STATION
 - NEW LRT BRIDGE
 - NEW LRT
 - NEW SHARED USE PATH BRIDGE
 - NEW SHARED USE PATH
 - NEW STORM WATER FACILITY
 - EXISTING STORM OUTFALL
 - INFRASTRUCTURE FOOTPRINT
 - PROPOSED SUBTERRANEAN IMPACT
 - CONSTRUCTION IMPACT AREA
 - PARK AND RIDE SITE OPTIONS
 - TRACTION POWER SYSTEM SUBSTATION
 - EXISTING LEVEE ALIGNMENT
 - PROPOSED LEVEE WORK FROM ARMY CORPS
 - LRT ALIGNMENT

KEYNOTES:

- 4 Park & Ride site options. One location would be constructed but all should be studied.
- 9 Potential staging area. Not all potential staging areas are identified.

- 10 In-water staging/work areas.
~1000' upstream of existing Interstate Bridge and ~1000' downstream of new Interstate Bridge.
~2000' upstream and downstream of new North Portland Harbor Bridges.



DRAFT

FOOTPRINT DEFINITIONS:

INFRASTRUCTURE FOOTPRINT - Brown dashed line generated from the 3D corridor model of the IBR project. Outlines cut and fill limits, areas of existing infrastructure to be demolished as part of IBR construction. This line represents the ultimate footprint of the built IBR project infrastructure.

CONSTRUCTION IMPACT AREA - Purple solid line encompasses areas of existing public right-of-way or private property in which work will be done or temporary construction activities (i.e. staging, access) will take place, on land and in water. This line does not differentiate between permanent and temporary uses or full or partial acquisitions, and is not intended to indicate displacements of residences or businesses. These determinations will be made on a parcel-by-parcel basis in collaboration with the NEPA disciplines which require this information for their analysis.

NOTES:

- None of the lines shown are intended to represent the Bridge Influence Area (BIA) or Area of Potential Effect (APE).
- Stormwater facility sizes and shapes are conceptual

LEGEND:

- NEW RETAINING WALL
- NEW NOISE WALL
- NEW BRIDGE
- NEW ROAD
- OVERLAY
- NEW BARRIER
- NEW LRT STATION
- NEW LRT BRIDGE
- NEW LRT
- NEW SHARED USE PATH BRIDGE
- NEW SHARED USE PATH
- NEW STORM WATER FACILITY
- EXISTING STORM OUTFALL
- INFRASTRUCTURE FOOTPRINT
- PROPOSED SUBTERRANEAN IMPACT
- CONSTRUCTION IMPACT AREA
- PARK AND RIDE SITE OPTIONS
- TRACTION POWER SYSTEM SUBSTATION
- EXISTING LEVEE ALIGNMENT
- PROPOSED LEVEE WORK FROM ARMY CORPS
- LRT ALIGNMENT

DOWNTOWN VANCOUVER PARK & RIDE SITE OPTIONS (2):
- LIBRARY SQUARE SITE WOULD BE JOINT DEVELOPMENT
- BROADWAY AND 7TH WOULD BE JOINT USE OF EXISTING PARKING FACILITY

EVERGREEN LRT STATION IS AT-GRADE WITH EVERGREEN BLVD AND THE COMMUNITY CONNECTOR.

KEYNOTES:

- 4 Park & Ride site options. One location would be constructed but all should be studied.
- 5 Potential enhancements to support access to transit.
- 6 Potential enhancements to traffic and pedestrian access.
- 11 TPSS Building Location

DRAFT

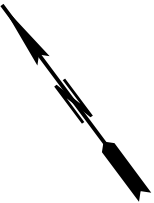
FOOTPRINT DEFINITIONS:

INFRASTRUCTURE FOOTPRINT - Brown dashed line generated from the 3D corridor model of the IBR project. Outlines cut and fill limits, areas of existing infrastructure to be demolished as part of IBR construction. This line represents the ultimate footprint of the built IBR project infrastructure.

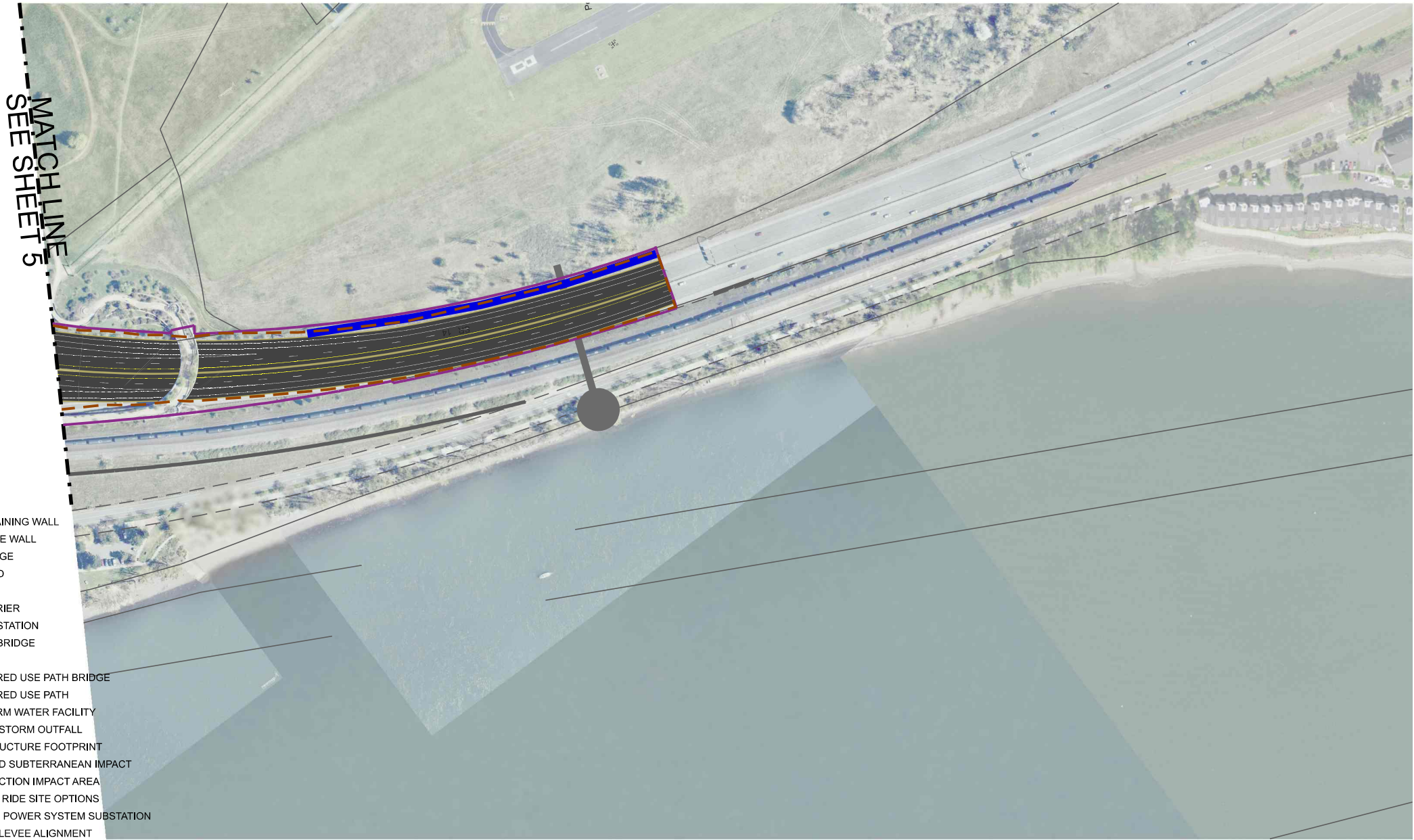
CONSTRUCTION IMPACT AREA - Purple solid line encompasses areas of existing public right-of-way or private property in which work will be done or temporary construction activities (i.e. staging, access) will take place, on land and in water. This line does not differentiate between permanent and temporary uses or full or partial acquisitions, and is not intended to indicate displacements of residences or businesses. These determinations will be made on a parcel-by-parcel basis in collaboration with the NEPA disciplines which require this information for their analysis.

NOTES:

- None of the lines shown are intended to represent the Bridge Influence Area (BIA) or Area of Potential Effect (APE).
- Stormwater facility sizes and shapes are conceptual



- LEGEND:
- NEW RETAINING WALL
 - NEW NOISE WALL
 - NEW BRIDGE
 - NEW ROAD
 - OVERLAY
 - NEW BARRIER
 - NEW LRT STATION
 - NEW LRT BRIDGE
 - NEW LRT
 - NEW SHARED USE PATH BRIDGE
 - NEW SHARED USE PATH
 - NEW STORM WATER FACILITY
 - EXISTING STORM OUTFALL
 - INFRASTRUCTURE FOOTPRINT
 - PROPOSED SUBTERRANEAN IMPACT
 - CONSTRUCTION IMPACT AREA
 - PARK AND RIDE SITE OPTIONS
 - TRACTION POWER SYSTEM SUBSTATION
 - EXISTING LEVEE ALIGNMENT
 - PROPOSED LEVEE WORK FROM ARMY CORPS
 - LRT ALIGNMENT



DRAFT

FOOTPRINT DEFINITIONS:

INFRASTRUCTURE FOOTPRINT - Brown dashed line generated from the 3D corridor model of the IBR project. Outlines cut and fill limits, areas of existing infrastructure to be demolished as part of IBR construction. This line represents the ultimate footprint of the built IBR project infrastructure.

CONSTRUCTION IMPACT AREA - Purple solid line encompasses areas of existing public right-of-way or private property in which work will be done or temporary construction activities (i.e. staging, access) will take place, on land and in water. This line does not differentiate between permanent and temporary uses or full or partial acquisitions, and is not intended to indicate displacements of residences or businesses. These determinations will be made on a parcel-by-parcel basis in collaboration with the NEPA disciplines which require this information for their analysis.

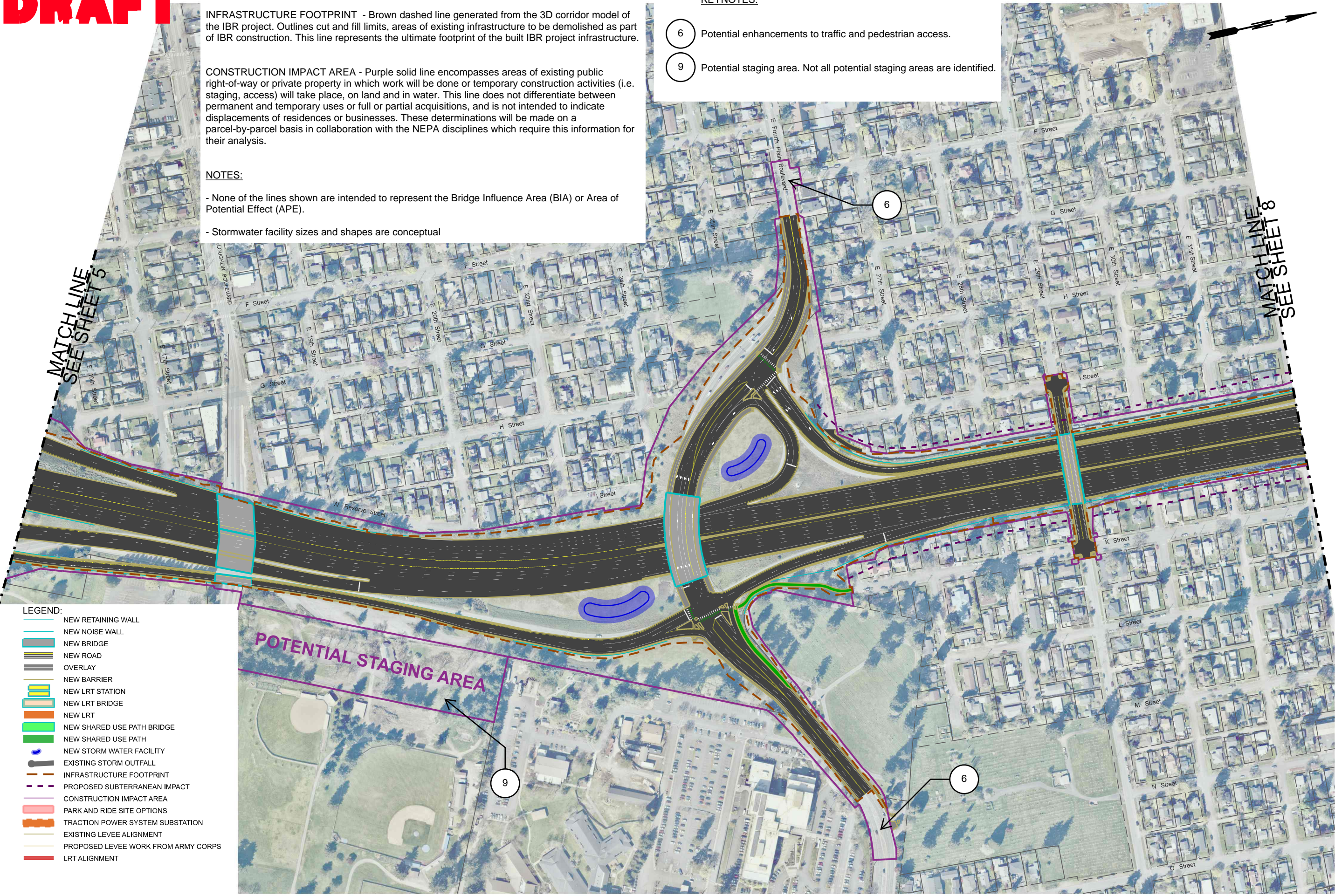
NOTES:

- None of the lines shown are intended to represent the Bridge Influence Area (BIA) or Area of Potential Effect (APE).

- Stormwater facility sizes and shapes are conceptual

KEYNOTES:

- 6
- Potential enhancements to traffic and pedestrian access.
- 9
- Potential staging area. Not all potential staging areas are identified.



DRAFT

FOOTPRINT DEFINITIONS:

INFRASTRUCTURE FOOTPRINT - Brown dashed line generated from the 3D corridor model of the IBR project. Outlines cut and fill limits, areas of existing infrastructure to be demolished as part of IBR construction. This line represents the ultimate footprint of the built IBR project infrastructure.

CONSTRUCTION IMPACT AREA - Purple solid line encompasses areas of existing public right-of-way or private property in which work will be done or temporary construction activities (i.e. staging, access) will take place, on land and in water. This line does not differentiate between permanent and temporary uses or full or partial acquisitions, and is not intended to indicate displacements of residences or businesses. These determinations will be made on a parcel-by-parcel basis in collaboration with the NEPA disciplines which require this information for their analysis.

NOTES:

- None of the lines shown are intended to represent the Bridge Influence Area (BIA) or Area of Potential Effect (APE).

- Stormwater facility sizes and shapes are conceptual

KEYNOTES:

6 Potential enhancements to traffic and pedestrian access.

MATCH LINE
SEE SHEET 7

- LEGEND:
- NEW RETAINING WALL
 - NEW NOISE WALL
 - NEW BRIDGE
 - NEW ROAD
 - OVERLAY
 - NEW BARRIER
 - NEW LRT STATION
 - NEW LRT BRIDGE
 - NEW LRT
 - NEW SHARED USE PATH BRIDGE
 - NEW SHARED USE PATH
 - NEW STORM WATER FACILITY
 - EXISTING STORM OUTFALL
 - INFRASTRUCTURE FOOTPRINT
 - PROPOSED SUBTERRANEAN IMPACT
 - CONSTRUCTION IMPACT AREA
 - PARK AND RIDE SITE OPTIONS
 - TRACTION POWER SYSTEM SUBSTATION
 - EXISTING LEVEE ALIGNMENT
 - PROPOSED LEVEE WORK FROM ARMY CORPS
 - LRT ALIGNMENT