



Interstate
BRIDGE
Replacement Program



Equity Advisory Group

December 18, 2023

Closed Captions in English and Spanish

English closed captions are available within Zoom and YouTube.

Users can follow this link to view both English and Spanish captions in a separate browser window:

<https://ibr.news/captions>

Subtítulos disponible en Inglés y Español

Los subtítulos en Inglés están disponibles en Zoom y YouTube.

Usuarios pueden seguir este enlace para ver los subtítulos en Inglés y Español en una ventana separada del navegador:

<https://ibr.news/captions>

Reminders

- ▶ We encourage EAG members to turn on your video.
- ▶ Please say your name when you begin to speak.
- ▶ If you experience technical difficulties, please contact program staff at: **(360) 329-6744**

Public Input Instructions

- ▶ There will be an opportunity to provide brief public input later in the meeting today.
- ▶ To submit input after the meeting:
 - Email comments to info@interstatebridge.org with “EAG Public Comment” in the subject line
 - Call 888-503-6735 and state “EAG Public Comment” in your message



Today's agenda

- ▶ Icebreaker
- ▶ Program Administrator Update
- ▶ Program History Overview
- ▶ Equity & Climate Frameworks Overview
- ▶ Visioning Exercise
- ▶ Public comment
- ▶ Close out

Icebreaker

- ▶ Name + pronouns
- ▶ Affiliation
- ▶ Share a brief personal or professional win from the past month that brought you joy or a sense of accomplishment. It could be big or small, and we'd love to celebrate with you!



Program Update

Greg Johnson, Program Administrator

Recent Program Updates

▶ Federal Grant Update

- Mega Grant award announcements
- Bridge Investment Program (BIP) grant application submitted and announcements expected in mid-2024

▶ Governor Jay Inslee Visit

- Highlighting the need for the program and the importance of federal funding

▶ Bi-State Legislative Committee

- Video recordings and meeting materials available online
- www.interstatebridge.org/calendar

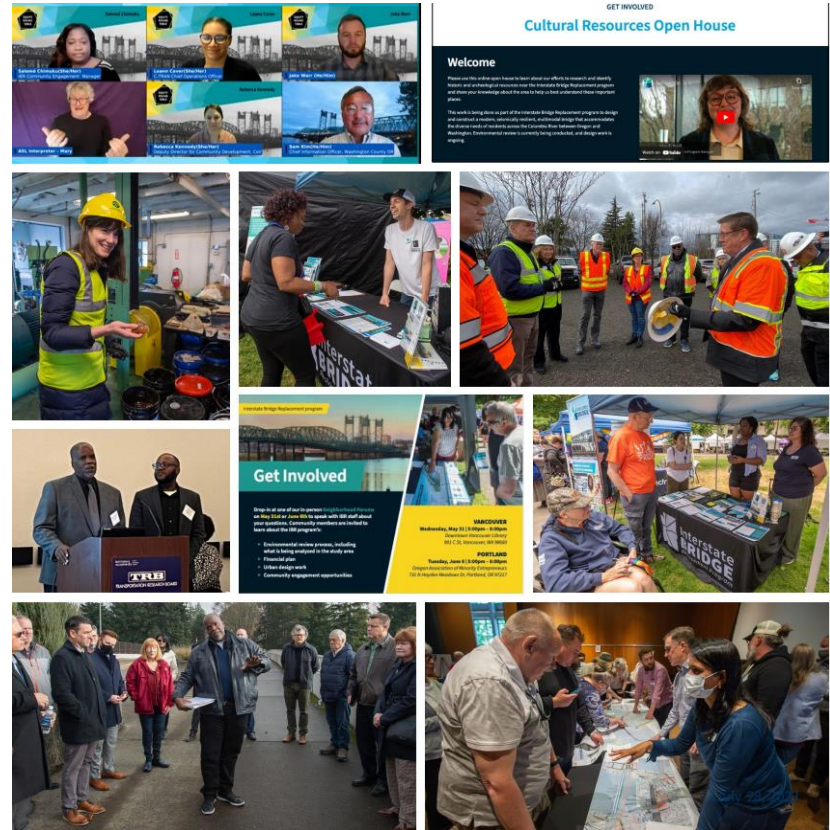


Recent Program Updates

► Community presentations:

- Arnada Neighborhood Association
- City of Portland Bike/Pedestrian Advisory Committees
- Metropolitan Mayor's Consortium
- C-TRAN's Citizen Advisory Committee
- Urban Design Panel
- Vancouver City Council Forum (Tabling)
- Washington Public Ports Association Annual Meeting
- IBR Virtual Public Briefing
- IBR/CBO Listening Session (Multilingual)

► Focus for 2024





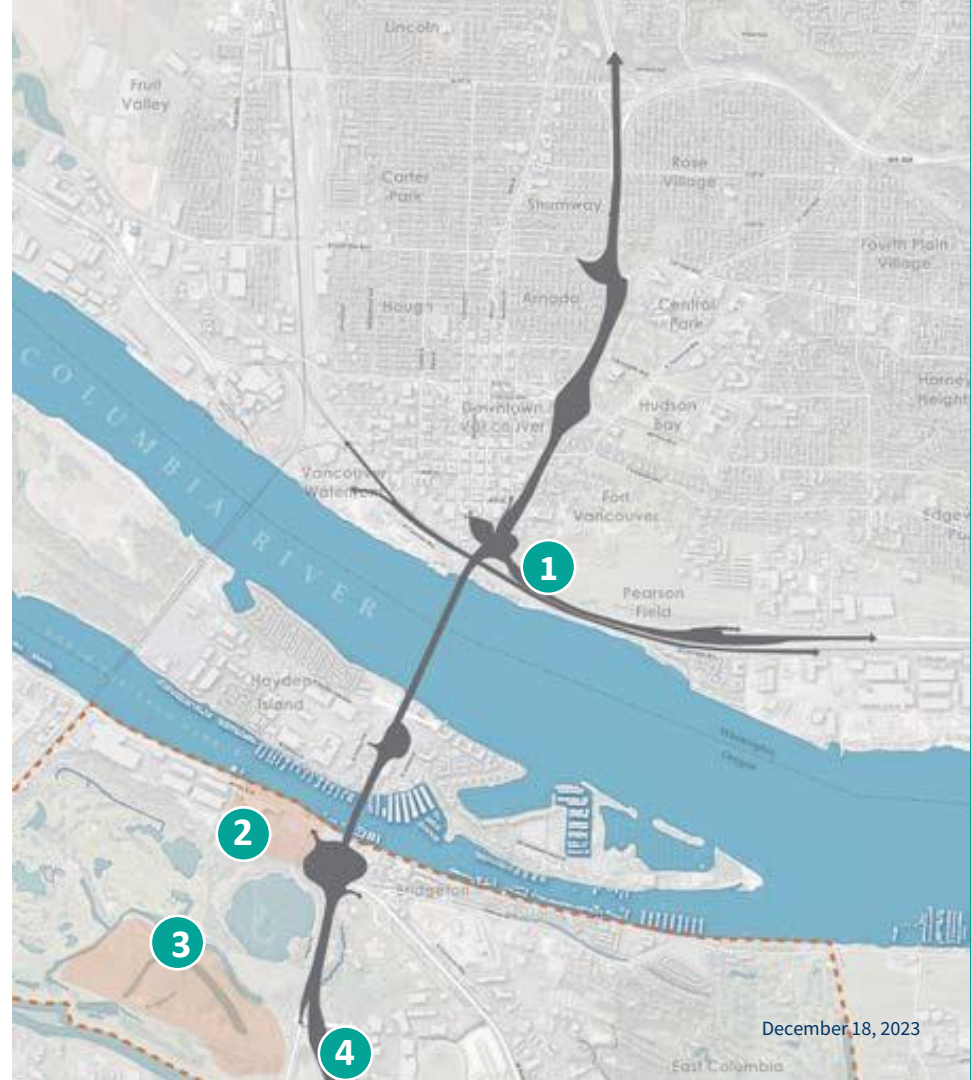
History in the Program Area

Greg Johnson, Program Administrator

Program Area History

- 1 Indigenous Peoples - Historical Context
- 2 Portland Assembly Center
- 3 Vanport Floods
- 4 Other Regional History - Community Displacement

The intent of this restorative inquiry is to look back, not ascribe blame, but shed light on history and experiences to learn from it to move to a brighter future and not repeat the harms of the past.



IBR Corridor History: Vancouver's Journey

▶ Indigenous Peoples

- Indigenous cultures and community since time immemorial. This area remains significant to Indigenous people today

▶ Military and Trading

- Columbia Rediviva - 1792
- Hudson's Bay Company - 1825
- Vancouver Barracks - 1849

▶ Industrialization

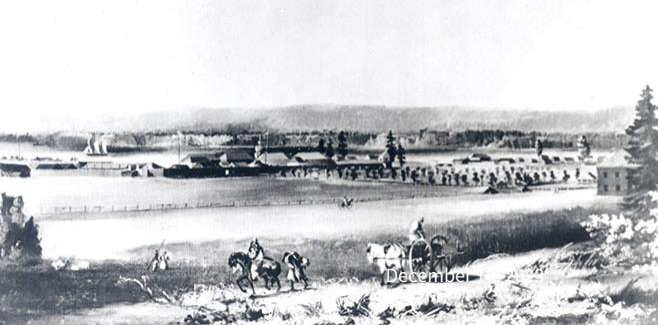
- Railroad - 1906
- First interstate bridge - 1917
- Second interstate bridge - 1958
- Columbia River hydro system - 1940s-'60s
- Kaiser Shipyards - 1942
- Vancouver Housing Authority - 1942
- Federal highway system - 1950s-'70s



▶ Great Suburban Expansion (1970s – 2010s)

- Affordability
- Auto oriented, single-family housing
- Imbalance of jobs/housing
- Interstate commute issues
- Politically driven tax reform

▶ Suburban – to - urban transition (present)



IBR Corridor History: Indigenous Peoples Historic Context

Indigenous peoples have lived in and traveled to the Portland-Vancouver region since time immemorial, including in the immediate vicinity of the current Interstate Bridge.

White settlement disrupted tribal communities in the early 19th Century, and the U.S. government removed most Indigenous peoples to reservations in the 1850s.

This area along the Columbia River remains significant to Indigenous communities today.

IBR is consulting and coordinating with 10 federally recognized tribal governments. This process is a government-to-government process established through federal and state law.



IBR Corridor History: Portland Assembly Center

At the time of the Japanese attack on Pearl Harbor in 1941, about 120,000 persons of Japanese ancestry lived on the U.S. mainland, mostly along the Pacific Coast.

In May 1942, Portland-area Japanese Americans were evacuated to temporary living quarters in the Pacific International Livestock Exposition building in North Portland, renamed the North Portland Assembly Center.

2/3 of individuals held at the assembly center were U.S. citizens.

Camp residents lost over \$400 million in property during their incarceration.



IBR Corridor History: Vanport Flood

Vanport was built as a temporary housing solution to Portland's rapidly growing population. At its peak it housed nearly 40,000 residents, almost 40% were African-American.

In 1948, a massive flood occurred and communities were not warned or evacuated.

18,500 families were displaced, more than 1/3 African-American.

Racial covenants and redlining acted as social dividers which kept black communities segregated from economic opportunity.

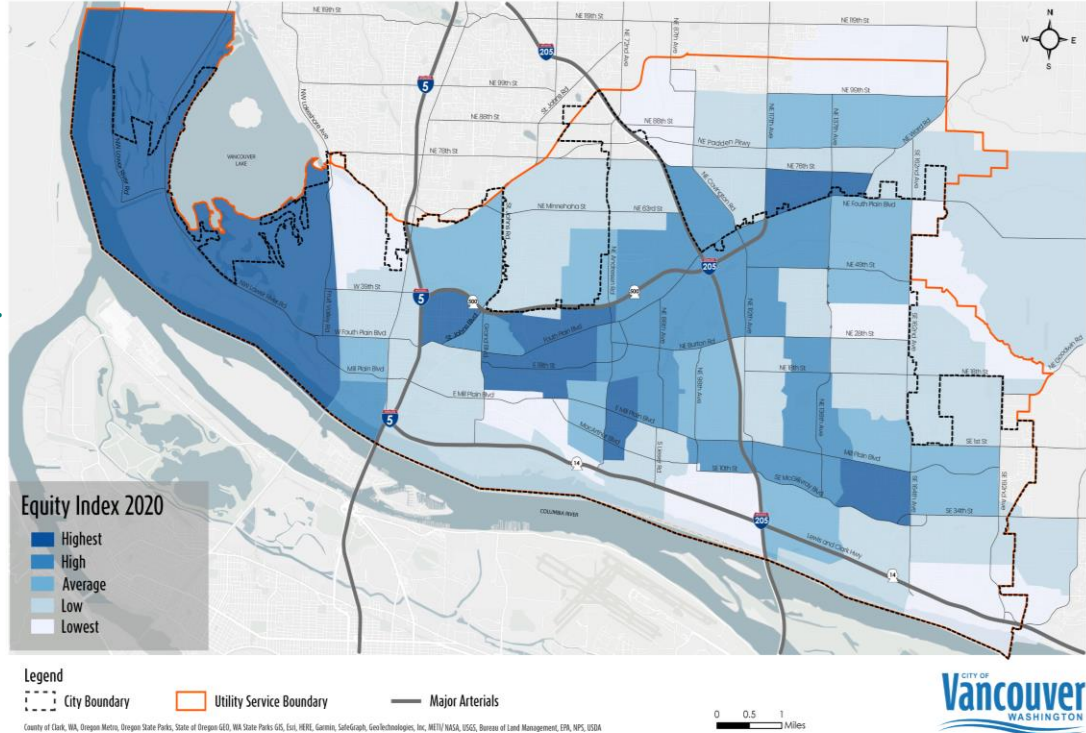
Equity Priority Communities Map in Washington

▶ Equity Index Overview:

- Identifying Equity Priority communities on the Washington side.
- Equity priority communities are typically underrepresented in transportation infrastructure projects.

▶ Visual Representation of Equity Scoring:

- Darker shades = higher proportions of priority communities.
- Lighter shades = lower proportions.



Other Regional History: Albina Displaced

1956

“Voters approve construction of Memorial Coliseum in the Eliot neighborhood, **resulting in the teardown of more than 450 Albina homes and businesses.** At the time, four out of five people in this thriving, close-knit community are Black. Many are former inhabitants of Vanport because redlining policies limited where they could live. This same year, federal officials also approve highway construction funds that would pave Interstate 5 and [Highway] 99 through South Albina, **destroying more than eleven hundred homes.**”

Source: By Walidah Imarisha, *A Hidden History* (2013) Oregon Humanities





Equity & Climate Frameworks

Shannon Singleton, Community Benefits Lead

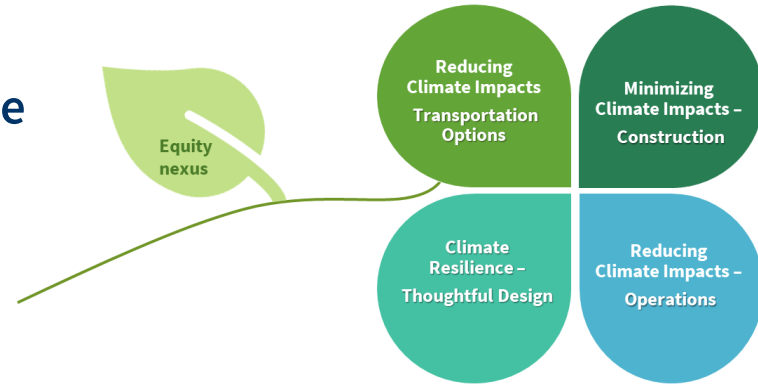
IBR Equity Framework

► Principles:

- Acknowledge, honor, and apply lessons learned from history as well as current events
- Identify and address disparities
- When legally permissible, use existing laws and regulations as the floor, rather than the ceiling
- Prioritize contract equity and economic justice
 - *Leverage ~ \$6 billion program investment to the benefit of the region*
 - *Give those most impacted by program with the least access to decision-makers opportunities for meaningful engagement*

Climate Framework & Program Elements

- ▶ Resilience and adaptation
- ▶ Deliver transportation options and reduce GHG in support of state goals
 - High-capacity transit (dedicated guideway)
 - Variable rate tolling
 - Low-stress active transportation options
 - Safety and efficiency solutions
 - Long-term operations and maintenance considerations
- ▶ Construction – minimize embodied carbon
 - Multiple elements under consideration, from construction equipment emissions to materials



Community Values & Priorities

- Increasing the capacity of river crossings by providing all modes of transportation is essential to effectively and safely move more people, goods, and services
- Centering equity & avoiding further harm
- Improve resiliency to global climate change
- Informed, data-driven decision-making
- Cost effectiveness (affordability & future planning)
- Economic empowerment
- Congestion relief
- Transportation facilities must reflect the needs of all ages & abilities, and remove barriers, including language, to access and ensure availability to transportation choices
- Protect natural resources
- Honor and protect historical heritage & cultural resources
- Bi-State cooperation
- Opportunities for meaningful and equitable community engagement

Questions for the Visioning Exercise

- ▶ What is the future state of our communities in the program area when construction is complete?
- ▶ Which specific elements align with the guidance outlined in our values and priorities?
- ▶ What items address the guidance from the equity and climate framework?
- ▶ Examples:
 - *People with different incomes and identities are able to afford living in the neighborhood and feel safe walking/biking/driving.*
 - *There are no more heat domes in these neighborhoods.*



Breakout Session in Progress

We will return in 30 minutes.

Large Group Report

Public Comment

Comment Instructions

- ▶ Through Zoom:
 - ▶ Please use the link located in the meeting description on the YouTube meeting page or on the IBR EAG meeting webpage.
 - ▶ Commenters will be allowed to turn on their webcams, but will not be allowed to share their screens and will be removed from the room once the public comment period concludes.
- ▶ By phone:
 - ▶ Dial 253-215-8782
 - ▶ Meeting ID: 986 0940 5983
 - ▶ Passcode: 701376
 - ▶ Dial *9 to raise your hand
 - ▶ Dial *6 to unmute yourself
- ▶ The facilitator will call on participants to provide comment
- ▶ Please provide your name and affiliation.
- ▶ Commenters will be given 2 minutes to speak.



or



Comment Instructions

To submit comment after the meeting:



- ▶ Fill out the comment form on the program website or email your comments to info@interstatebridge.org with “**EAG Public Comment**” in the subject line.



- ▶ Call **888-503-6735** and state “EAG Public Comment” in your message.
- ▶ All written comments must be received prior to 48 hours in advance of each upcoming meeting in order to be distributed to advisory group members. Comments received after that point will be distributed to members in advance of their next meeting.

Wrap up

- Meeting evaluation
- Next meeting: January 15, 5:30 – 7:30pm