



# Community Benefits Advisory Group Meeting

## Closed Captions in English and Spanish

English closed captions are available within Zoom and YouTube.

Users can follow this link to view both English and Spanish captions in a separate browser window:

<https://ibr.news/captions>

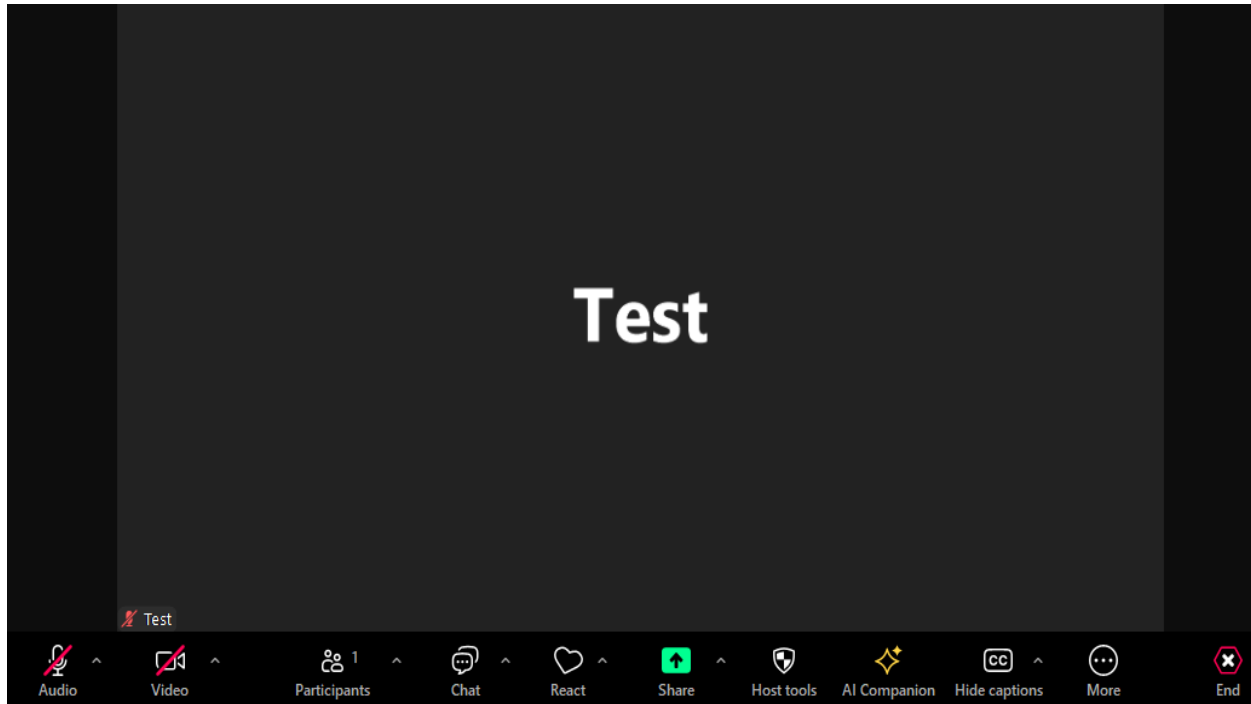
## Subtítulos disponible en Inglés y Español

Los subtítulos en Inglés están disponibles en Zoom y YouTube.

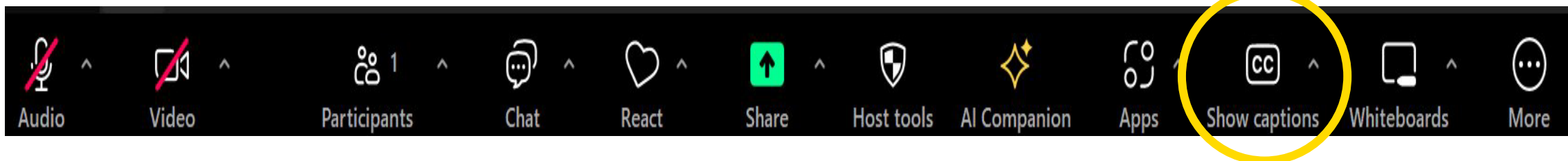
Usuarios pueden seguir este enlace para ver los subtítulos en Inglés y Español en una ventana separada del navegador:

<https://ibr.news/captions>

# How to access closed captions



1. At the bottom middle of your screen, you should see a menu of options. If you can't see the menu, hover your mouse over the bottom middle of the screen.
2. Click the square “CC” icon towards the right side of the menu to toggle captions on.
3. Click the submenu ^ arrow to access more settings including language, font color and font size.



# ASL Interpretation

- ▶ In the effort to continue to center equity there is an ASL interpreter in addition to closed captioning.
- ▶ To make sure the interpreter is always visible please right click their video and select spotlight video.
- ▶ For those watching on YouTube, when we screenshare, you will be able to see the slideshow, closed captioning and the ASL interpreter. You will still be able to hear different people speaking but may not see them.

# Public Input Instructions

- ▶ There will be an opportunity to provide brief public input later in the meeting today (around 9:50 AM).
- ▶ Verbal public comment will be welcome in the Zoom webinar during the designated time, with the option to turn on your camera.
  - Please use the link located in the meeting description on the YouTube meeting page or on the IBR CBAG meeting webpage.
  - Commenters will not be allowed to share their screens and will be removed from the room once the public comment period concludes.
- ▶ **To comment by phone:**
  - Dial: +1 646 931 3860 US or 408-638-0968
  - Enter meeting ID: 823 5803 3783, passcode: 385815
  - Dial \*9 to raise your hand
  - After you are invited to speak, dial \*6 to unmute yourself.

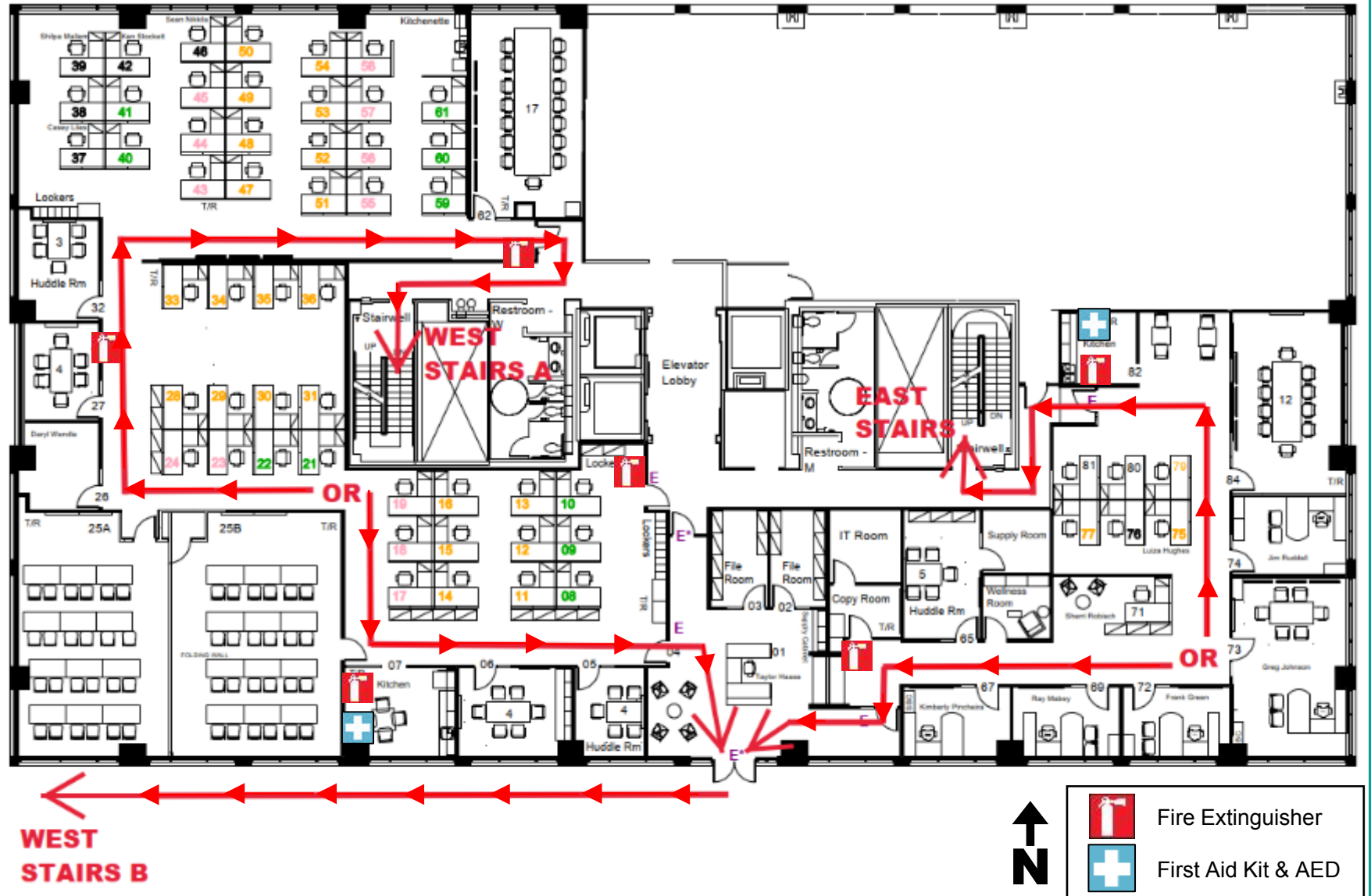


# Safety: IBR Office Emergency Procedures

## In an Emergency:

- ▶ Call 911
- ▶ Assist with:
  - CPR / AED
  - First Aid
  - Fire Extinguisher
- ▶ Evacuate (if needed)
- ▶ Wait for Emergency Responders

Office Address:  
500 Broadway St.  
Suite 200  
Vancouver, WA





# Safety: Evacuation Gathering Place

**GATHERING PLACE**



# Group Agreements

- ▶ Put relationships first
- ▶ Keep focused on our common goal
- ▶ Notice power dynamics in the room
- ▶ Create a space for multiple truths & norms
- ▶ Be kind and brave
- ▶ Practice examining racially biased systems and processes
- ▶ This is a learning space for everyone, look for learning
- ▶ Advisory group members will turn cameras on as you share this space together
- ▶ Take care of your personal needs as they come up. Let the facilitator know if you need to step away.
- ▶ Virtual participant can participate by taking written notes, and using the 'Raise Hand' and 'Speak' features for active engagement
- ▶ Welcome diverse perspectives; it's okay to disagree
- ▶ Move Up, Move Up
- ▶ Assume and have good intentions





# Welcome CBAG Members

Frank Green, Assistant Program Administrator

# CBAG Sharing

- ▶ Welcome
  - Frank Green, Assistant Program Administrator
  - Mayor Anne McEnery-Ogle, City of Vancouver
  - Commissioner Mingus Mapps, City of Portland
- ▶ Introductions – CBAG Members
  - Please introduce your name, organizational affiliation or at large status, and pronouns
  - Check-in question - If you could live somewhere for one month with your expenses paid, where would you go?

# Meeting Agenda

Time	Topic
9:30 a.m.	<ul style="list-style-type: none"><li>• Call to order</li><li>• Welcome &amp; introductions</li><li>• Meeting overview and outcomes</li></ul>
9:50 a.m.	<ul style="list-style-type: none"><li>• Public comment</li></ul>
10:00 a.m.	<ul style="list-style-type: none"><li>• Program update</li></ul>
10:05 a.m.	<ul style="list-style-type: none"><li>• Presentation on Health Analysis<ul style="list-style-type: none"><li>○ Q&amp;A</li></ul></li></ul>
10:35 a.m.	<ul style="list-style-type: none"><li>• Presentation on potential community benefits in the Physical Design category</li></ul>
10:40 a.m.	<ul style="list-style-type: none"><li>• Small group discussion – Brainstorm potential benefits</li></ul>
11:15 a.m.	<ul style="list-style-type: none"><li>• Large group report</li></ul>
11:25 a.m.	<ul style="list-style-type: none"><li>• Closing and next steps</li></ul>



# Public Comment

# Comment Instructions

## To make a verbal comment:

- ▶ To make a live comment via phone, dial: +1 646 931 3860 or +1 408 638 0968
  - ▶ Meeting ID: 823 5803 3783
  - ▶ Passcode: 385815
- ▶ Dial \*9 to raise your hand
- ▶ The facilitator will call on participants to provide comment
- ▶ Dial \*6 to unmute yourself
- ▶ Please provide your name and affiliation
- ▶ 10-minute timeframe will be divided among the number of requested speakers

**If we run out of time and you have not had a chance to speak, you can still provide comments after the meeting.**





# Comment Instructions

## To submit comments after the meeting:



- ▶ Fill out the comment form on the program website or email your comments to **info@interstatebridge.org** with “CBAG Public Comment” in the subject line.



- ▶ Call **360-859-0494** (Washington), **503-897-9218** (Oregon), **888-503-6735** (toll-free) and state "CBAG Public Comment" in your message.
- ▶ Written comments need to explicitly say “**CBAG Public Comment**” in the subject line or in the body of the message for them to be identified and distributed to CBAG members.
- ▶ All written comments must be received prior to 48 hours in advance of each upcoming meeting in order to be distributed to advisory group members. Comments received after that point will be distributed to members in advance of their next meeting.



# Program Update

Frank Green, Assistant Program Administrator

# Recent Activities

- ▶ IBR program awarded \$1.499 billion Federal Highway Administration's Bridge Investment Program (BIP) grant
- ▶ Tours
  - Walking tour with Oregon Walks, The Street Trust and Cycle Vancouver
  - Bridge tours with IBR advisory group members
- ▶ Recent presentations
  - Hough Neighborhood Association
  - City of Vancouver: Culture, Arts & Heritage Commission, Urban Forestry Commission, Downtown Redevelopment Authority, Planning Commission
- ▶ Summer tabling
  - Saturday in the Park (Vancouver Pride)
  - Mississippi Street Fair
- ▶ Industry outreach
  - Association of Women & Minority Businesses





# Health Analysis

Chris Regan, IBR Environmental Manager

Washington State Department of Health:

Alyssa Shaw, MSW, Environmental Health Assessment Team Lead

Anna Caudill, MPH, Environmental Health Evaluations Specialist

# Considering Potential Health Impacts

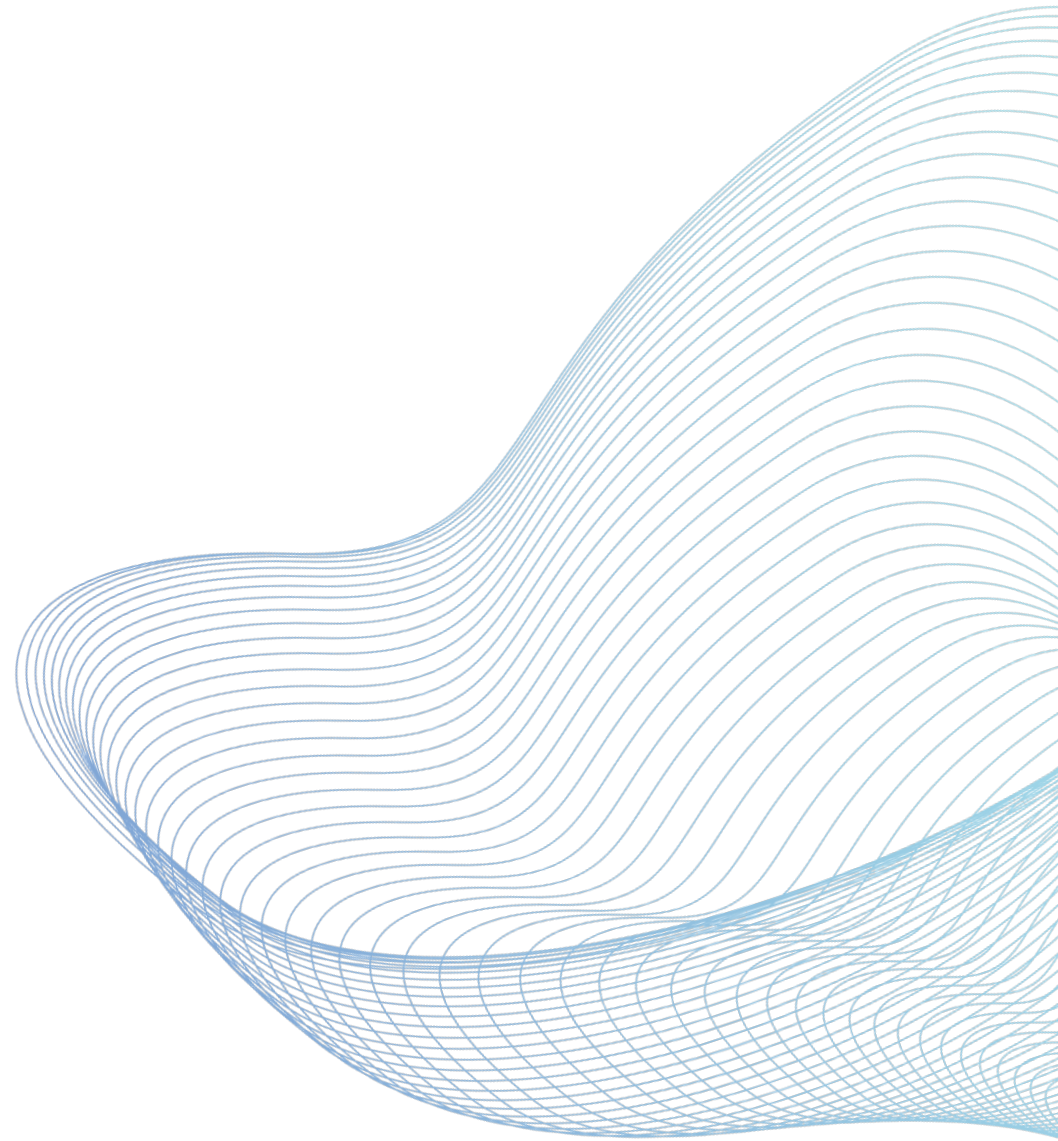
- ▶ **The program is committed to analyzing impacts to human health as a result of the IBR program.**
  - As a program, we seek first to avoid harm to the environment and human health and avoid disproportionate impacts to equity priority communities living adjacent to the program corridor.
- ▶ **The program is considering community health through several areas including:**
  - Safety considerations in design and usability
  - Climate
  - Workforce planning
- ▶ **In the Draft SEIS, we are evaluating impacts of air quality pollutants, GHG emissions, noise and vibration impacts on the community.**
  - Other health-related topics under analysis include exposure to contaminated materials/sites, safety considerations for the transportation facilities/operations including highway, transit, active, navigation and air travel, etc.



# Health Analysis and the Draft SEIS

- ▶ Jurisdictional partners and community groups expressed interest in a Health Impact Assessment (HIA) for the IBR program to better understand potential health impacts on local communities.
- ▶ In late 2023, the Washington Department of Health agreed to lead a third-party Health Analysis of the Modified LPA in cooperation with the Oregon Health Authority, Clark County and Multnomah County.
- ▶ The final Health Analysis will be submitted as a public comment when the Draft SEIS is published later this year.

# HEALTH ANALYSIS



# OUR TEAM

Collaboration between state-level  
and county-level public health

About 10 individuals dedicating time

This is an independent group  
conducting an independent analysis



Consultation was offered to all federally  
recognized tribes in Washington and Oregon

# HEALTH IMPACT ASSESSMENTS

They look at a proposed project or issue in a comprehensive manner.

They provide health and equity information to decision makers to inform a health-focused decision making process.

They are evidence based.

1	Screening	Identifying if an HIA would be useful for a proposed plan, project, or policy decision
2	Scoping	Planning the HIA (resources, timeline, etc.) and identifying what health risks and benefits to consider
3	Assessment	Identifying baseline conditions, potential health risks and benefits of the decision, and affected populations
4	Recommendations	Suggesting practical actions to promote positive health effects and minimizing negative health effects
5	Reporting	Presenting results and recommendations to decision makers, affected communities, and other stakeholders
6	Monitoring and Evaluation	Determining the HIA's impact on the decision and health status

# HIA --> HEALTH ANALYSIS

For the Interstate Bridge Replacement Program, we are conducting a modified “health analysis” keeping to the structure of health impact assessments (HIA).

A full HIA would take 2 years to complete.

We will be submitting our report as a public comment to the Draft Supplemental Environmental Impact Statement (DSEIS).

1	Screening	Identifying if an HIA would be useful for a proposed plan, project, or policy decision
2	Scoping	Planning the HIA (resources, timeline, etc.) and identifying what health risks and benefits to consider
3	Assessment	Identifying baseline conditions, potential health risks and benefits of the decision, and affected populations
4	Recommendations	Suggesting practical actions to promote positive health effects and minimizing negative health effects
5	Reporting	Presenting results and recommendations to decision makers, affected communities, and other stakeholders
6	Monitoring and Evaluation	Determining the HIA's impact on the decision and health status



# METHODS

Literature review

Analyzing local health data to understand present health conditions

Reviewing potential health impacts in project design, construction, and long-term life of project

Considering environmental justice and health equity concerns

**Qualitative data collection through community engagement with advisory groups**

# TOPIC AREAS

- **Air quality**
- **Transportation and active transportation**
- **Climate and heat**
- **Noise**
- **Social determinants of health**
- **Water quality**

**Each section assesses equity and environmental justice related to the topic area.**

# QUESTIONS FOR ADVISORY GROUP

**What health concerns have you heard from the community in regard to this project?**

# QUESTIONS FOR ADVISORY GROUP

**Based on your experience and lived experience, what health concerns do you have related to this project?**

# QUESTIONS FOR ADVISORY GROUP

**Are there any recommendations for the IBR program you would like to see based on community health concerns?**



# QUESTIONS FOR ADVISORY GROUP

**Is there anything missing from our list of topic areas that you would expect to be covered in a health analysis?**

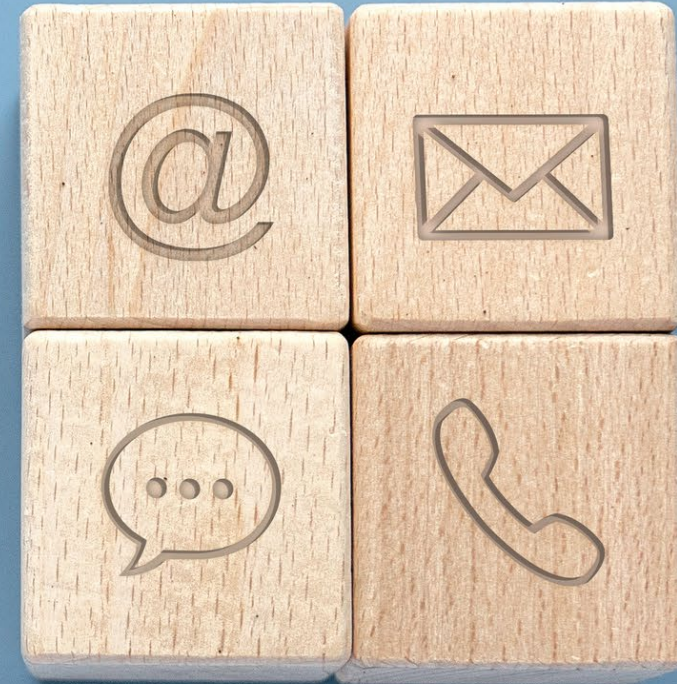
- Air quality
- Transportation and active transportation
- Climate and heat
- Noise
- Social determinants of health
- Water quality

**Each section assesses equity and environmental justice related to the topic area.**

# QUESTIONS?

Contact us

[EHAassessment@doh.wa.gov](mailto:EHAassessment@doh.wa.gov)



Please don't hesitate to follow up with additional thoughts.



# IBR Community Benefits Examples

## Physical Design

Emilee Thomas-Peralta, Equity Team

# IBR Equity Objective

- ▶ **Physical Design:** Integrate equity, area history, and culture into the physical design elements of the program including bridge aesthetics, artwork, amenities, and impacts to adjacent land uses.

# Examples of Potential Community Benefits

## ► Physical Design:

- Create connectivity to Fort Vancouver as part of the bridge's design.
- Include rich landscaping of native plants and flowers that will both beautify the space and make it a desirable destination.



# Breakout Session in Progress

We will return in 35 minutes.





# Large Group Report

# What's Next?

# CBAG Workplan

- ▶ August 22, 2024, Portland Building
  - Workforce Equity and Economic Opportunity (Brainstorm)
- ▶ September 26, 2024, IBR Office
  - Avoid Further Harm (Review/Refine)
- ▶ October 24, 2024, Portland Building
  - Community Benefits (Review/Refine)
- ▶ November 14, 2024, IBR Office
  - Community Benefits (Review/Refine)

# Upcoming Meetings

- ▶ Community Advisory Group (CAG)
  - August 8, 2024 – 4:00-6:00 PM
- ▶ Bi-state Tolling Subcommittee (Transportation Commissions)
  - August 16, 2024 – 1:00-3:00 PM
- ▶ Community Benefits Advisory Group (CBAG)
  - August 22, 2024 – 9:30-11:30 AM



# Wrap up

## Final Thoughts



# Thank you!