



IBR Executive Steering Group Meeting

July 15, 2021

10:00 a.m. – 12:00 p.m.

www.interstatebridge.org

Closed Captions in English and Spanish

English closed captions are available within Zoom and YouTube.

Users can follow this link to view both English and Spanish captions in a separate browser window:

<https://ibr.news/captions>

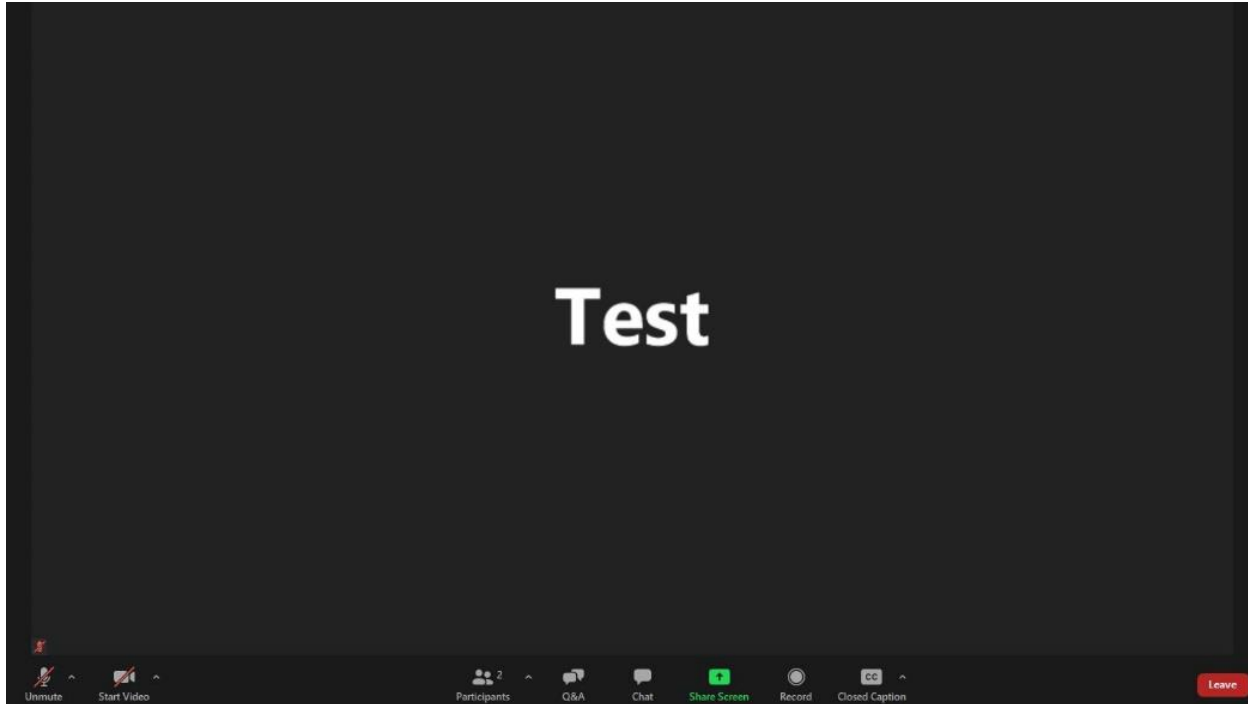
Subtítulos disponible en Inglés y Español

Los subtítulos en Inglés están disponibles en Zoom y YouTube.

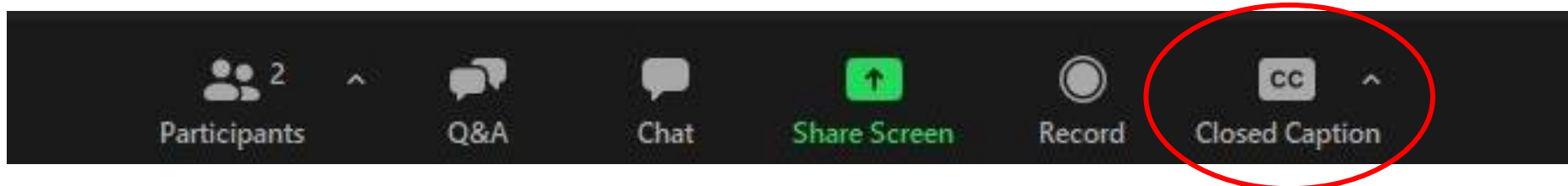
Usuarios pueden seguir este enlace para ver los subtítulos en Inglés y Español en una ventana separada del navegador:

<https://ibr.news/captions>

How to access closed captions



1. At the bottom middle of your screen, you should see a menu of options. If you can't see the menu, hover your mouse over the bottom middle of the screen.
2. Click on the “CC” icon and a separate window with captions will appear.



Webinar Participation Tips

- ▶ Thank you for joining us today!
- ▶ Please join audio by either phone or computer, not both. We encourage panelists to turn on your video.
- ▶ Please keep your audio on mute when not speaking.
- ▶ Before speaking, please state your name and affiliation to help attendees identify who is talking.
- ▶ If you experience technical difficulties, please contact program staff at:
(360) 329-6744

Public Input Instructions

- ▶ There will be an opportunity to provide brief public input later in the meeting today.
- ▶ To submit input after the meeting:
 - Email comments to info@interstatebridge.org with “ESG Public Comment” in the subject line
 - Call 888-503-6735 and state “ESG Public Comment” in your message





Welcome, Introductions, and Brief Updates from Around the Region

Welcome and Updates

- ▶ **Greg Johnson, Program Administrator**
 - Welcome and program updates
- ▶ **Executive Steering Group Members**
 - Regional updates
- ▶ **Deb Nudelman, Facilitator**



Meeting Agenda

Time	Topic
10:00-10:15 am	Welcome, Introductions, Proposed Agenda, and Updates
10:15-10:45 am	Information and Discussion: Framing Climate
10:45-11:00 am	Information: Community Advisory Group Progress
11:00-11:40 am	Information and Discussion: Iterative Progress Towards the IBR Solution
11:40-11:50 am	Opportunity for Public Input
11:50-12:00 pm	Confirm Upcoming Meeting Topics, Highlight Program Activities, Next Steps, and Summary
12:00 pm	Adjourn

Meeting Ground Rules

- ▶ Honor the agenda
- ▶ Listen to understand and ask questions to clarify
- ▶ Focus on the substance and content, soft on people and their style
- ▶ Seek common ground
- ▶ Provide a balance of speaking time



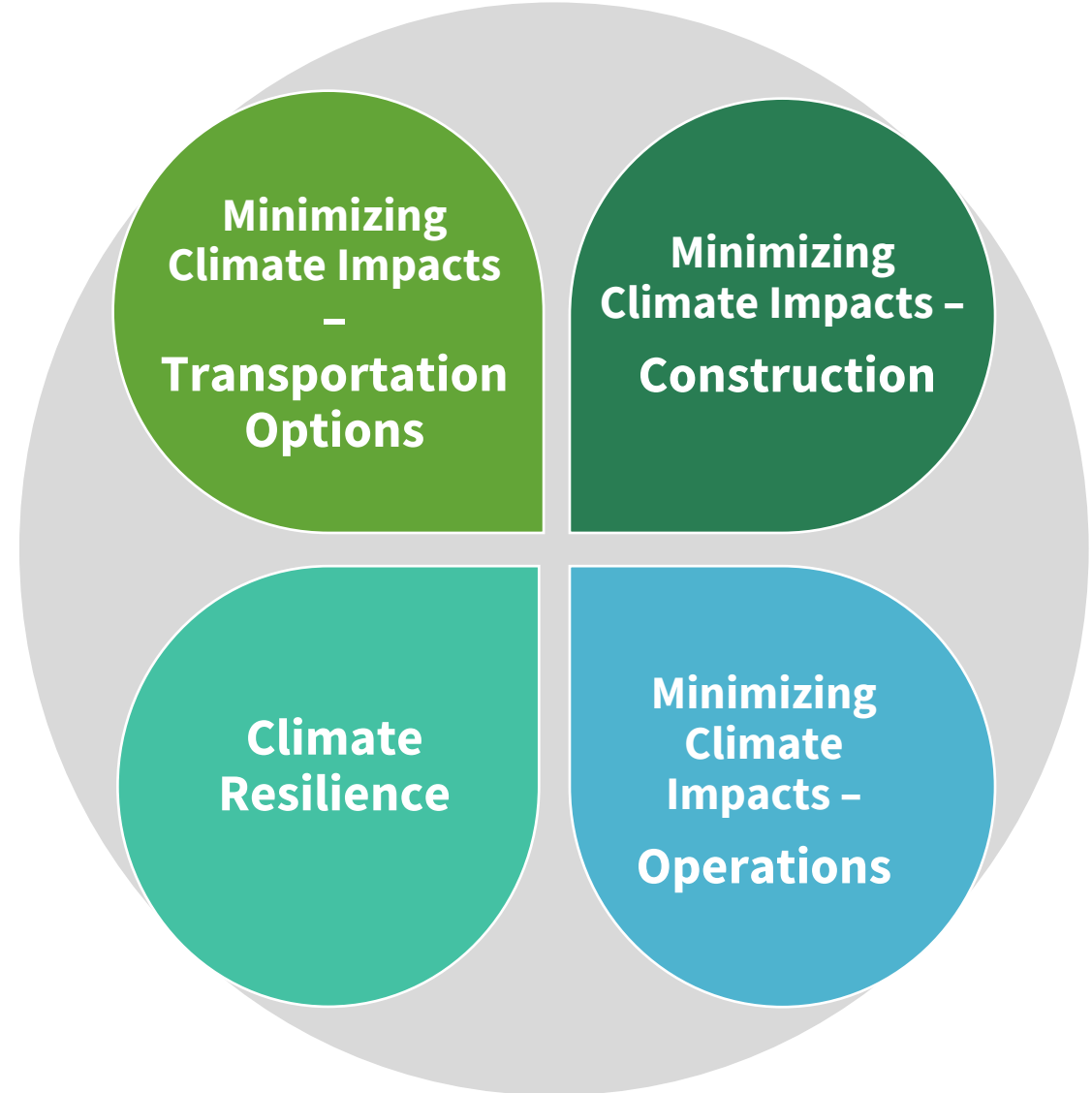


Framing Climate

Sarah Ogier, Principal Climate Officer

Topics

1. Climate Context
2. IBR Climate Framework
3. Engagement Opportunities
4. Next Steps



Climate is a priority for partners and community

- Across all methods of engagement, feedback showed widespread agreement that climate was an important priority.
- Climate action is a component of formal policy and practice for Washington, Oregon, and partner agencies across the region.

Vancouver City Council to examine paths to becoming carbon neutral

Posted by Chris Brown | Date: Wednesday, November 25, 2020 | in: News

BE IT FURTHER RESOLVED, that the City of Portland adopts a new target of achieving at least a 50% reduction in carbon emissions below 1990 levels by 2030 and net-zero carbon emissions before 2050. These targets will be carried forward into future Climate Action Plan updates and work plans; and

Climate Impacts – the Current Condition



The current corridor area has:

- ▶ Limited capacity for low and no emission travel modes – walking, rolling, biking.
- ▶ Constrained transit options, connections, limited service, hours, and inefficient travel times deter users from choosing low emission transit options within the project travel path.
- ▶ Slow travel times and congestion – idling vehicles contribute to increasing GHG emissions.



Climate and Equity Nexus

- ▶ Given our equity focus, climate considerations will also be evaluated for disproportionate impacts to communities of concern.
- ▶ Climate driven design and construction elements will be evaluated for inclusivity of DBE firms to ensure the project can create robust opportunities for DBE firms.



IBR Climate Considerations

Two categories of climate considerations:

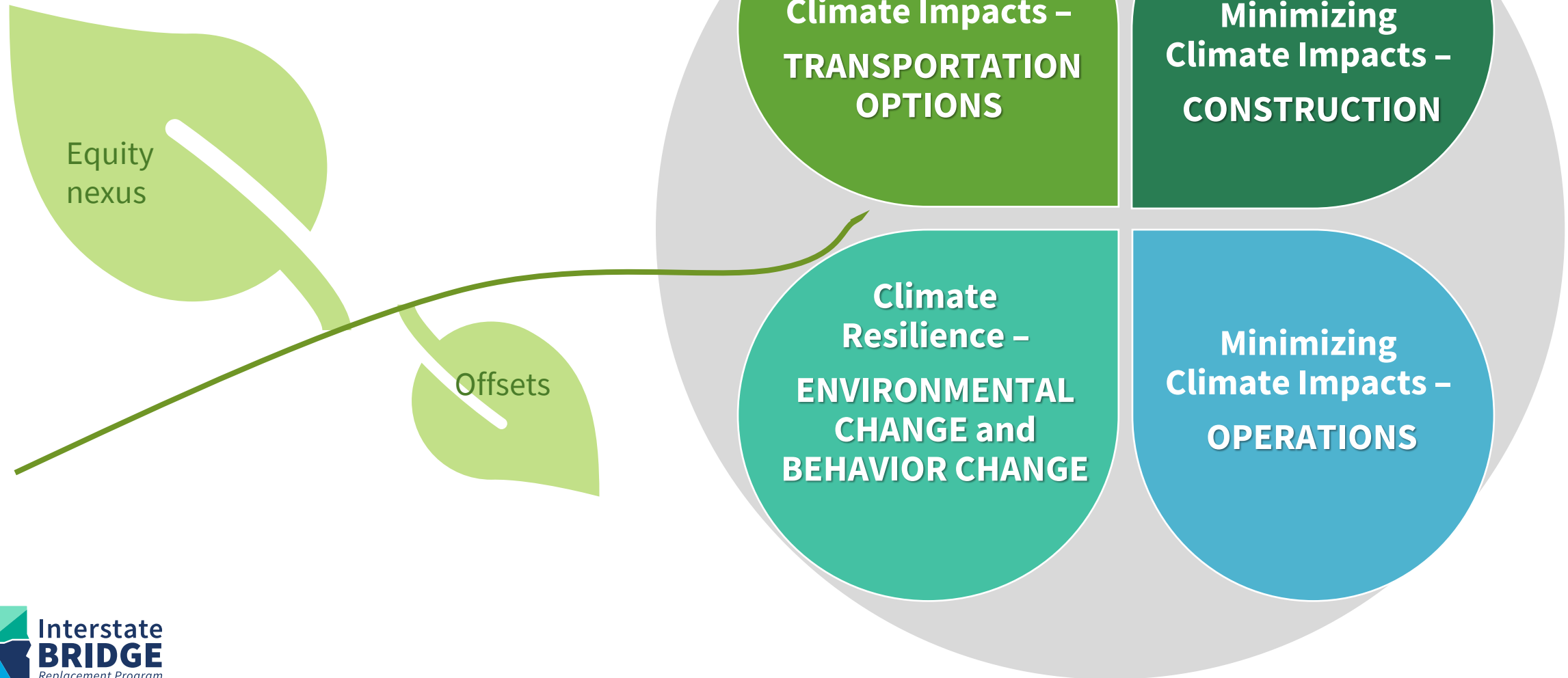
- I. **Minimizing Climate Impacts**
- II. **Addressing Climate Resiliency**

Apply these considerations for:

- ✓ Transportation Options
- ✓ Construction
- ✓ Operations



IBR Climate Framework



Minimizing Climate Impacts –

1) Transportation Options

Minimize IBR traffic vehicle-based emissions

– Minimize travel demand

- *With infrastructure that supports communities with high access to opportunity (walkable communities, complete communities)*
- *Pricing strategies*
- *Travel demand management tools*

– Shift travel demand to low GHG modes

- *Increase access and connections to high-capacity transit*
- *Increase and improve accessibility for bicycle routes*
- *Increase and improve accessibility for people who walk, bike, roll*
- *Design infrastructure to accommodate high efficiency vehicles – charging opportunities, size and speed considerations*

– Improve transportation efficiency

- *Reduce congestion*
- *Design for traffic smoothing*
- *Target moderate speeds for lower emissions*
- *Transportation system management, Intelligent Transportation System (ITS)*



Minimizing Climate Impacts –

2) Construction

Reduce IBR construction-based emissions

- Low E construction methods and materials
- Low E construction equipment and vehicles
- Local manufacturers, source material locally and reduce transport
- Zero waste goals for demolition



Minimizing Climate Impacts –

3) Maintenance and Operations

Minimize emissions associated with ongoing IBR maintenance and operations

- Lifecycle cost analysis for materials and design selection
- Prioritize materials durability
- Renewable power supply
- High efficiency lighting
- Electric vehicle maintenance fleet



Minimizing Climate Impacts –

4) Offsets

Offset unavoidable emissions

- Consider carbon offsets for construction
- Consider carbon offsets for ongoing operations
- Create a robust landscape plan that relies on much higher than traditional tree and planting replacement rates in the public right of way



Climate Resiliency-

1) Environmental Changes

Consider changes in environmental conditions resulting from changes in our climate

- Increased storm intensities > managing stormwater
- Increased river water elevation > bridge footings, boat and barge clearance
- Increased weather extremes > road surfaces, expansion
- Plant survival > native and other resilient species



Climate Resiliency –

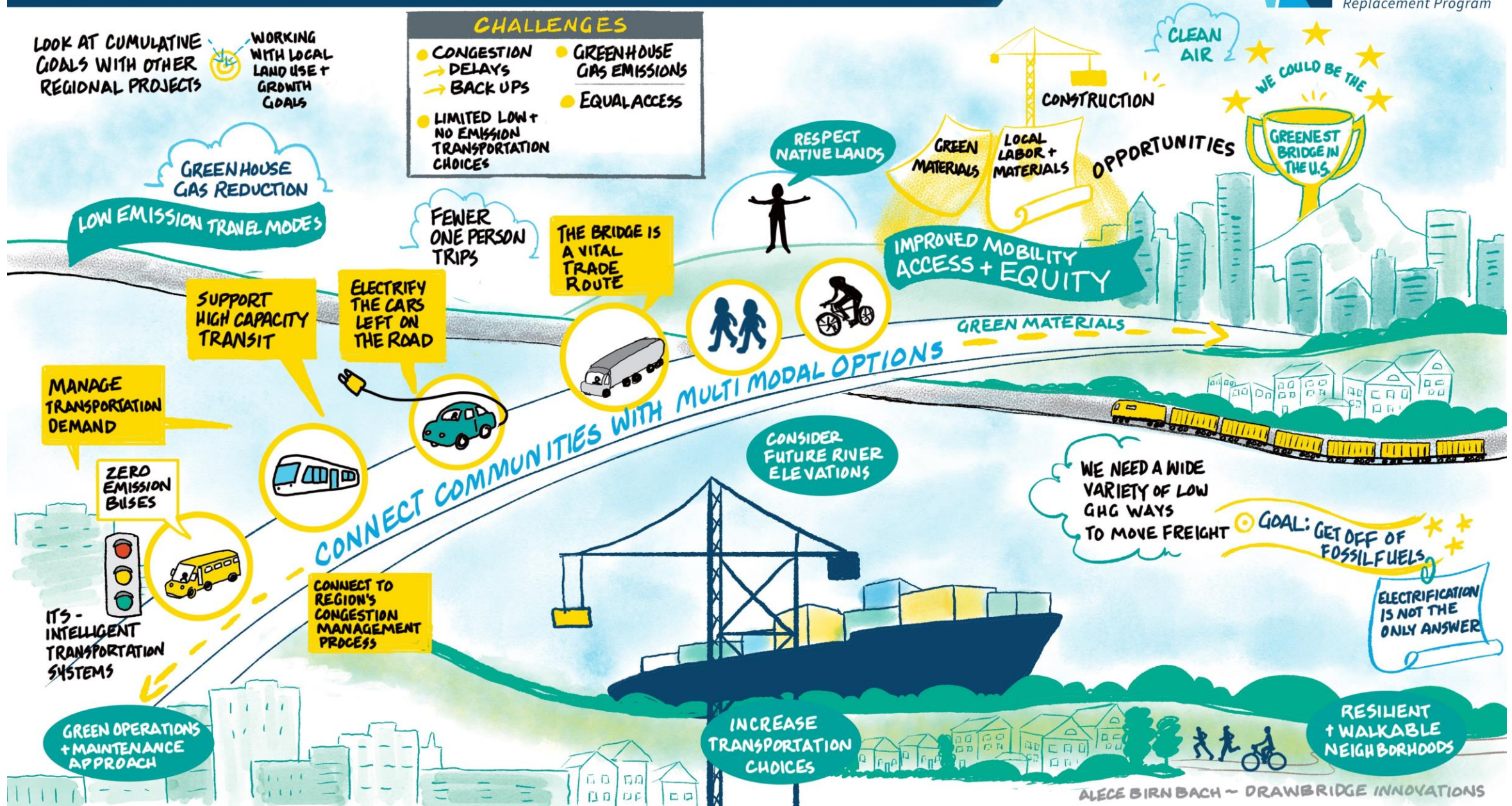
2) Development and Behavioral Changes

Consider climate impacts to future growth and population centers, examples include:

- Climate refugees – possible influx of residents
- Shift from areas of increased flooding
- Shift from areas of increased fire or smoke
- Changing work patterns - shift early/late, cooler hours, telecommute
- Shift of seasonal work and transport of seasonal products, agriculture especially

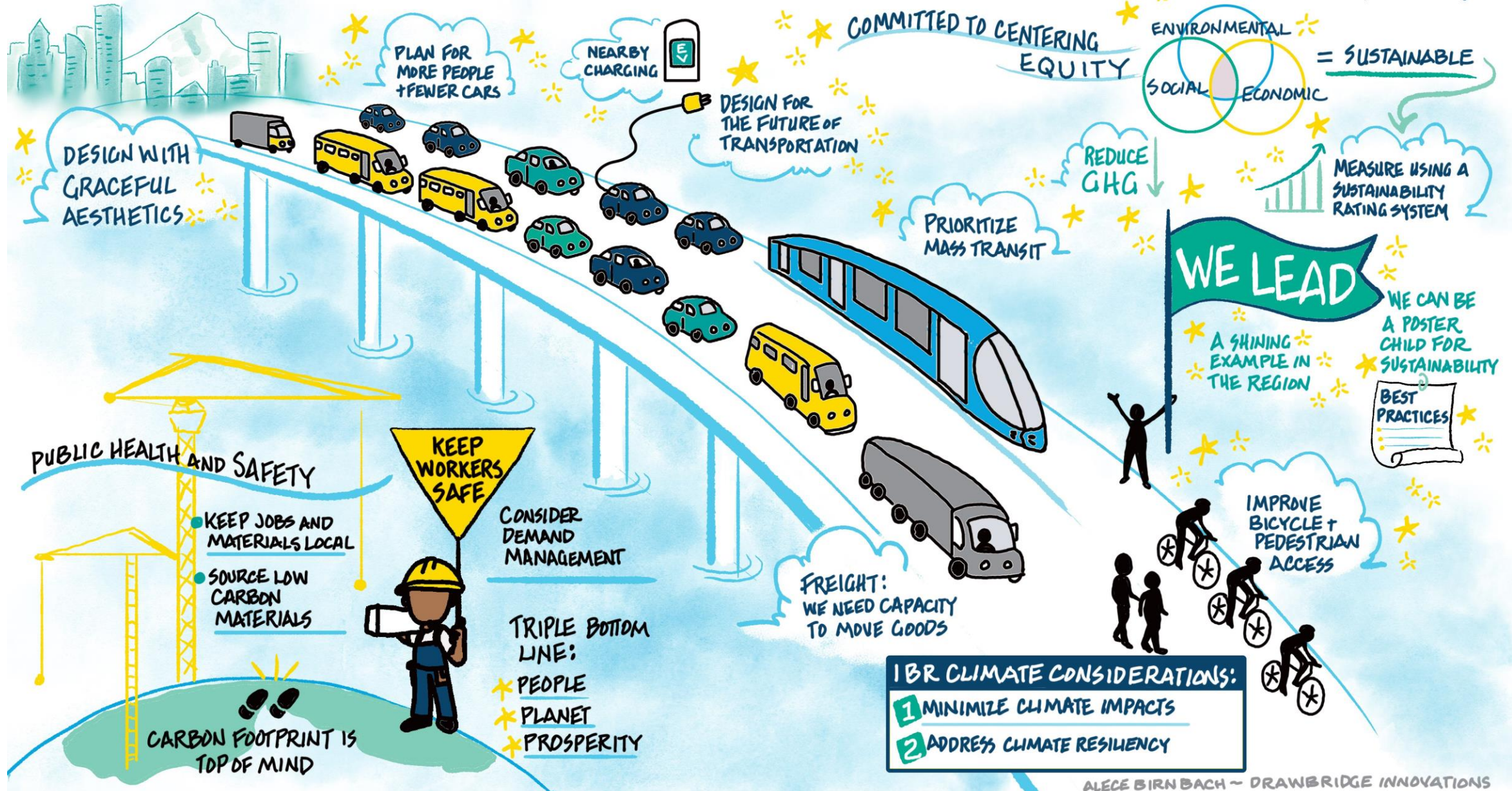


CLIMATE CONSIDERATIONS



JUNE 17 • 2021

SUSTAINABILITY+ CLIMATE LISTENING SESSION



Applying the Climate Framework

- ▶ Climate considerations for all aspects of the program, including but not limited to:
 - Desired outcomes
 - Bridge, highway and transit design
 - Design option screening criteria
 - Program-level performance measures
 - IGAs and Community Benefits Agreements
 - Environmental impacts analysis and mitigation
 - Construction specifications and procurement strategies
 - Program commitments: community enhancements and mitigation

IBR Climate Engagement Looking Forward

- ▶ **June-August 2021**
Work with agency partners to develop and draft Climate Framework components
- ▶ **August 5**
CAG: Review draft Climate Framework and get feedback
- ▶ **August/September**
EAG: High level overview of draft Climate Framework and discuss nexus with Equity
- ▶ **September–December 2021**
Work with agency partners to finalize Climate Framework and use to develop screening criteria, design options, and performance measures.



Group Discussion



Community Advisory Group Progress

Lynn Valenter, CAG Co-Chair
Ed Washington, CAG Co-Chair

CAG Consensus on Community Values & Priorities

► Process:

- Draft Community Values & Priorities (CV&P) developed using feedback from community engagement activities, including:
 - *Community Listening Sessions*
 - *Survey feedback*
 - *CAG meeting feedback, including breakout session notes and group discussion*
 - *Individual CAG member meeting feedback*
- Prior to the April 28 CAG meeting, draft CV&P document was sent to CAG for review
- At the April 28 CAG meeting, draft CV&P was presented to CAG with a breakout session for CAG to discuss and comment
- Consensus was not reached on April 28

CAG Consensus on Community Values & Priorities

► Process:

- Request from CAG to revise CV&P using their comments and bring back at next meeting
- IBR communications team revised CV&P using CAG comments and breakout session notes
- Sub-committee of CAG members with equal state representation formed to review updated CV&P
- Sub-committee finalized CV&P and recommended to CAG at June 3 meeting
- After discussion and Q&A, CAG adopted the CV&P with full consensus

Community Values and Priorities

- ▶ Community values and priorities will be used to develop screening criteria and performance measures:
 - Past transportation projects have caused harm to communities of concern. The program should **center equity** and avoid further harm to communities and individuals. Equity is both an outcome as well as a process.
 - There is a strong correlation between transportation and climate change. The program should advance opportunities to reduce impacts from and improve resiliency to global **climate change**.
 - Transit and active transportation facilities must reflect the needs of all ages and abilities, and remove barriers, including language, to access and ensure availability of **transportation choices**.

Community Values and Priorities

- Creating opportunities for local job creation through apprenticeship and training and career pathways as well as opportunities for BIPOC, women, and DBE businesses and a diverse workforce. Growth and increased access contributes to **economic empowerment** and a thriving economy.
- **Cost effectiveness** should be assessed through concepts of affordability, recognizing future funding challenges, and designing a bridge that will serve future generations beyond our own. Fiscal responsibility throughout program, including emergency technology, should be considered.
- **Congestion** does not just affect personal vehicles; it impacts freight deliveries for companies (small and large), reduces public transit reliability when mixed in traffic, and reduces safety.

Community Values and Priorities

- **Natural resources** should be protected and enhanced including fish and wildlife habitat and water quality. Cultural and historical heritage and resources should be protected and honored
- Foster leadership and **cooperation** between bi-state program partners to improve program outcomes, keeping the bi-state conversation focused to ensure the burden of fiscal responsibility is shared for mutually beneficial outcomes.
- Provide ongoing opportunities for meaningful, equitable and transparent **community engagement**.

Applying Community Values and Priorities

► Shapes Program Outcomes

- Center the equity in the program's process and outcomes
- Improve resiliency to climate change
- Foster leadership and cooperation between bi-state partners
- Provide meaningful, equitable and transparent community engagement

► Identifies Performance Measures

- Provide all modes to increase capacity
- Contribute to economic empowerment

► Defines Screening Criteria

- Reduce congestion
- Provide access to and ensure availability of transportation choices
- Protect and enhance natural resources



Questions?



Iterative Progress Toward the IBR Solution

Frank Green, Deputy Program Administrator
Chris Regan, Environmental Manager

IBR Program Timeline

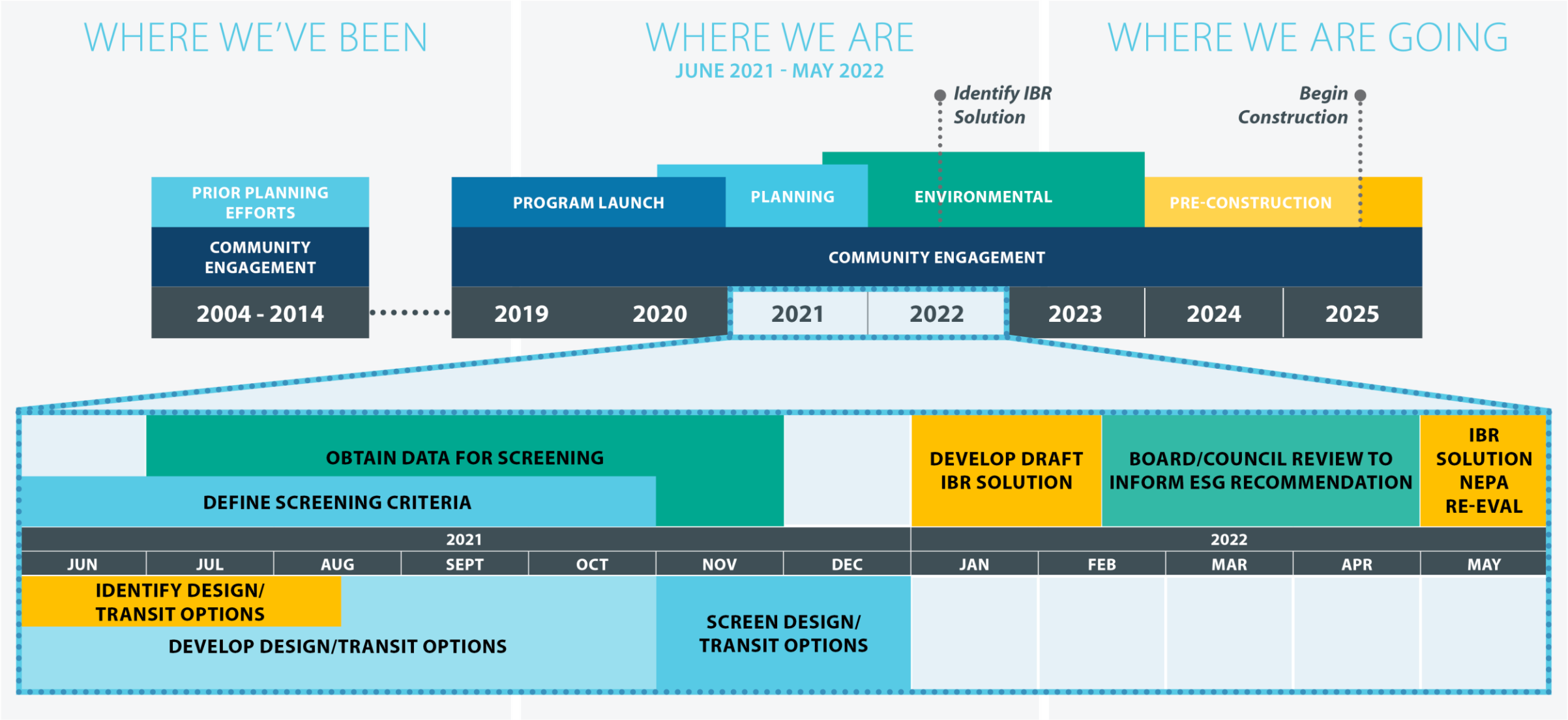


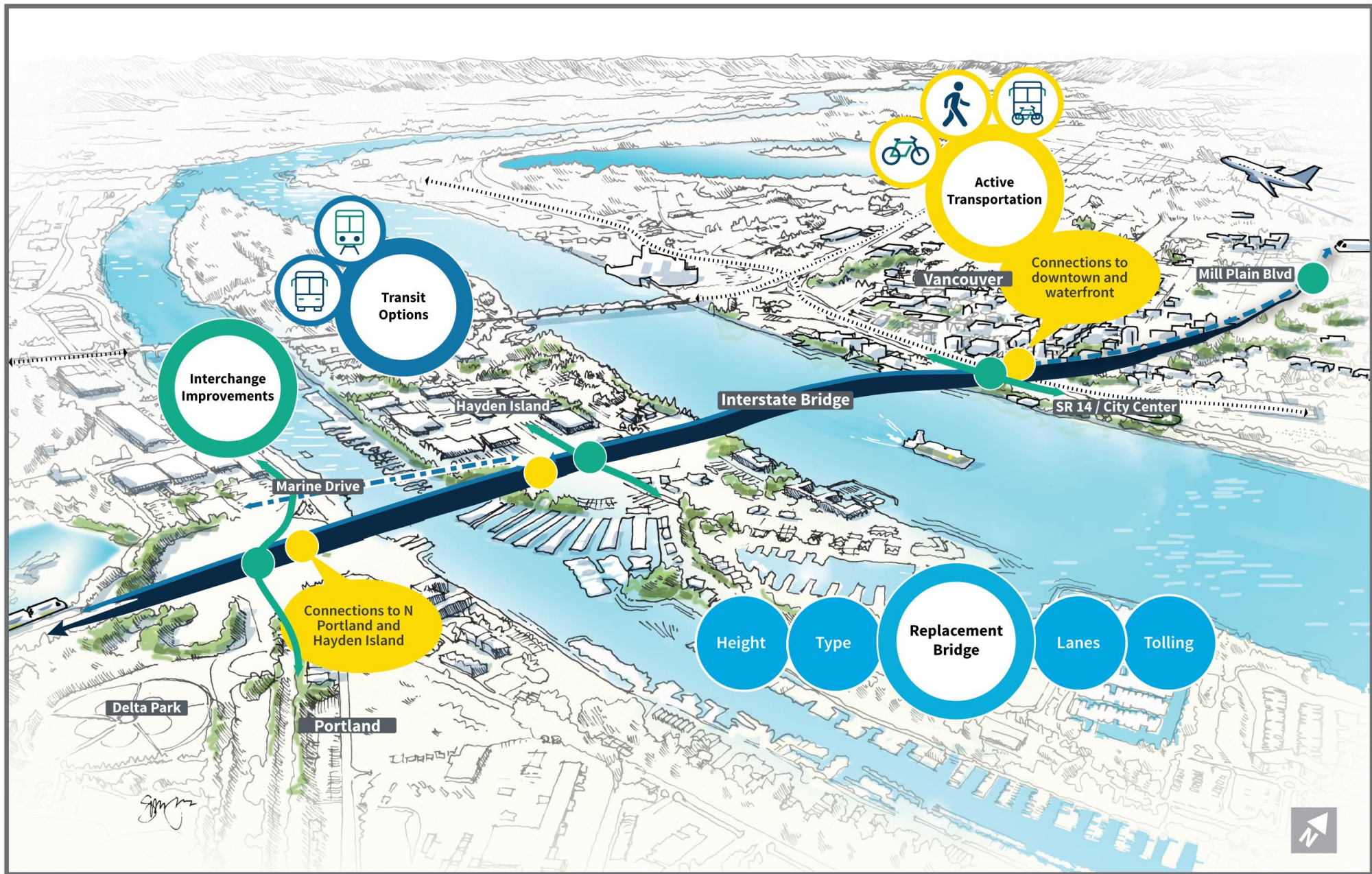
IBR ‘North Star’ Targets:

- ▶ One integrated program that includes:
 - a new river crossing over the Columbia River
 - high-capacity transit,
 - interchange improvements, and
 - active transportation improvements
- ▶ Identify and advance a single IBR alternative by end of 2021
- ▶ NEPA with a goal to achieve a Supplemental EIS
- ▶ Evaluate high-capacity transit options
- ▶ Replace North Portland Harbor I-5 Bridge
- ▶ Begin construction no later than 2025
- ▶ Next: How we will get there...



IBR Program Timeline





Design Options and Alternatives

► Design Options

- Specific design choices that address physical or contextual changes
- Will be considered on their own and in relation to other program elements

Option A

Option B

Option C

► Alternative

- Single combination of design options that, when packaged together, address the identified transportation problems

Definitions

► Program Outcomes

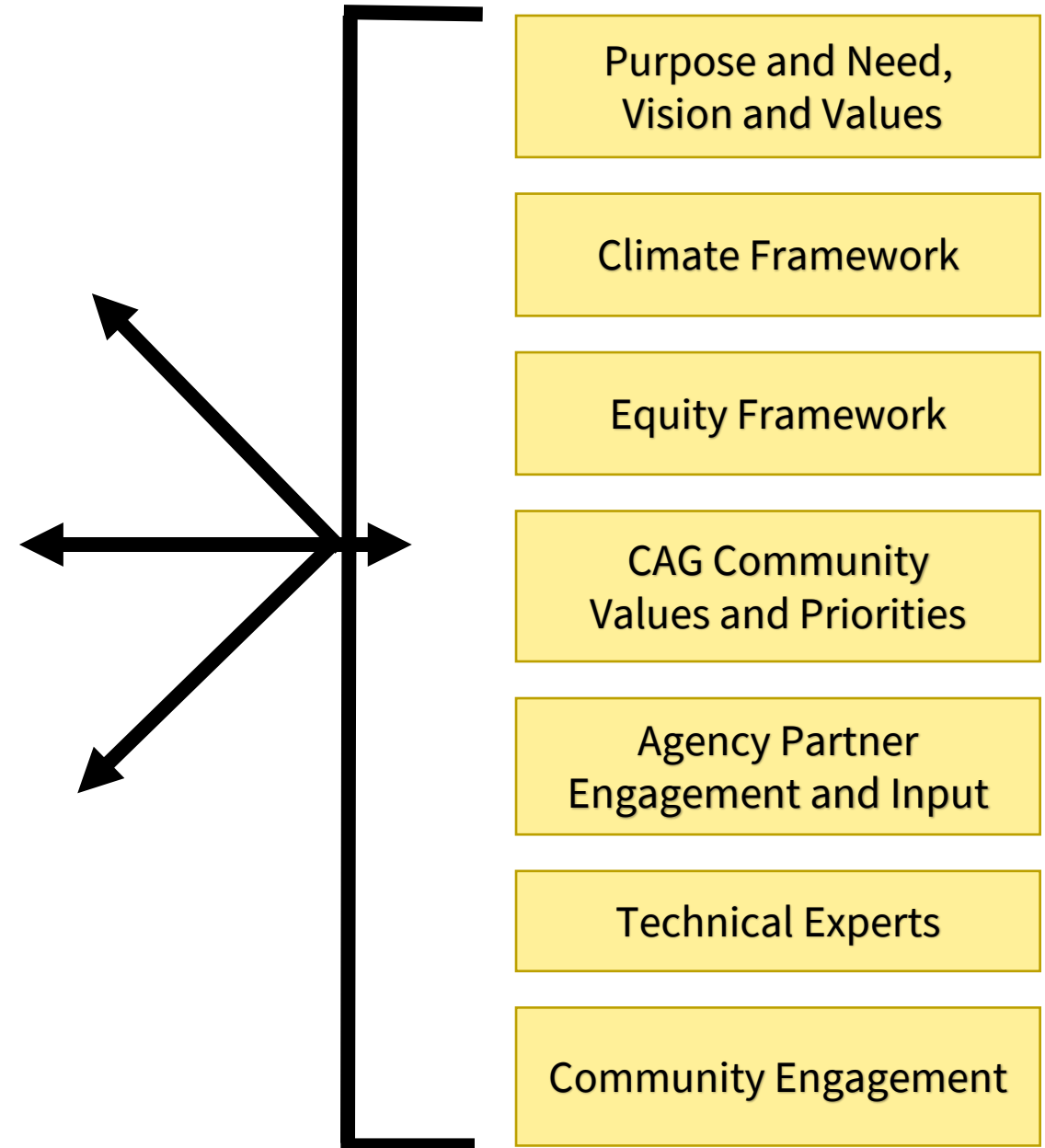
- Observable and measurable accomplishments for the IBR program

► Program-Level Performance Measures

- Indicators to measure the IBR program's success over the lifespan of the program

► Design Option Screening Criteria

- Requirements used to assess the trade-offs or potential impacts among the design options considered



Definitions

► Program Outcomes

- Observable and measurable accomplishments for the IBR program

► Program-Level Performance Measures

- Indicators to measure the IBR program's success over the lifespan of the program

► Design Option Screening Criteria

- Requirements used to assess the trade-offs or potential impacts among the design options considered

Example 1 - Equity

Outcome

Promote economic empowerment for communities of concern

Performance Measure

Percent of construction contract values awarded to DBE firms

Example 2 - Climate

Outcome

Reduce GHG emissions by converting more SOV trips to transit

Screening Criteria

- Projected reduction in percent of vehicular traffic on I-5
- Projected increase in transit ridership

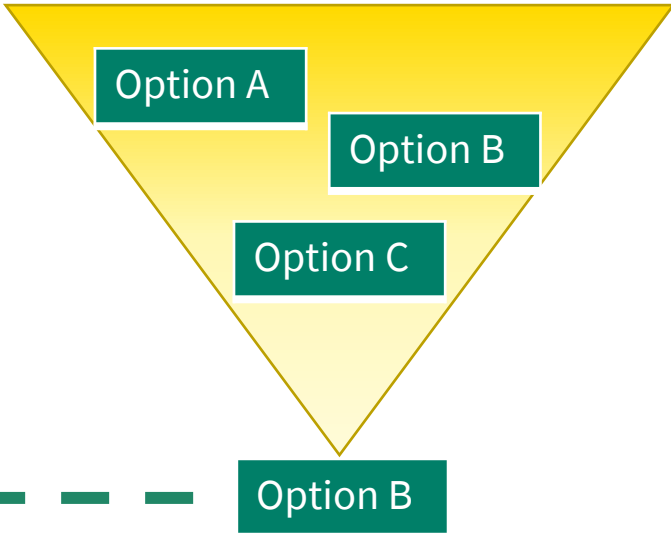
Address Changes with Design Options

Prior Solution

Bridge Design	Bridge Lanes
Bridge Location	Bridge Height
Bridge Connections	Hayden Is Interchange
NPH Bridge	Active Transportation
Transit Mode	Transit Route & Termini
Transit Stations	Transit P&R

Design Option Development & Screening

- Identify changes to physical environment and context
- Develop design options to address changes
- Use data and analysis to evaluate design options
- Engage advisory groups and community
- Share with partners and ESG for Agreements in Principle
- Narrow design options for each change to a single solution



IBR Solution

Example of Baseline Data

Type	Baseline Data:
Base maps	
Past and present aerials	✓
Local/Regional land use plans	✓
Traffic volumes (2019)	
Average weekday daily volumes/person throughput	✓
Average weekday peak period volumes	✓
Duration of I-5 freeway congestion (2019)	✓
I-5 Speeds/Travel times (2019)	✓
Transit (2019)	
Routes	✓
Volumes	✓
Travel times	✓
Reliability	✓
Park and ride location/utilization	✓
Stops/station locations	✓
Intersection volumes/operations (2019) - 60+ intersections	✓
Safety (2015-2019)	✓
Bridge lifts (2015-2019)	✓
Active transportation (2019)	
Facilities	✓
Volumes	✓
Origin destination Patterns (2019)	
Ramp-to-ramp movements	✓
Regional travel	✓
Multimodal travel	✓

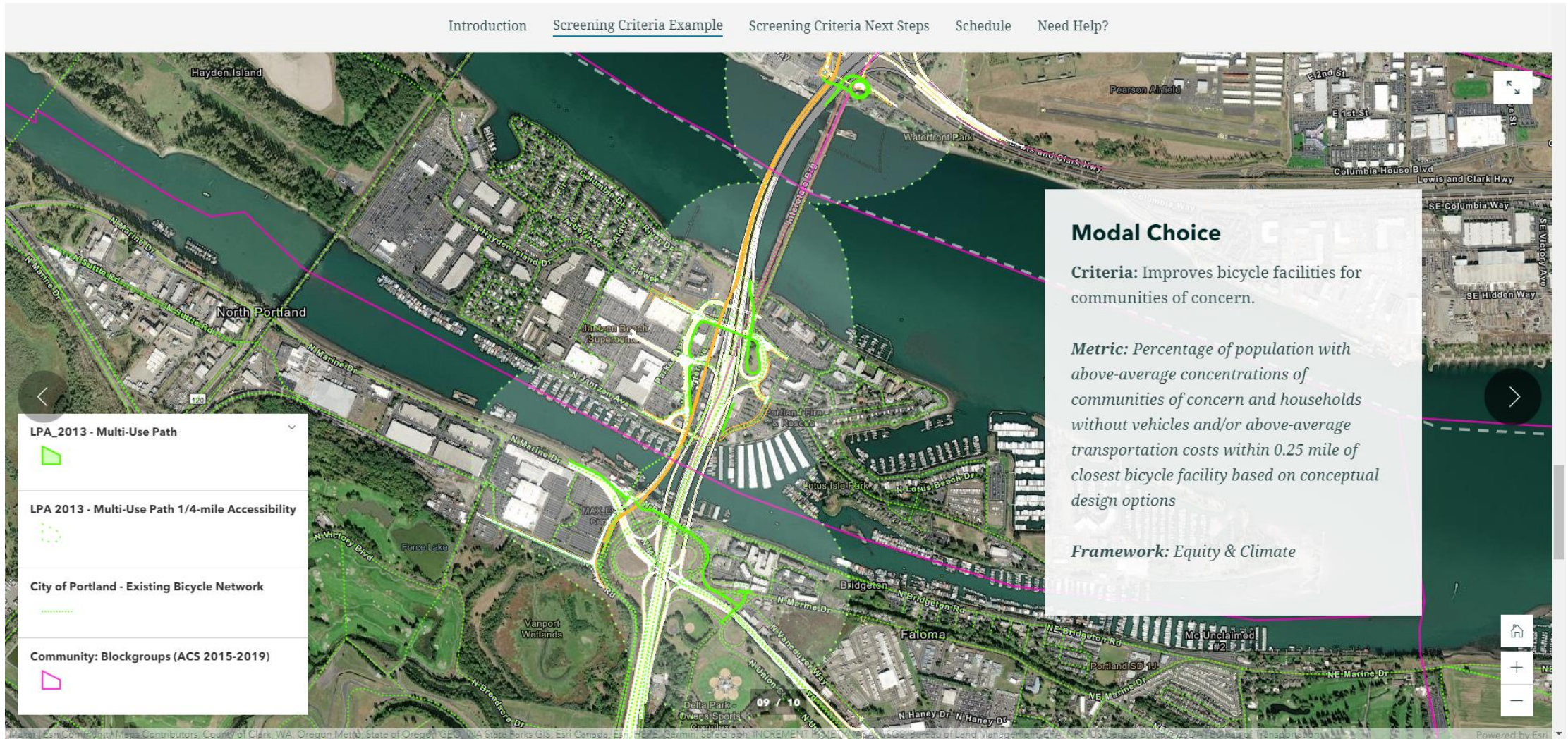
Type	Baseline Data:
Travel demand model (2015/2040/2045)	
Regional outputs - VMT/VHT/VHD, Screenlines, Mode Share	✓
Modal volumes - GP, HOV, Truck, Transit (including peak load, PnR, Mode of Access), Active Transportation	✓
Land Use data (Population/Employment), Accessibility	✓
Park, Recreation, and Trails	
Parks and Open Space	✓
Parks with 6(f) Funding	✓
Trails	✓
Section 4(f) resources	✓
Hazardous materials	
Environmental Database Sites	✓
Known hazardous concerns	✓
Park, Recreation, and Trails	
Parks and Open Space	✓
Parks with 6(f) Funding	✓
Trails	✓
Section 4(f) resources	✓
Hazardous materials	
Environmental Database Sites	✓
Known hazardous concerns	✓

Categories of Screening Criteria

- ▶ Equity
- ▶ Climate
- ▶ Efficient movement of people and goods
- ▶ Environment and community health
- ▶ Cost
- ▶ Constructability
- ▶ Structural

Oftentimes, screening criteria are most useful when they identify the differences among design options. Decisions about which option is selected will be based on the trade-offs that are differentiated among the screening criteria.

Screen Shot: Early Example of Sample Data to be Used for Screening



Map shows 2013 design and does not reflect the IBR solution. Design will be updated as design options are determined.

Next Steps on Screening Criteria

- ▶ Continue to develop and refine screening criteria and associated metrics to evaluate the magnitude of impacts and benefits.
- ▶ Develop design options to address changes or provide other improvements.
- ▶ Inform the design option development with screening criteria – an iterative process to refine options and elaborate key trade-offs.
- ▶ Evaluate design options using screening criteria to identify an IBR solution that will be advanced to the NEPA re-evaluation.

Approach Moving Forward

Screening Criteria

- ▶ **Summer 2021**
Program and partners work to identify and develop design options and screening criteria
- ▶ **Fall 2021**
ESG: Review draft design options and screening criteria to help finalize prior to screening process

Performance Measures and Commitments

- ▶ **2021-2022**
Work to identify and compile performance measures
- ▶ **2022-2025**
Establish program commitments and clear metrics to hold the program accountable on performance measures during construction and operation



Group Discussion

How can we ensure the screening criteria process and use of data:

- ▶ will represent core values?
- ▶ is credible and resonates for program partners?
- ▶ utilizes best practices from around the region?



Opportunity for Public Input

Comment Instructions

To make a verbal comment:

- ▶ If you have joined by Zoom, click “Raise Hand.”
- ▶ If you have joined by phone, press *9 to raise your hand.
- ▶ The facilitator will call on participants. You will receive an “unmute” request. Please accept it. If you are commenting by phone dial *6 to unmute.
- ▶ Please provide your name and affiliation.
- ▶ Attendees will be allocated up to 2 minutes for public comment depending on the number of commenters up to a total of 10 minutes.



If we run out of time and you have not had a chance to speak, you can still provide comments after the meeting.

Comment Instructions

To submit comment after the meeting:

- ▶ Fill out comment form on program website or email comments to info@interstatebridge.org with “ESG Public Comment” in the subject line.
- ▶ Call 888-503-6735 and state "ESG Public Comment" in your message.
- ▶ All written comments must be received prior to 48 hours in advance of each upcoming meeting in order to be distributed to ESG members. Comments received after that point will be distributed to members in advance of their next meeting. All comments are posted on the IBR website.





Confirm Upcoming Meeting Topics, Next Steps, and Summary

FYI: Recent/Upcoming Engagement

- ▶ **May and June Community Listening Sessions**
 - Hayden Island, Freight Movement, Downtown Vancouver, Active Transportation, Sustainability and Climate
- ▶ **Launching Community Working Groups**
 - Multimodal Commuter – Hayden Island/Marine Drive
 - Downtown Vancouver – Active Transportation
- ▶ **The Case for IBR Video and Fact Sheet: interstatebridge.org/case4IBR**
 - Hear why bridge replacement is a high priority for both states and is economically significant
- ▶ **Bridge Stories: interstatebridge.org/bridge-stories**
 - Hear what a replacement bridge would mean to members of the community and to local stakeholders

Next Steps, Action Items, and Summary



- ▶ September ESG meeting date: We inadvertently scheduled on Yom Kippur, so the **Thursday, September 16, 10am-12pm** will be rescheduled, details to follow.
- ▶ Confirm upcoming meeting topics:
 - ▶ Progress and feedback on technical work
 - ▶ Update on legislative communications
 - ▶ CAG and EAG report outs
- ▶ Review action items and summary



Thank you!