

APPENDIX B. MAPS OF THE AMENDED SELECTED ALTERNATIVE

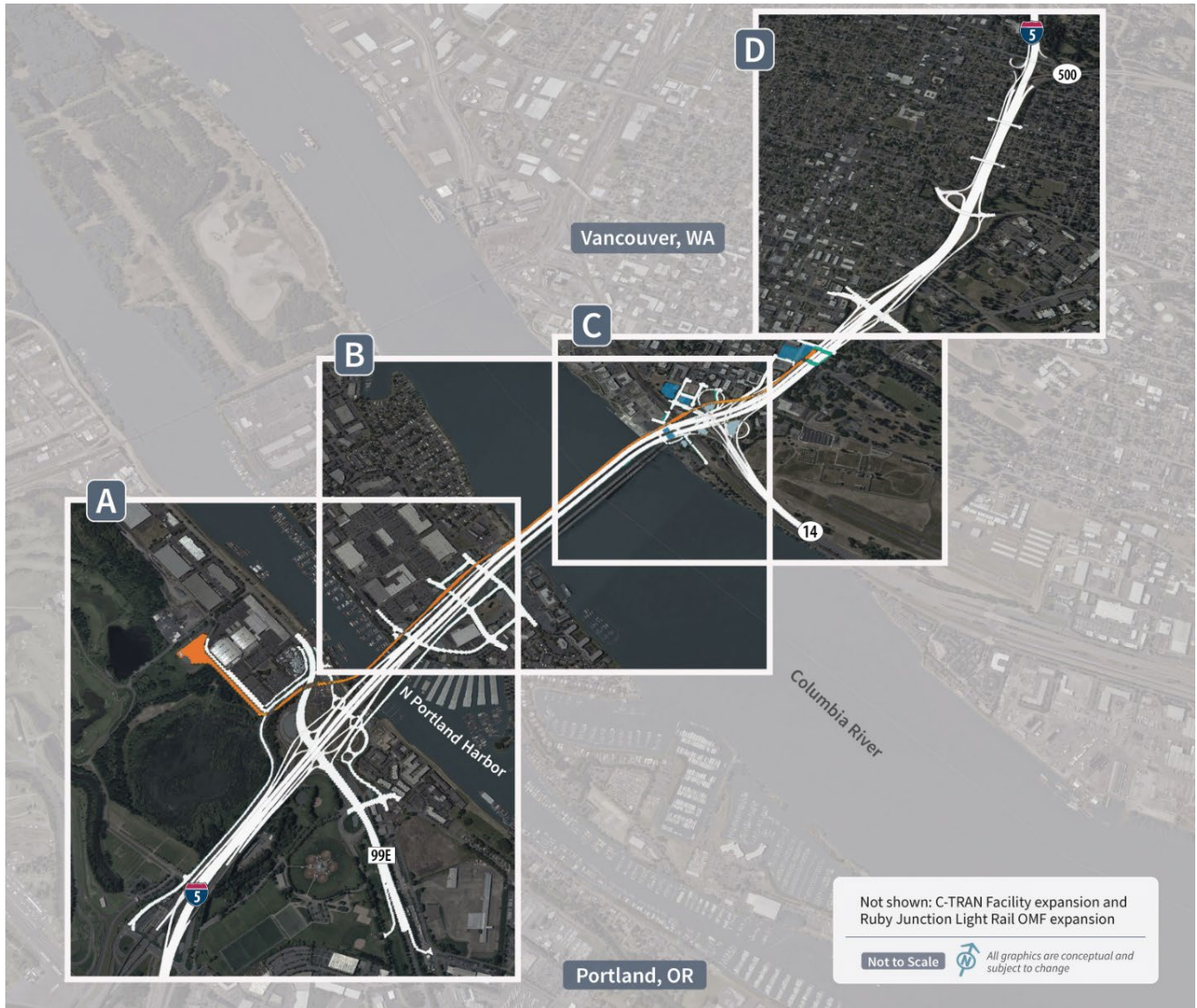
The maps and figures from the Columbia River Crossing Record of Decision are replaced. The following maps and figures illustrate the Interstate Bridge Replacement Program Amended Selected Alternative. Additional information, maps, and figures are included in Chapter 2 and Appendix C of the Final Supplemental Environmental Impact Statement and Section 4(f) Evaluation, and supplement the following maps and figures.

Figure B-1. Amended Selected Alternative Components



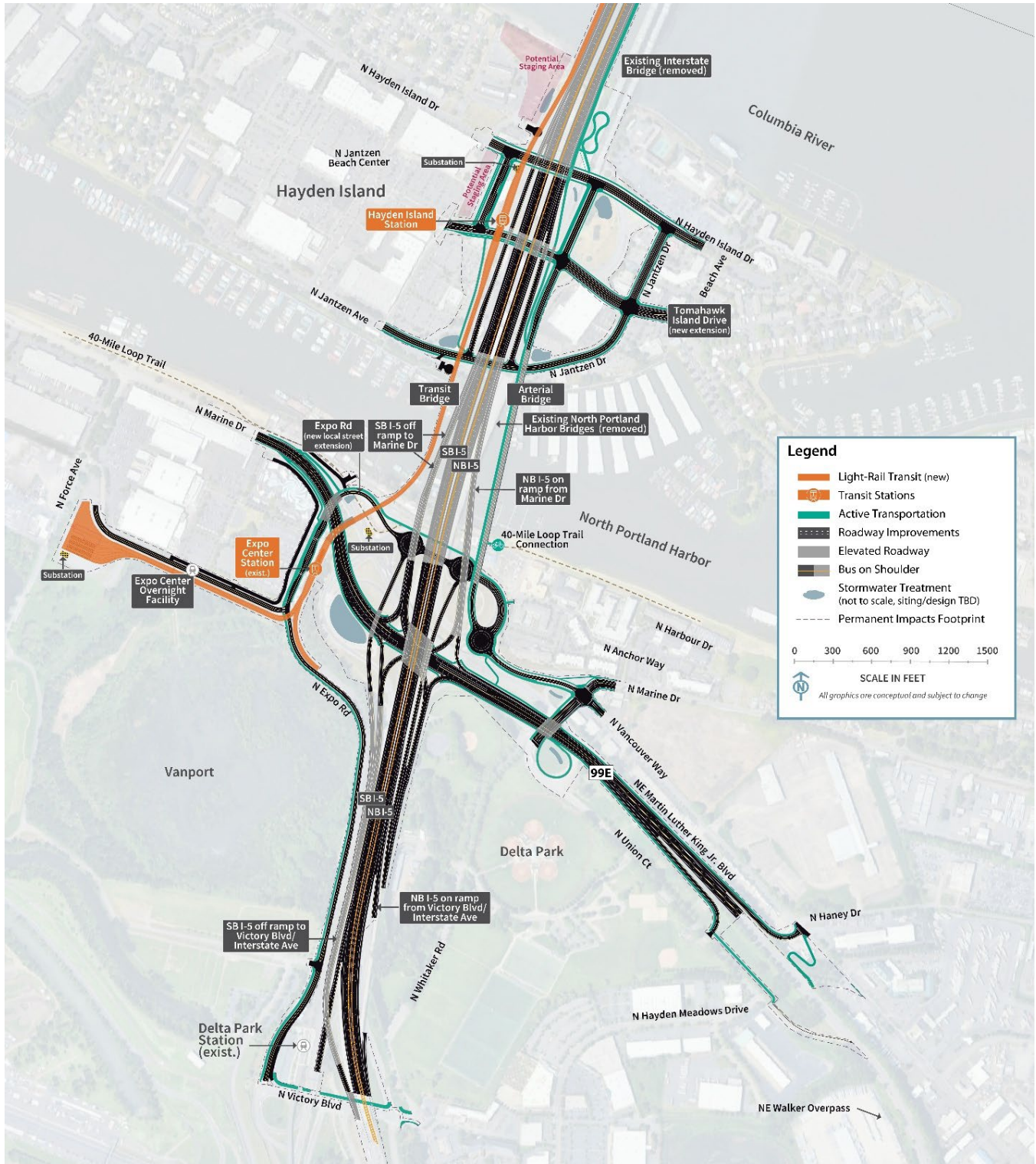
OMF = Operations and Maintenance Facility

Figure B-2. Geographic Subareas



OMF = Operations and Maintenance Facility

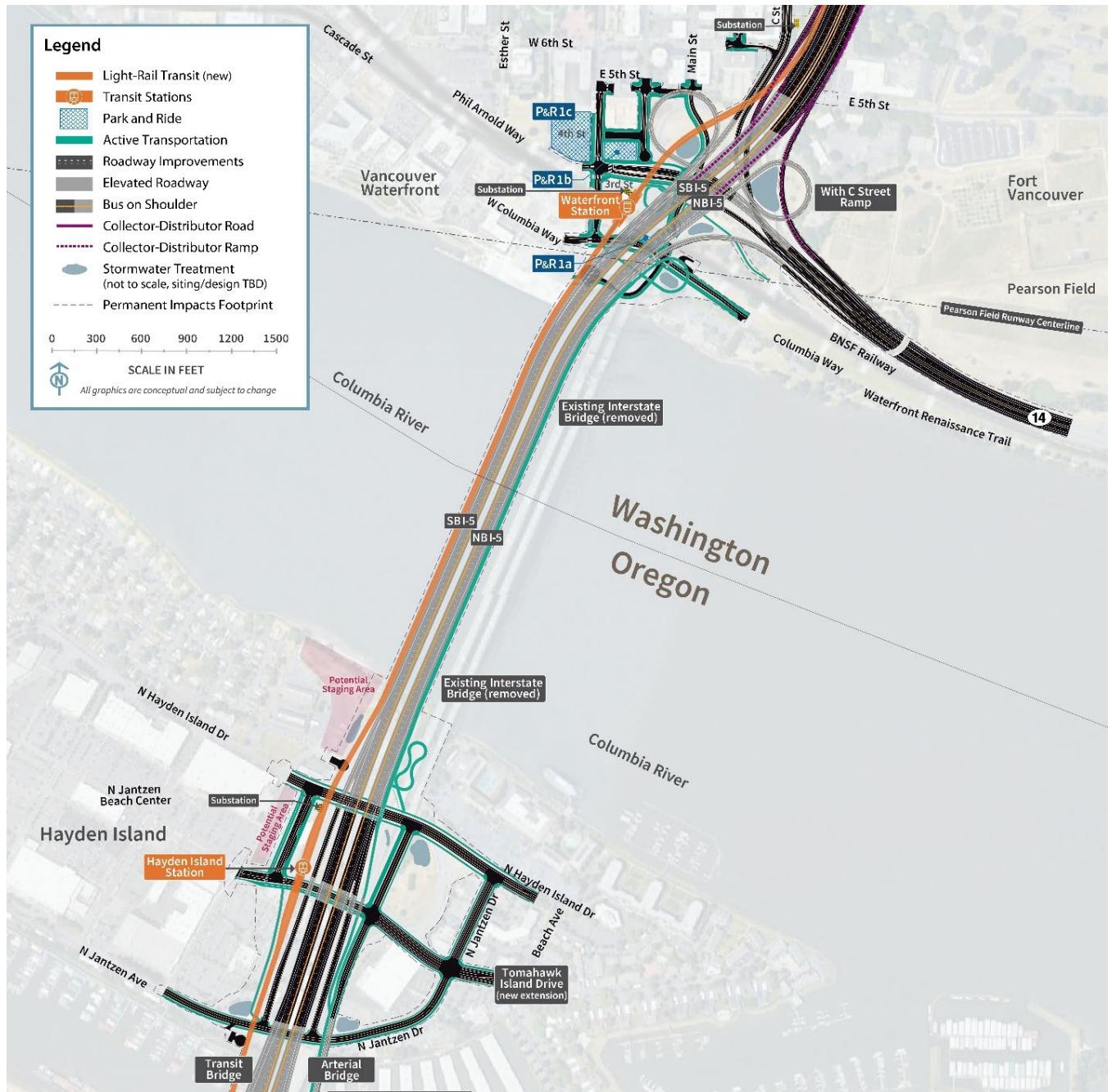
Figure B-3. Portland Mainland and Hayden Island (Subarea A)



exist. = existing; I-5 = Interstate 5; LRT = light-rail transit; NB = northbound; SB = southbound; TBD = to be determined

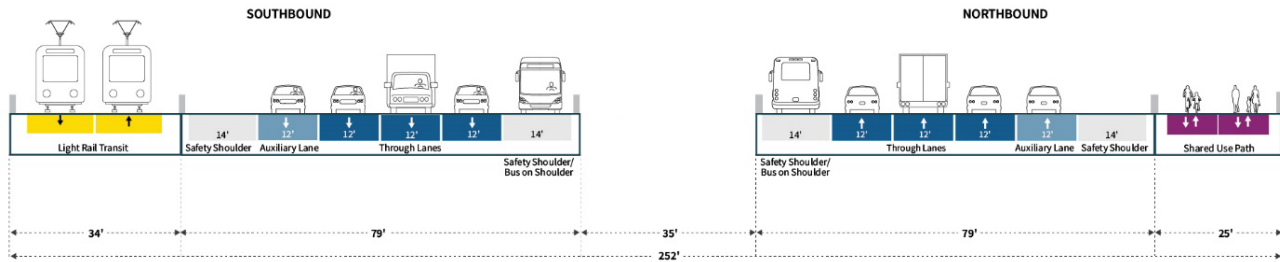
Interstate Bridge Replacement Program

Figure B-4. Columbia River Bridges (Subarea B)



I-5 = Interstate 5; LRT = light-rail transit; NB = northbound; P&R = park and ride; SB = southbound; TBD = to be determined

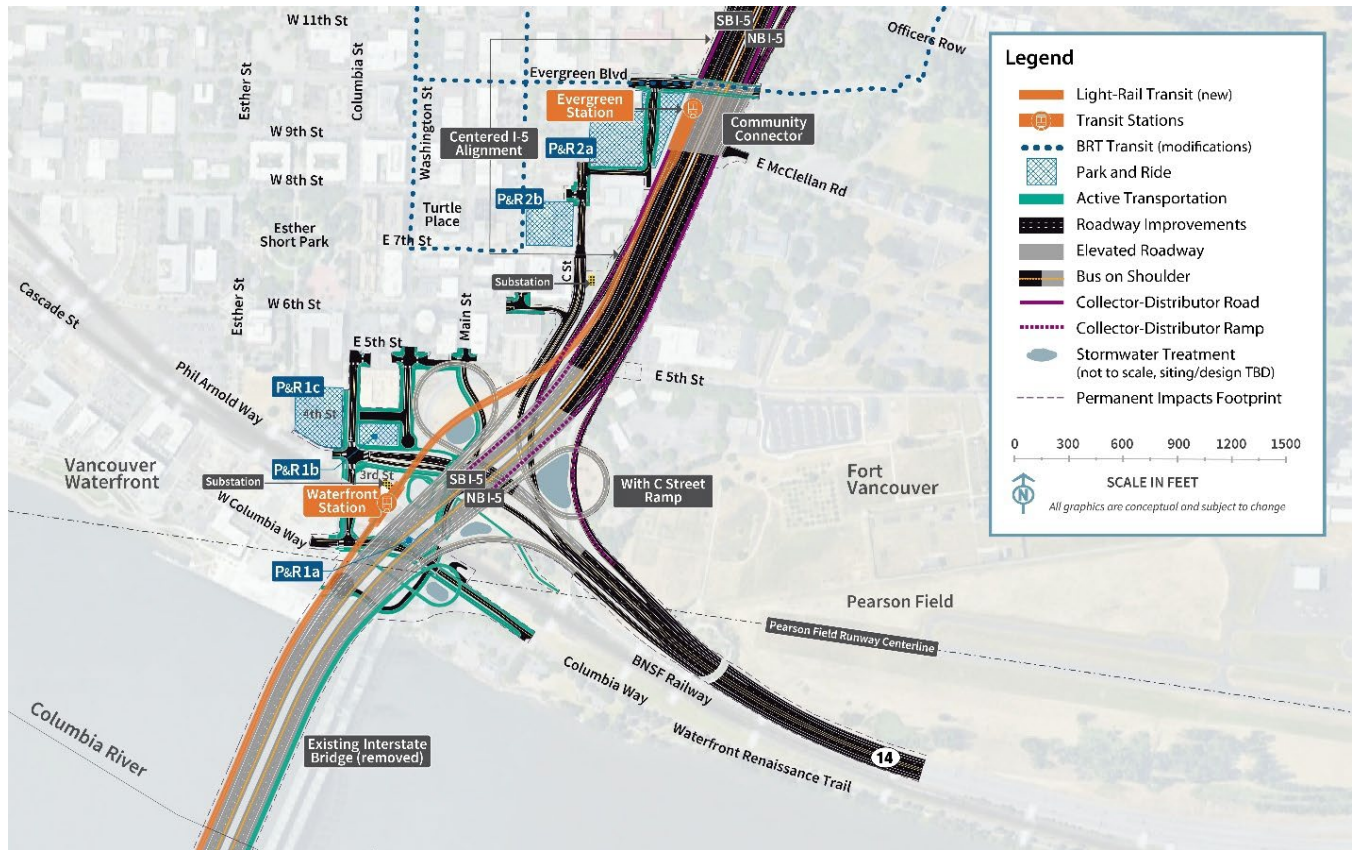
Figure B-5. Typical Cross Section of the Single-Level Fixed-Span Configuration



Notes: Design is not final and subject to change. Widths may vary with final design. The distance between the two bridges could be reduced to 10 feet.

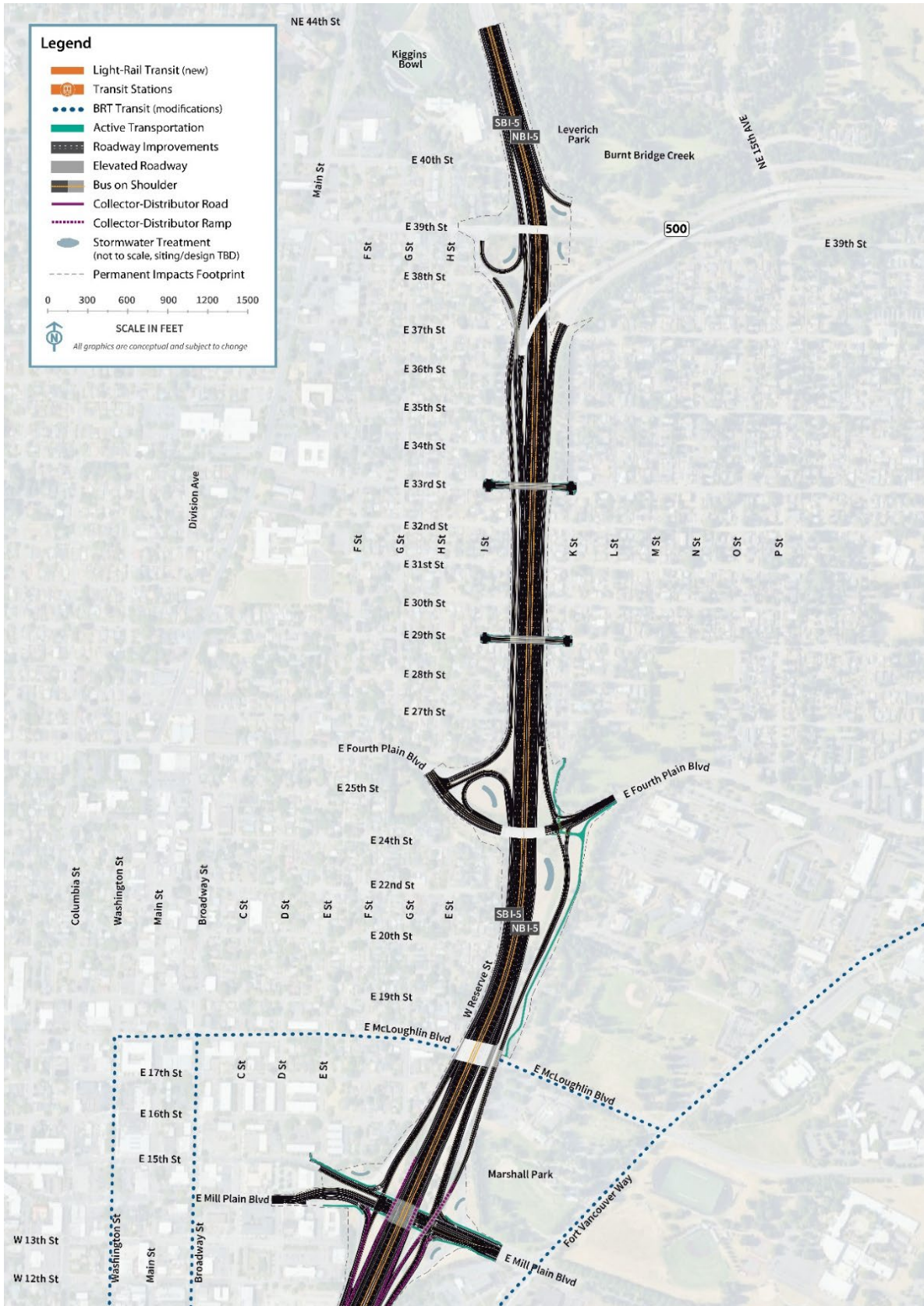
Interstate Bridge Replacement Program

Figure B-6. Downtown Vancouver (Subarea C)



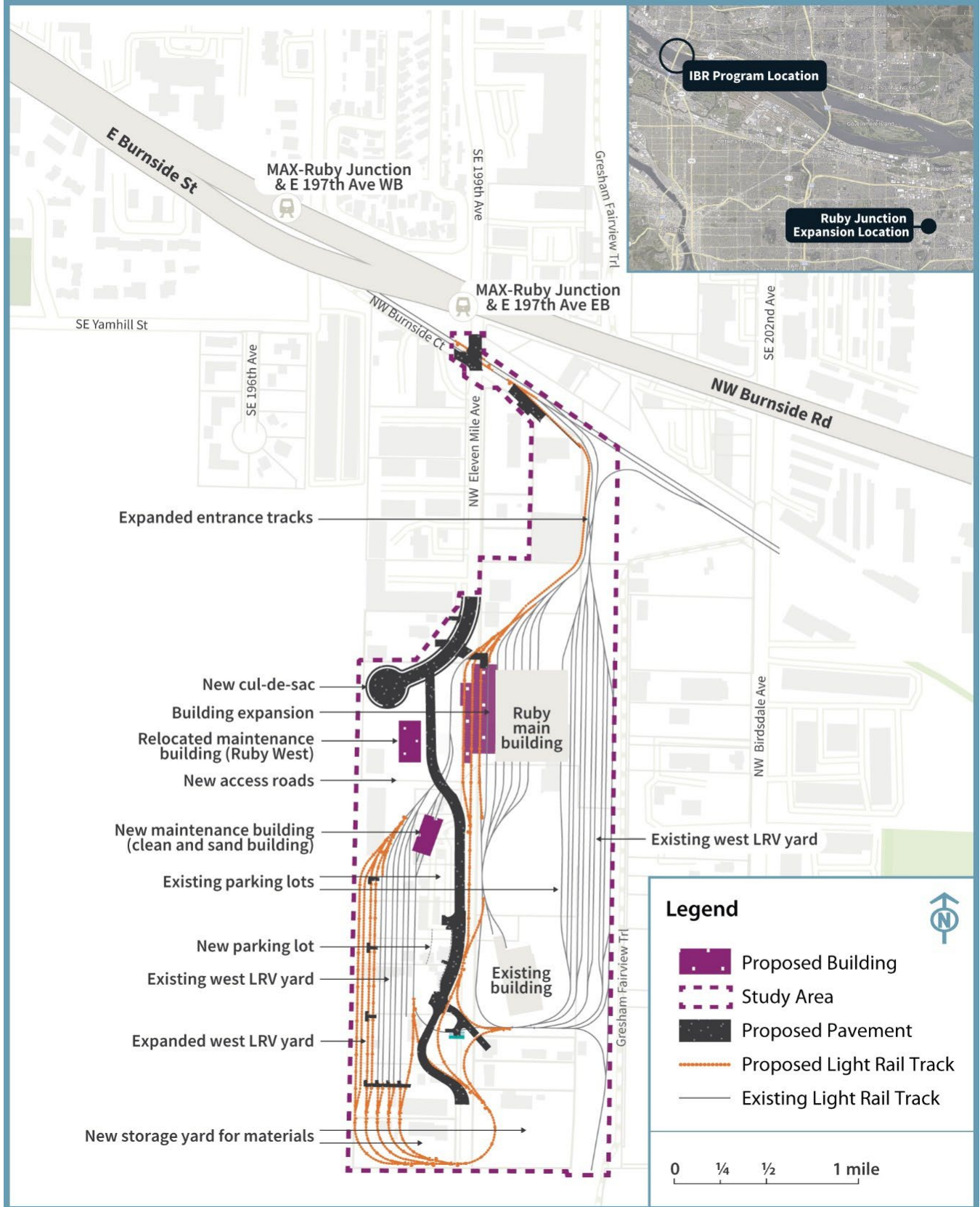
BRT = bus rapid transit; I-5 = Interstate 5; LRT = light-rail transit; NB = northbound; P&R = park and ride; SB = southbound; TBD = to be determined

Figure B-7. Upper Vancouver (Subarea D)



BRT = bus rapid transit; I-5 = Interstate 5; LRT = light-rail transit; NB = northbound; P&R = park and ride; SB = southbound; TBD = to be determined

Figure B-8. Ruby Junction Light-Rail Operations and Maintenance Facility



EB = eastbound; LRV = light-rail vehicle; WB = westbound